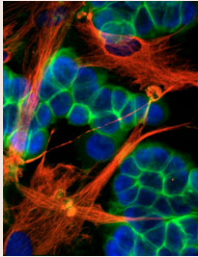


# Journal of Cell Science

Volume 120 (3) 2007



**Cover:** Co-immunofluorescence staining of human pancreatic stellate cells co-cultured with the pancreatic cancer cell line SW850 using anti-vimentin (red) and anti-basigin [extracellular matrix metalloproteinase inducer (EMMPRIN), CD147] (green) antibodies. Nuclei were counterstained with DAPI (blue). See article by W. Schneiderhan et al. (pp. 512-519).

[jcs.biologists.org](http://jcs.biologists.org)

## Research Articles

- 395 **Role of EGF-induced tyrosine phosphorylation of reggie-1/flotillin-2 in cell spreading and signaling to the actin cytoskeleton.** Neumann-Giesen, C., Fernow, I., Amaddii, M. and Tikkanen, R.
- 407 **Inhibition of de novo ceramide synthesis upregulates phospholipase D and enhances myogenic differentiation.** Mebarek, S., Komati, H., Naro, F., Zeiller, C., Alvisi, M., Lagarde, M., Prigent, A.-F. and Némoz, G.
- 417 **Switch from BAX-dependent to BAX-independent germ cell loss during the development of fetal mouse ovaries.** Alton, M. and Taketo, T.
- 425 **After fertilization of sea urchin eggs, eIF4G is post-translationally modified and associated with the cap-binding protein eIF4E.** Oulhen, N., Salaün, P., Cosson, B., Cormier, P. and Morales, J.
- 435 **Phosphorylation of Spc110p by Cdc28p-Clb5p kinase contributes to correct spindle morphogenesis in *S. cerevisiae*.** Huisman, S. M., Smeets, M. F. M. A. and Segal, M.
- 447 **Misassembled mutant  $\Delta F508$  CFTR in the distal secretory pathway alters cellular lipid trafficking.** Gentzsch, M., Choudhury, A., Chang, X., Pagano, R. E. and Riordan, J. R.
- 456 **Filamin links cell shape and cytoskeletal structure to Rho regulation by controlling accumulation of p190RhoGAP in lipid rafts.** Mammoto, A., Huang, S. and Ingber, D. E.
- 468 **Wnt/ $\beta$ -catenin mediates radiation resistance of Sca1<sup>+</sup> progenitors in an immortalized mammary gland cell line.** Chen, M. S., Woodward, W. A., Behbod, F., Peddibhotla, S., Alfaro, M. P., Buchholz, T. A. and Rosen, J. M.
- 478 **Functional genomics in *Trypanosoma brucei* identifies evolutionarily conserved components of motile flagella.** Baron, D. M., Ralston, K. S., Kabututu, Z. P. and Hill, K. L.
- 492 **Nitric oxide promotes endothelial cell survival signaling through S-nitrosylation and activation of dynamin-2.** Kang-Decker, N., Cao, S., Chatterjee, S., Yao, J., Egan, L. J., Semela, D., Mukhopadhyay, D. and Shah, V.
- 502 **Reciprocal regulation of Rac1 and Rho1 in *Drosophila* circulating immune surveillance cells.** Williams, M. J., Habayeb, M. S. and Hultmark, D.
- 512 **Pancreatic stellate cells are an important source of MMP-2 in human pancreatic cancer and accelerate tumor progression in a murine xenograft model and CAM assay.** Schneiderhan, W., Diaz, F., Fundel, M., Zhou, S., Siech, M., Hasel, C., Möller, P., Gschwend, J. E., Seufferlein, T., Gress, T., Adler, G. and Bachem, M. G.
- 520 **Lamin B receptor plays a role in stimulating nuclear envelope production and targeting membrane vesicles to chromatin during nuclear envelope assembly through direct interaction with importin  $\beta$ .** Ma, Y., Cai, S., Lv, Q., Jiang, Q., Zhang, Q., Sodmergen, Zhai, Z. and Zhang, C.

## Cell Science at a Glance

367 **Chromosome cohesion in mitosis and meiosis.** Ishiguro, K. and Watanabe, Y.

## Commentaries

- 371 **MDMX: from bench to bedside.** Marine, J.-C. W., Dyer, M. A. and Jochemsen, A. G.
- 379 **Metabolic catastrophe as a means to cancer cell death.** Jin, S., DiPaola, R. S., Mathew, R. and White, E.
- 385 **Wnt signalling: variety at the core.** Hoppler, S. and Kavanagh, C. L.