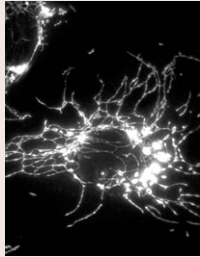


Journal of Cell Science

Volume 120 (5) 2007



Cover: Mitochondrial network in a HeLa cell lacking the protein DRP1, which is involved in organellar fission. Cells were labelled with mitochondrial-matrix-targeted GFP. The network has large abnormal budding areas and long tubules with poor ramification. This unusual shape is associated with changes in organellar membrane properties and dysfunction of oxidative phosphorylation. See article by G. Benard et al. (pp. 838-848).

jcs.biologists.org

Research Articles

- 737 **LAP2 α -binding protein LINT-25 is a novel chromatin-associated protein involved in cell cycle exit.** Naetar, N., Hutter, S., Dorner, D., Dechat, T., Korbei, B., Gotzmann, J., Beug, H. and Foisner, R.
- 748 **Tau impacts on growth-factor-stimulated actin remodeling.** Sharma, V. M., Litersky, J. M., Bhaskar, K. and Lee, G.
- 758 **Suprabasal Dsg2 expression in transgenic mouse skin confers a hyperproliferative and apoptosis-resistant phenotype to keratinocytes.** Brennan, D., Hu, Y., Joubert, S., Choi, Y. W., Whitaker-Menezes, D., O'Brien, T., Uitto, J., Rodeck, U. and Mahoney, M. G.
- 772 **Caspase-1-dependent processing of pro-interleukin-1 β is cytosolic and precedes cell death.** Brough, D. and Rothwell, N. J.
- 782 **Altered dynamics of the lysosomal receptor for chaperone-mediated autophagy with age.** Kiffin, R., Kaushik, S., Zeng, M., Bandyopadhyay, U., Zhang, C., Massey, A. C., Martinez-Vicente, M. and Cuervo, A. M.
- 792 **PI-3-kinase-dependent membrane recruitment of centaurin- α_2 is essential for its effect on ARF6-mediated actin cytoskeleton reorganisation.** Venkateswarlu, K., Bandom, K. G. and Yun, H.
- 802 **EHD1 regulates β 1 integrin endosomal transport: effects on focal adhesions, cell spreading and migration.** Jović, M., Naslavsky, N., Rapaport, D., Horowitz, M. and Caplan, S.
- 815 **Wound-induced ATP release and EGF receptor activation in epithelial cells.** Yin, J., Xu, K., Zhang, J., Kumar, A. and Yu, F.-S. X.
- 826 **A large complex containing Patched and Smoothed initiates Hedgehog signaling in *Drosophila*.** Walthall, S. L., Moses, M. and Horabin, J. I.
- 838 **Mitochondrial bioenergetics and structural network organization.** Benard, G., Bellance, N., James, D., Parrone, P., Fernandez, H., Letellier, T. and Rossignol, R.
- 849 **Dual effects of the membrane-anchored MMP regulator RECK on chondrogenic differentiation of ATDC5 cells.** Kondo, S., Shukunami, C., Morioka, Y., Matsumoto, N., Takahashi, R., Oh, J., Atsumi, T., Umezawa, A., Kudo, A., Kitayama, H., Hiraki, Y. and Noda, M.
- 858 **The lissencephaly protein Lis1 is present in motile mammalian cilia and requires outer arm dynein for targeting to *Chlamydomonas* flagella.** Pedersen, L. B., Rompolas, P., Christensen, S. T., Rosenbaum, J. L. and King, S. M.
- 868 **Agrin and laminin induce acetylcholine receptor clustering by convergent, Rho GTPase-dependent signaling pathways.** Weston, C. A., Teressa, G., Weeks, B. S. and Prives, J.
- 876 **Sheet migration by wounded monolayers as an emergent property of single-cell dynamics.** Bindschadler, M. and McGrath, J. L.
- 885 **Stimulation of ES-cell-derived cardiomyogenesis and neonatal cardiac cell proliferation by reactive oxygen species and NADPH oxidase.** Buggisch, M., Ateghang, B., Ruhe, C., Strobel, C., Lange, S., Wartenberg, M. and Sauer, H.
- 895 **Survivin mediates the anti-apoptotic effect of δ -opioid receptor stimulation in cardiomyocytes.** Yao, L.-L., Wang, Y.-G., Cai, W.-J., Yao, T. and Zhu, Y.-C.
- 908 **Erv14 family cargo receptors are necessary for ER exit during sporulation in *Saccharomyces cerevisiae*.** Nakanishi, H., Suda, Y. and Neiman, A. M.

Hypothesis

- 713 **WRN at telomeres: implications for aging and cancer.** Multani, A. S. and Chang, S.

Commentary

- 723 **T-cell-receptor-dependent actin regulatory mechanisms.** Huang, Y. and Burkhardt, J. K.

Short Report

- 731 **Meiotic interference among MLH1 foci requires neither an intact axial element structure nor full synapsis.** de Boer, E., Dietrich, A. J. J., Höög, C., Stam, P. and Heyting, C.

Author Corrections

- 917 **Role for WNT16B in human epidermal keratinocyte proliferation and differentiation.** Teh, M.-T., Blaydon, D., Ghali, L. R., Briggs, V., Edmunds, S., Pantazi, E., Barnes, M. R., Leigh, I. M., Kelsell, D. P. and Philpott, M. P.
- 918 **The intraflagellar transport component IFT88/polaris is a centrosomal protein regulating G1-S transition in non-ciliated cells.** Robert, A., Margall-Ducos, G., Guidotti, J.-E., Brégerie, O., Celati, C., Bréchet, C. and Desdouets, C.