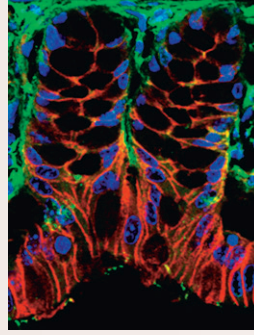


Journal of  
**Cell Science**  
 jcs.biologists.org

Volume 122 (6) March 15, 2009



**Cover:** In vivo regulation of Ras stability by Wnt/ $\beta$ -catenin signaling in the mouse colon. A cryosection of mouse colon tissue was stained by anti- $\beta$ -catenin (red) and anti-Pan-Ras (green) antibodies. Nuclei were stained by DAPI (blue). Fluorescent signals were observed and captured with a confocal microscope. See article by S.-E. Kim et al. (pp. 842-848).

- JCS Prize**
- 747 **2008 Winner: Jennifer Levy. Watt, F.**
- Cell Science at a Glance**
- 749 **Lipid droplets at a glance.** Guo, Y., Cordes, K. R., Farese, R. V., Jr and Walther, T. C.
- Commentary**
- 753 **Live-cell microscopy – tips and tools.** Frigault, M. M., Lacoste, J., Swift, J. L. and Brown, C. M.
- Short Reports**
- 769 **A product of the bicistronic *Drosophila melanogaster* gene *CG31241*, which also encodes a trimethylguanosine synthase, plays a role in telomere protection.** Komonyi, O., Schauer, T., Papai, G., Deak, P. and Boros, I. M.
- 775 **SUMOylation regulates Kv2.1 and modulates pancreatic  $\beta$ -cell excitability.** Dai, X.-Q., Kolic, J., Marchi, P., Sipione, S. and MacDonald, P. E.
- 780 **Assembly of nuclear pore complexes mediated by major vault protein.** Vollmar, F., Hacker, C., Zahedi, R.-P., Sickmann, A., Ewald, A., Scheer, U. and Dabauvalle, M.-C.
- Research Articles**
- 787 **Memo is a cofilin-interacting protein that influences PLC $\gamma$ 1 and cofilin activities, and is essential for maintaining directionality during ErbB2-induced tumor-cell migration.** Meira, M., Masson, R., Stagljar, I., Lienhard, S., Maurer, F., Boulay, A. and Hynes, N. E.
- 798  **$\beta$ PIX-activated Rac1 stimulates the activation of phospholipase D, which is associated with exocytosis in neuroendocrine cells.** Momboisse, F., Lonchamp, E., Calco, V., Ceridono, M., Vitale, N., Bader, M.-F. and Gasman, S.
- 807 **The BTB-MATH protein BATH-42 interacts with RIC-3 to regulate maturation of nicotinic acetylcholine receptors.** Shteingauz, A., Cohen, E., Biala, Y. and Treinin, M.
- 813 **Determinants of aquaporin-4 assembly in orthogonal arrays revealed by live-cell single-molecule fluorescence imaging.** Crane, J. M. and Verkman, A. S.
- 822 **Expression of ceramide glucosyltransferases, which are essential for glycosphingolipid synthesis, is only required in a small subset of *C. elegans* cells.** Marza, E., Simonsen, K. T., Færgeman, N. J. and Lesa, G. M.
- 834 **A novel function for the atypical small G protein Rab-like 5 in the assembly of the trypanosome flagellum.** Adhiambo, C., Blisnick, T., Toutirais, G., Delannoy, E. and Bastin, P.
- 842 **H-Ras is degraded by Wnt/ $\beta$ -catenin signaling via  $\beta$ -TrCP-mediated polyubiquitylation.** Kim, S.-E., Yoon, J.-Y., Jeong, W.-J., Jeon, S.-H., Park, Y., Yoon, J.-B., Park, Y. N., Kim, H. and Choi, K.-Y.
- 849 **A novel role for SED1 (MFG-E8) in maintaining the integrity of the epididymal epithelium.** Raymond, A. S. and Shur, B. D.
- 859 **Flagellar membrane localization via association with lipid rafts.** Tyler, K. M., Fridberg, A., Toriello, K. M., Olson, C. L., Cieslak, J. A., Hazlett, T. L. and Engman, D. M.
- 867 **Identification of a palmitoyl acyltransferase required for protein sorting to the flagellar membrane.** Emmer, B. T., Souther, C., Toriello, K. M., Olson, C. L., Epting, C. L. and Engman, D. M.
- 875 **Huntingtin promotes cell survival by preventing Pak2 cleavage.** Luo, S. and Rubinsztein, D. C.