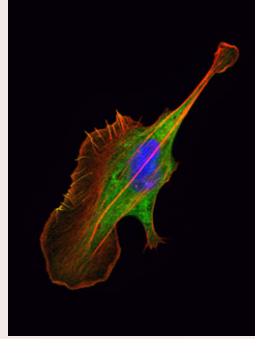


Journal of
Cell Science
 jcs.biologists.org

Volume 124 (19) October 1, 2011



Cover: Actin rocks. Image shows a guitar-shaped B16-F1 melanoma cell crawling on laminin and expressing GFP-fascin, that has been fixed and counterstained for actin filaments (red) using Rhodamine-labelled phalloidin and for the nucleus (blue) using TO-PRO-3. Note fascin accumulation in microspikes and filopodia that protrude on the left. See article by D. Breitsprecher et al. (pp. 3305-3318).

Commentaries

- 3189 **Overcoming anoikis – pathways to anchorage-independent growth in cancer.** Guadamillas, M. C., Cerezo, A. and del Pozo, M. A.
- 3199 **The regulation of abscission by multi-protein complexes.** Neto, H. and Gould, G. W.

Research Articles

- 3209 **ERBIN is a new SARA-interacting protein: competition between SARA and SMAD2 and SMAD3 for binding to ERBIN.** Sflomos, G., Kostaras, E., Panopoulou, E., Pappas, N., Kyrkou, A., Politou, A. S., Fotsis, T. and Murphy, C.
- 3223 **Very-long-chain fatty acids are required for cell plate formation during cytokinesis in *Arabidopsis thaliana*.** Bach, L., Gissot, L., Marion, J., Tellier, F., Moreau, P., Satiat-Jeunemaître, B., Palauqui, J.-C., Napier, J. A. and Faure, J.-D.
- 3235 **TRB3 interacts with SMAD3 promoting tumor cell migration and invasion.** Hua, F., Mu, R., Liu, J., Xue, J., Wang, Z., Lin, H., Yang, H., Chen, X. and Hu, Z.
- 3247 **Adipophilin regulates maturation of cytoplasmic lipid droplets and alveolae in differentiating mammary glands.** Russell, T. D., Schaack, J., Orlicky, D. J., Palmer, C., Chang, B. H., Chan, L. and McManaman, J. L.
- 3254 **Role of Template Activating Factor-I as a chaperone in linker histone dynamics.** Kato, K., Okuwaki, M. and Nagata, K.
- 3266 ***Drosophila* Swiprosin-1/EFHD2 accumulates at the prefusion complex stage during *Drosophila* myoblast fusion.** Hornbruch-Freitag, C., Griemert, B., Buttgereit, D. and Renkawitz-Pohl, R.
- 3279 **Polysialic acid controls NCAM signals at cell–cell contacts to regulate focal adhesion independent from FGF receptor activity.** Eggers, K., Werneburg, S., Schertzinger, A., Abeln, M., Schiff, M., Scharenberg, M. A., Burkhardt, H., Mühlenhoff, M. and Hildebrandt, H.
- 3292 **WDR36 acts as a scaffold protein tethering a G-protein-coupled receptor, Gαq and phospholipase Cβ in a signalling complex.** Cartier, A., Parent, A., Labrecque, P., Laroche, G. and Parent, J.-L.
- 3305 **Cofilin cooperates with fascin to disassemble filopodial actin filaments.** Breitsprecher, D., Koestler, S. A., Chizhov, I., Nemethova, M., Mueller, J., Goode, B. L., Small, J. V., Rottner, K. and Faix, J.
- 3319 **Mutations associated with Charcot–Marie–Tooth disease cause SIMPLE protein mislocalization and degradation by the proteasome and aggresome–autophagy pathways.** Lee, S. M., Olzmann, J. A., Chin, L.-S. and Li, L.
- 3332 **Changes in BiP availability reveal hypersensitivity to acute endoplasmic reticulum stress in cells expressing mutant huntingtin.** Lajoie, P. and Snapp, E. L.
- 3344 **Nuclear relocalisation of cytoplasmic poly(A)-binding proteins PABP1 and PABP4 in response to UV irradiation reveals mRNA-dependent export of metazoan PABPs.** Burgess, H. M., Richardson, W. A., Anderson, R. C., Salaun, C., Graham, S. V. and Gray, N. K.
- 3356 **The *POF1B* candidate gene for premature ovarian failure regulates epithelial polarity.** Padovano, V., Lucibello, I., Alari, V., Della Mina, P., Crespi, A., Ferrari, I., Recagni, M., Lattuada, D., Righi, M., Toniolo, D., Villa, A. and Pietrini, G.
- 3369 **Influence of matrix metalloproteinase MMP-9 on dendritic spine morphology.** Michaluk, P., Wawrzyniak, M., Alot, P., Szczot, M., Wyrembek, P., Mercik, K., Medvedev, N., Wilczek, E., De Roo, M., Zuschratter, W., Muller, D., Wilczynski, G. M., Mozrzyk, J. W., Stewart, M. G., Kaczmarek, L. and Wlodarczyk, J.