

- HERRICK, C. J., 1908. *J. comp. Neurol.*, **18**, 409.
 — 1944. *Ibid.*, **81**, 307.
 HOLMES, W., 1943. *Anat. Rec.*, **86**, 157.
 JOHNSTON, J. B., 1902. *J. comp. Neurol.*, **12**, 1.
 — 1905. *Morph. Jahrb.*, **34**, 149.
 — 1910. *Anat. Anz.*, **37**, 153 and 382.
 KAPPERS, C. U. A., HUBER, G. C., and CROSBY, E., 1935. *Comparative Anatomy of Nervous System of Vertebrates*. New York (Macmillan).
 KOLMER, W., 1905. *Anat. Hefte*, **29**, 165.
 KUPFFER, C., 1890. *Arch. mikr. Anat.*, **35**, 469.
 — 1894. *Studien zur vergleichenden Entwicklungsgeschichte des Kopfes der Kranioten*, 2 Heft. Munich and Leipzig (Lehmann).
 — 1906. *Handbuch der vergleich. u. exper. Entwicklungslehre der Wirbeltiere*, O. Hertwig. Band 2, Teil 3, p. 23. Jena (G. Fischer).
 LANG, A. G., 1937. *Stain Technology*, **12**, 113.
 LARSELL, O., 1947. *J. comp. Neurol.*, **86**, 395.
 NEAL, H. V., 1897. *Anat. Anz.*, **13**, 441.
 — 1914. *J. Morph.*, **25**, 1.
 NONIDIZ, J. F., 1939. *Amer. J. Anat.*, **65**, 361.
 PEARSON, A. A., 1936. *J. comp. Neurol.*, **65**, 201.
 POLYAK, S. L., 1941. *The Retina*. Chicago (University Press).
 SAGEMEHL, M., 1882. Dissertation, Dorpat.
 SHIPLEY, A. E., 1887. *Quart. J. micr. Sci.*, **27**, 173.
 SMITH, J. E., 1946. *Phil. Trans. Roy. Soc.*, **232**, 279.
 STEFANELLI, A., and CAMPOSANO, A., 1946. *Pubbl. Staz. Napoli*, **20**, 19.
 STUDNICKA, F. K., 1895. *Sitzungsb. Ges. wiss. Prag*, **51**.
 TRETJAKOFF, D., 1909. *Arch. mikr. Anat.*, **73**, 607.
 — 1909. *Ibid.*, **74**, 636.
 — 1927. *Z. wiss. Zool.*, **129**, 359.
 WALLS, G. L., 1942. *The Vertebrate Eye and its Adaptive Radiation*. Michigan (Cranbrook Inst. of Science).
 WINTREBERT, P., 1921. *Arch. zool. exp. et gén.*, **60**, 221.
 WOODBURNE, R. T., 1936. *J. comp. Neurol.*, **65**, 403.
 YOUNGSTROM, K. A., 1940. *Ibid.*, **73**, 139.

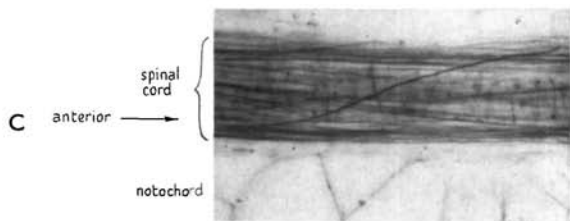
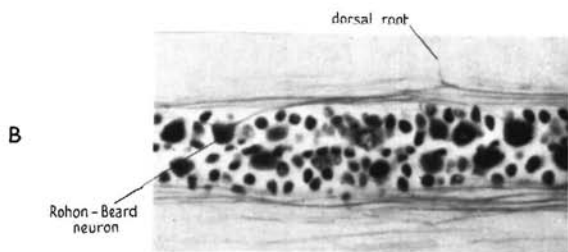
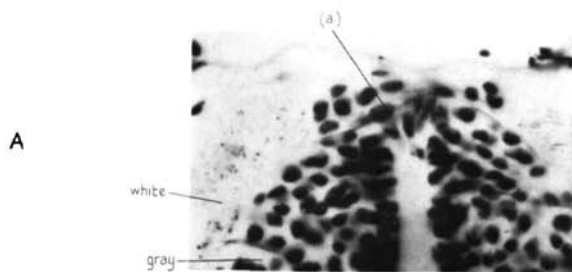
DESCRIPTION OF PLATES

PLATE I

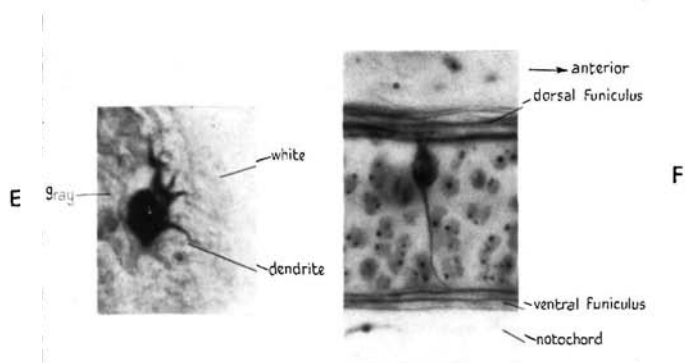
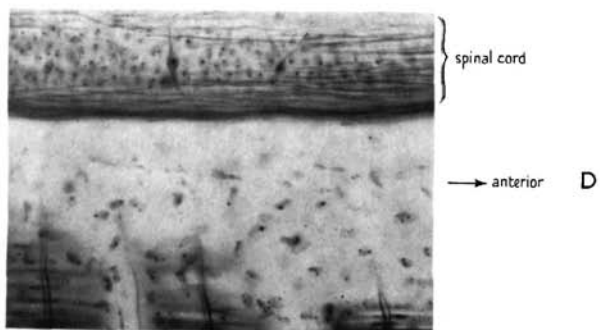
- A. Transverse section showing the Commissura Infima Halleri. $\times 1150$.
 (a) One of the cells of the Commissure.
 B. Horizontal section showing several Rohon-Beard neurons with longitudinal and peripheral processes. $\times 400$. Compare Text-figs. 1 and 2.
 C. Parasagittal section showing oblique fibre in the lateral part of its course. $\times 370$.

PLATE II

- D. Parasagittal section showing relation of large internuncial cells to the segmental motor nerves and to the intersegmental sensory nerves. $\times 370$. Compare Text-fig. 8.
 E. Transverse section, 34μ , showing motor neuron stained with methylene blue. $\times 1700$. Compare Text-fig. 12.
 F. Parasagittal section showing a large internuncial cell. $\times 740$.



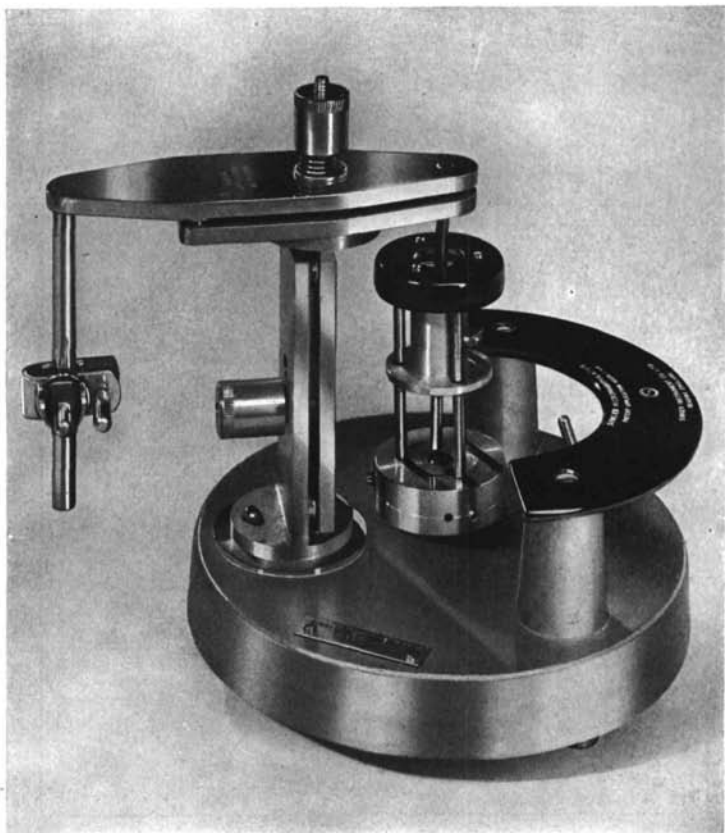
WHITING—PLATE I



WHITING—PLATE II

SINGER MICROMANIPULATOR

(patent application 11559/48)



Designed by the Singer Instrument Company Limited in collaboration with
Dr. Robert Barer of the Department of Human Anatomy, University of Oxford

SINGER INSTRUMENT COMPANY LIMITED
FOUNTAIN COURT, 83 LONDON STREET
READING, BERKSHIRE, ENGLAND

[1 end]

JOURNAL OF THE
Marine Biological Association
OF THE UNITED KINGDOM

VOLUME XXVII, No. 2

APRIL 1948

CONTENTS

- L. H. N. Cooper.** The distribution of iron in the waters of the western English Channel. Some chemical considerations on the distribution of iron in the sea. Particulate ammonia in sea water. Phosphate and fisheries.
- H. W. Harvey.** The estimation of phosphate and of total phosphorus in sea waters.
- S. M. Marshall and A. P. Orr.** Further experiments on the fertilization of a sea loch (Loch Craigin). The effect of different plant nutrients on the phytoplankton.
- N. J. Berrill.** Structure, tadpole and bud formation in the Ascidian *Archidistoma*. The development, morphology and budding of the Ascidian *Diazona*.
- N. S. Jones.** The ecology of the amphipoda of the south of the Isle of Man.
- Yogendra R. Tripathi.** A new species of ciliate, *Trichodina branchicola*, from some fishes at Plymouth.
- K. A. Pyefinch.** Methods of identification of the larvae of *Balanus balanoides* (L), *B. crenatus* Brug. and *Verruca stroemia* O. F. Müller. Notes on the biology of cirripedes.
- George Frederick Humphrey.** The effect of narcotics on the endogenous respiration and succinate oxidation in oyster muscle.
- Abstracts of Memoirs.**

The Council of the Marine Biological Association wish it to be understood that they do not accept responsibility for statements published in the *Journal* excepting when those statements are contained in an official report of the Council.

Price Twenty-five Shillings net post free

CAMBRIDGE UNIVERSITY PRESS
BENTLEY HOUSE, 200 EUSTON ROAD, N.W. 1

The Journal of
Experimental Biology

Edited by J. GRAY

¶ The official medium for the publications of the Society for Experimental Biology, including articles on experimental biology and comparative physiology, whether zoological or botanical.

¶ The Society is affiliated to the Biological Council and the Journal is included in the Council's 'Contents Lists' service.

¶ The subscription rate is £3. 3s. net per volume. Single numbers cost £1. 1s. net, double numbers £2. 2s. net each.

¶ The current issue is Volume 25, No. 3, September 1948.

CAMBRIDGE UNIVERSITY PRESS
Bentley House, 200 Euston Road, London, N.W. 1

The Journal of
General Microbiology

EDITORS: DR B. C. J. G. KNIGHT & DR A. A. MILES

OBJECTS: To promote the study of bacteria, microfungi, microscopic algae, protozoa and viruses.

POLICY: To publish the results of research in general microbiology and in specialized fields for the benefit of all workers in microbiology—agricultural, industrial, medical, veterinary, &c.

EDITORIAL BOARD: Dr G. C. Ainsworth, Professor W. B. Brierley, Dr T. Gibson, Dr A. T. R. Mattick, Dr Kenneth Smith, Dr A. W. Stablesforth, Dr D. D. Woods.

SUBSCRIPTION: 50s. net per volume. Single parts may be purchased for 20s. plus postage. Each volume will consist at first of 3 parts. The next issue will be Vol. III, No. 1.

published for the
SOCIETY FOR GENERAL MICROBIOLOGY
by the
CAMBRIDGE UNIVERSITY PRESS

A few

MICHROME BRAND

STAINS & REAGENTS

FOR MICROSCOPY

Acridine Orange
 Acridine Red
 Adonitol
 Alizarin Red
 Alkali Blue
 Aniline Blue-Orange G
 Arabinose
 Auramine, O
 Azo Carmine, B & G
 Azo Eosin
 Azo Fuchsin
 Azur 1, 2, A, B, C, & L
 Azur 2 Eosin
 Bromocresol Green
 Bromocresol Purple
 Bromphenol Red
 B.Z.L. Blue
 Canada Balsam
 Carbol Fuchsin
 Carmine Acid
 Cedarwood Oil
 Celloidin
 Chlorazol Black
 Corollin
 Crystal Violet
 Dahlia
 Dextrose
 Dimethyl Yellow
 Dioxan
 D.P.X. Mountant
 Dulcitol
 Eosin
 Eosin, Azur
 Erythrosin
 Evans Blue (Genuine)
 Evans Blue (Substitute)
 Fast Green, F.C.F.
 Field's Stain
 Formalin
 Fuchsin

Gallamine Blue
 Giemsa Stain
 Gold Chloride
 Haematein
 Haematoxylin
 Indian Ink, Micro
 Indigo Carmine
 Inulin
 Isamine (Pyrrol) Blue
 Janus Black
 Janus Blue
 Janus Brown
 Janus Green, B
 Janus Red
 Janus Yellow
 Jenner Stain
 Lactose, Bact.
 Leishman Stain
 Magdala Red
 Maltose
 Mannite
 May-Grunwald Stain
 Metachrome Yellow 2RD
 Methyl Green
 Methyl Green-Orange G
 (KARDOS)
 Methyl Green-Pyronin
 Methyl Yellow
 Methylene Blue
 Methylene Blue (Vital)
 Methylene Green
 Methylene Violet (Berthsen)
 Naphthol Green
 Neutral Red
 Nile Blue
 Nuclear Fast Red
 Orange G
 Orcein (Unna)
 Osmic Acid
 Panchrome (Pappenheim)

Paraffin Wax
 Patent Blue
 Peptones
 Phenosafranin
 Polyric Oil
 Ponceau de Xylidine
 Pontamine Sky Blue
 Purpurin
 Pyronin
 Resazurin
 Rose Bengale
 Rosolic Acid
 Ruthenium Red
 Safranin
 Saffron
 Salicin
 Scarlet Red
 Sodium Taurocholate
 Sudan Black
 Sudan Blue
 Sudan Brown
 Sudan, 1, 2, 3, & 4
 Tartazine
 Thiazine Red
 Thioflavin, T
 Thymol Blue
 Thymolphthalein
 Titan Yellow
 Toepfer's Reagent
 Toluidine Blue
 Trypan Blue
 Trypan Red
 Trypsin, bact.
 Vesuvium Brown
 Victorin Blue
 Vital New Red
 Vital Red
 Wright's Blood Stain
 Water Blue
 &c.

**Water-soluble Indicators. Stains in tablets and ampoules
 Slides and Cover Glasses: Laboratory Sundries.**

**For SERVICE, UNIFORM HIGH QUALITY, RELIABILITY
 and for IMMEDIATE DELIVERY Stipulate**

MICHROME BRAND

Prepared only by

EDWARD GURR, LTD.

108 Waterford Rd., Walham Green, LONDON, S.W.6

Price List and Literature on application

Telephone : Renown 2011

Cables : Gurr, Renown 2011 London

STAINS & REAGENTS FOR MICROSCOPY

MICHROME BRAND

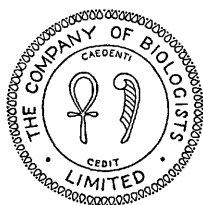
Quarterly Journal of Microscopical Science

JOINT EDITORS

C. F. A. PANTIN, Sc.D., F.R.S.

JOHN R. BAKER, D.Sc.

VOLUME 89. Third Series



Published for the Company of Biologists Limited

OXFORD: AT THE CLARENDON PRESS

LONDON: GEOFFREY CUMBERLEGE

1948

CONTENTS

Contents of Volume 89, Part 1

	<i>Page</i>
J. A. C. Nicol. The Giant Nerve-fibres in the Central Nervous System of <i>Myxicola</i> (Polychaeta, Sabellidae). With 14 Text-figures and 3 Plates	1
J. Hanson. Transport of Food through the Alimentary Canals of Aquatic Annelids	47
I. Chester Jones. Variation in the Mouse Adrenal Cortex with Special Reference to the Zona Reticularis and to Brown Degeneration, together with a Discussion of the 'Cell Migration' Theory. With 4 Plates and 6 Text-figures	53
K. S. Chodnik. Cytology of the Glands associated with the Alimentary Tract of Domestic Fowl (<i>Gallus domesticus</i>). With 29 Text-figures	75
A. Brodal and R. G. Harrison. Observations on the Chemical Composition of Myelin and the Smallest Size of Myelinated Nerve-fibres in the Central Nervous System. With 1 Plate	89
J. R. Baker. The Cell-theory: a Restatement, History, and Critique. Part I	103

Contents of Volume 89, Part 2

T. Kerr. The Pituitary in Normal and Parasitized Roach (<i>Leuciscus rutilus</i> Flem.). With 1 Plate	129
Jean Hanson. An Unusual Type of Muscle-fibre. With 2 Text-figures	139
D. Barker. The Innervation of the Muscle-spindle. With 3 Plates and 13 Text-figures	143
P. B. Medawar. The Cultivation of Adult Mammalian Skin Epithelium <i>in vitro</i> . With 5 Text-figures	187
V. B. Wigglesworth. The Structure and Deposition of the Cuticle in the Adult Mealworm, <i>Tenebrio molitor</i> L. (Coleoptera). With 2 Plates and 8 Text-figures	197
R. A. R. Gresson and I. Zlotnik. A Study of the Cytoplasmic Components during the Gametogenesis of <i>Bos taurus</i> . With 1 Plate and 14 Text-figures	219
A. J. Cain. An Easily Controlled Method for Staining Mitochondria	229
J. R. Baker. A New Method for Oblique Microscopical Illumination. With 2 Text-figures	233

Contents of Volume 89, Part 3

	<i>Page</i>
P. B. Medawar. Tests by Tissue Culture Methods on the Nature of Immunity to Transplanted Skin.	239
N. J. Berrill. Budding and the Reproductive Cycle of <i>Distaplia</i>	253
A. D. Lees and J. W. L. Beament. An Egg-waxing Organ in Ticks. With 1 Plate	291
Owen Lewis Thomas. A Study of the Spheroid System of Sympathetic Neurones with Special Reference to the Problem of Neurosecretion. With 2 Plates	333
D. A. Kempson, O. L. Thomas, and J. R. Baker. A Simple Method for Phase-Contrast Microscopy	351

Contents of Volume 89, Part 4

H. P. Whiting. Nervous Structure of the Spinal Cord of the Young Larval Brook-Lamprey. With 2 Plates and 17 Text-figures	359
A. G. Willis. Studies on <i>Lagenophrys tattersalli</i> (Ciliata Peritricha, Vorticellinae)	385
W. Siang Hsu. The Golgi Material and Mitochondria in the Salivary Glands of the Larva of <i>Drosophila melanogaster</i>	401
W. L. Doyle. Phosphatase Activity of <i>Drosophila</i> Salivary Glands	415
A. J. Cain. The Accumulation of Carotenoids in the Golgi Apparatus of Neurones of <i>Helix</i> , <i>Planorbis</i> , and <i>Limnaea</i>	421
A. J. Cain. A Further Note on Nile Blue	429
J. D. Smyth and C. A. Hopkins. Ester Wax as a Medium for Embedding Tissue for the Histological Demonstration of Glycogen	431
C. Overgaard. A Simple Method for Orientating Small Objects for Sectioning, with Special Regard to Nematodes	437
R. Barer and A. E. Saunders-Singer. A Single-control Micromanipulator. With 1 Plate	439

The Quarterly Journal of Microscopical Science

THE SUBSCRIPTION for Vol. 89 is £3. 3s. 0d. for the Four Numbers; for this sum (*prepaid*) the JOURNAL is sent Post Free to any part of the world. Separate numbers and back numbers which remain in print are sold at 21s. net each.

At the CLARENDON PRESS, OXFORD, or
OXFORD UNIVERSITY PRESS, LONDON, E.C. 4

NOTICE TO CONTRIBUTORS

CONTRIBUTIONS TO THE JOURNAL should be addressed to the Editors, Q.J.M.S., and sent to Dr. C. F. A. Pantin, Dept. of Zoology, Downing St., Cambridge. If any preliminary communication on the subject of a paper offered to the Editors has already been published in another journal, a note to this effect must accompany the manuscript.

Manuscripts must be typewritten (double spaced). Typescripts should be fully corrected; an allowance of 10s. per sheet of sixteen pages is made for alterations in proof, contributors being responsible for any excess.

Manuscripts should include a **short** summary. They should be as concise as possible. Papers not exceeding 6,000 words can receive most rapid publication. Extensive introductory and descriptive matter commonly required in theses for University degrees should **not** be included in the manuscript.

Words to be printed in italics should be underlined. Division of the matter into sub-headings must follow a consistent plan and excessive subdivision must be avoided.

Footnotes should not be used.

References should be given in the following style:

Lison, L., 1936. *Histochimie Animale*. Paris (Gauthier-Villars).

Wigglesworth, V. B., 1933. *Quart. J. micr. Sci.*, **76**, 270.

If it is considered desirable to give the titles of papers, they should be placed in inverted commas immediately after the dates of the references.

Illustration should not be redundant. Authors may be asked to provide a grant for excessive illustration. Illustrations (including lettering) should be arranged so that they may be printed as figures of a size appropriate to a page of the journal. The maximum size of a printed figure is $5'' \times 7\frac{1}{2}'' = 13 \text{ cm.} \times 19 \text{ cm.}$

Illustrations should be made about half as large again as the size required in print. Thus a drawing destined to occupy a whole page should be about $7\frac{1}{2}'' \times 11''$ (20 cm. \times 30 cm.), including lettering.

Drawings should be 'line and dot' in black process ink. (The attention of authors is drawn to 'A Method of Illustration for Zoological Papers', by H. G. Cannon, published by the Association of British Zoologists, 1936.)

Photographs should not be given if a line and dot drawing will serve the purpose. Photographic prints should be sharp and with good contrast.

Lithographic and coloured illustrations will **NOT** be published unless the author is prepared to make a grant covering the cost of their production.

Position of Figures and Plates should be clearly indicated by notes written in the margin of the typescript.

The lettering of figures should be written in block capitals on accurately imposed outlines on tracing-paper. Abbreviations should not be used unless absolutely necessary. These remarks apply both to text-figures and to plates. The magnification of a figure is best indicated by a scale at the side of it.

Authors receive 50 copies of their contributions gratis, and may buy additional copies if they apply to the Editors when they return the corrected proof.

Bodies of numerical data too extensive for complete publication should be summarized for discussion, and the originals deposited in the Archives established for this purpose in the British Museum (Natural History).