

MOLECULAR CHARACTERISTICS OF MAMMALIAN AND INSECT AMINO ACID TRANSPORTERS: IMPLICATIONS FOR AMINO ACID HOMEOSTASIS

MICHELA CASTAGNA¹, CHAIRAT SHAYAKUL¹, DAVIDE TROTTI¹, V. FRANCA SACCHI²,
WILLIAM R. HARVEY³ AND MATTHIAS A. HEDIGER^{1,*}

¹Renal Division, Department of Medicine, Brigham and Women's Hospital and Harvard Medical School, and Department of Biological Chemistry and Molecular Pharmacology, Harvard Medical School, Boston, MA, 02115, USA, ²Istituto di Fisiologia Generale e Chimica Biologica, Facoltà di Farmacia, Via Trentacoste 2, 20134 Milano, Italy and ³Department of Biology, Temple University, Philadelphia, PA 19122, USA

Summary

In mammalian cells, the uptake of amino acids is mediated by specialized, energy-dependent and passive transporters with overlapping substrate specificities. Most energy-dependent transporters are coupled either to the cotransport of Na⁺ or Cl⁻ or to the countertransport of K⁺. Passive transporters are either facilitated transporters or channels. As a prelude to the molecular characterization of the different classes of transporters, we have isolated transporter cDNAs by expression-cloning with *Xenopus laevis* oocytes and we have characterized the cloned transporters functionally by uptake studies into oocytes using radiolabelled substrates and by electrophysiology to determine substrate-evoked currents. Mammalian transporters investigated include the dibasic and neutral amino acid transport protein D2/NBAT (system b⁰⁺) and the Na⁺- and K⁺-dependent neuronal and epithelial high-affinity glutamate transporter EAAC1 (system X⁻_{AG}). A detailed characterization of these proteins has provided new information on transport characteristics and mechanisms for coupling to different inorganic ions. This work has furthermore advanced our understanding of the roles these transporters play in amino acid homeostasis and in various pathologies. For example, in the central nervous system, glutamate transporters are critically important in maintaining the extracellular glutamate concentration below neurotoxic levels, and defects of the human D2 gene have been shown to account for the formation of kidney stones in patients with cystinuria.

Using similar approaches, we are investigating the molecular characteristics of K⁺-coupled amino acid transporters in the larval lepidopteran insect midgut. In the larval midgut, K⁺ is actively secreted into the lumen through the concerted action of an apical H⁺ V-ATPase and

an apical K⁺/2H⁺ antiporter, thereby providing the driving force for absorption of amino acids. *In vivo*, the uptake occurs at extremely high pH (pH 10) and is driven by a large potential difference (approximately -200 mV). Studies with brush-border membrane vesicles have shown that there are several transport systems in the larval intestine with distinct amino acid and cation specificities. In addition to K⁺, Na⁺ can also be coupled to amino acid uptake at lower pH, but the Na⁺/K⁺ ratio of the hemolymph is so low that K⁺ is probably the major coupling ion *in vivo*. The neutral amino acid transport system of larval midgut has been studied most extensively. Apart from its cation selectivity, it appears to be related to the amino acid transport system B previously characterized in vertebrate epithelial cells. Both systems have a broad substrate range which excludes 2-(methylamino)-isobutyric acid, an amino acid analog accepted by the mammalian Na⁺-coupled system A. In order to gain insights into the K⁺-coupling mechanism and into amino acid and K⁺ homeostasis in insects, current studies are designed to delineate the molecular characteristics of these insect transporters. Recent data showed that injection of mRNA prepared from the midgut of *Manduca sexta* into *Xenopus laevis* oocytes induced a 1.5- to 2.5-fold stimulation of the Na⁺-dependent uptake of both leucine and phenylalanine (0.2 mmol l⁻¹, pH 8). The molecular cloning of these transporters is now in progress. Knowledge of their unique molecular properties could be exploited in the future to control disease vectors and insect pests.

Key words: Amino acid transport, intestine, kidney, brain, lepidopteran insects, neurotransmitter, glutamate, GABA, cystinuria.

Introduction

Transport of amino acids into and out of cells is an essential part of intra- and extracellular amino acid homeostasis. These solutes play fundamental roles in a multitude of functions, including protein synthesis, hormone metabolism, catalytic

functions, nerve transmission, regulation of cell growth, production of metabolic energy, synthesis of purines and pyrimidines, nitrogen metabolism and biosynthesis of urea. A variety of amino acid transporters with overlapping substrate

*e-mail: mhediger@bustoff.bwh.harvard.edu.

specificities ensure an adequate supply of these important solutes.

In mammalian cells, concentrative accumulation of amino acids can be achieved by coupling the uptake to the cotransport of Na^+ . The required inwardly directed Na^+ electrochemical ion gradient is maintained by the plasma membrane Na^+/K^+ -ATPase. Certain epithelial amino acid transporters have also been reported to be H^+ -coupled (Thwaites *et al.* 1993), by analogy with the intestinal brush-border H^+ -coupled oligopeptide transporter (Fei *et al.* 1994). The required inwardly directed H^+ electrochemical ion gradient is maintained by the concerted action of the basolateral Na^+/K^+ -ATPase and the brush-border Na^+/H^+ exchanger. By contrast, in the midgut of lepidopteran larvae, amino acid transporters are energized by coupling to the cotransport of K^+ . The inwardly directed K^+ electrogenic ion gradient is maintained by the concerted actions of the apical H^+ V-ATPase (Harvey and Wiczorek, 1997) and the apical K^+/H^+ exchanger (Lepier *et al.* 1994).

Concentrative uptake of amino acids is also driven in some cases either by the outwardly directed concentration gradient of other amino acids by exchange mechanisms or simply by the membrane potential. For example, in the kidney proximal tubule S3 segment, the amino acid cystine appears to be absorbed *via* system $\text{b}^{\text{O}+}$ in exchange for intracellular amino acids. The cationic amino acid transport system y^+ mediates the entry of positively charged amino acids down their electrochemical gradient. This system also allows certain neutral amino acids to be transported in a Na^+ -dependent manner, thereby mimicking dibasic amino acids.

The purpose of this review is to summarize our knowledge of the molecular and physiological characteristics of amino acid transporters in mammals and insects. The review is divided into the following sections: (1) classification and physiological relevance of amino acid transport systems; (2) recent insights into the physiology of amino acid transporters based on molecular studies; (3) K^+ -coupled amino acid transporters in insect midgut; and (4) conclusion.

Classification and physiological relevance of amino acid transport systems

Kinetic studies and inhibition experiments of transporters using a variety of preparations led to the identification of distinct amino acid transport systems. In addition to nutrient roles, transporters of acidic amino acids and γ -aminobutyric acid (GABA) play important roles in neurotransmission in the central nervous system (CNS). Other transporters are involved in cellular activation and tumorigenesis (Freidman *et al.* 1994; Singh and Siegal, 1995). Neutral and acidic amino acids are important organic osmolytes in osmotically stressed cells, and regulation of amino acid uptake systems (e.g. systems A or X^-_{AG}) in response to hypertonic stress can contribute to cell volume recovery (Sone *et al.* 1993; Chen and Kempson, 1995; Petronini *et al.* 1992; Chesney, 1985).

The following different systems for the uptake of neutral amino acids appear to be present in epithelial cells: systems A,

ASC, B, B^0 and L (see below). Systems B, B^0 and L are thought to be expressed in apical membranes and to be involved in transepithelial absorption, whereas systems A and ASC are expressed in basolateral membranes, where they absorb amino acids from the blood for the metabolic requirement of enterocytes (Stevens *et al.* 1984; Tate *et al.* 1996). The characteristics of different amino acid transport systems are summarized below.

System A

This system, which mainly transports small aliphatic amino acids, is widely expressed in mammalian cells, including myocytes and hepatocytes. In the intestine, system A is localized to basolateral membranes where it absorbs amino acids from the blood for the metabolic requirement of enterocytes (Stevens *et al.* 1984; Tate *et al.* 1996). System A is Na^+ -coupled, tolerates Li^+ and is pH sensitive (Christensen *et al.* 1965). It recognizes *N*-methyl amino acids, and (*N*-methylamino)- α -isobutyric acid (MeAIB) is a characteristic substrate.

System A is regulated by amino acid deprivation, hormones, growth factors and hyperosmotic stress (Soler *et al.* 1993; Chen and Kempson, 1995). Both glucagon and insulin modulate the expression of system A (Shotwell *et al.* 1983; Kilberg *et al.* 1985). Insulin stimulates system A activity in both liver and skeletal muscle, and glucagon also stimulates it synergistically in hepatocytes (Le Cam and Freychet, 1978; Fehlmann *et al.* 1979; Kelley *et al.* 1980). In addition to being a hormone of glucose deficiency, glucagon plays important roles during periods of protein abundance, facilitating the conversion of amino acids to glucose and stimulating urea nitrogen production (Boden *et al.* 1990). *In vitro* studies on the nutrient-dependence of pancreatic glucagon and insulin release revealed different effects of individual amino acids (Ebert and Creutzfeldt, 1987; Pipeleers *et al.* 1985a,b). For example, alanine stimulates primarily glucagon release, leucine stimulates release of insulin but not glucagon, and arginine (a non-substrate of system A) stimulates the release of both glucagon and insulin. These responses appear to correlate with the different metabolic roles of amino acids in liver and muscle and their involvement in gluconeogenesis and ureagenesis. For example, alanine plays a key role in transamination reactions and in furnishing carbon atoms for hepatic gluconeogenesis.

Glucagon and insulin induce system A (or at least one subtype of this system) by a process that is dependent on protein synthesis (Crettaz *et al.* 1983; Pariza *et al.* 1976; Lin *et al.* 1994; Cariappa and Kilberg, 1992). Micro-injection of mRNA prepared from the liver of 'glucagon-stimulated' rats (intraperitoneally) into *Xenopus laevis* oocytes induced a higher uptake of neutral amino acids than in oocytes injected with mRNA from untreated animals (Palacin *et al.* 1990; Tarnuzzer *et al.* 1990), suggesting that regulation occurs at least in part at the transcriptional level. Stimulation of system A amino acid transport in human skeletal muscle is thought to involve diminished protein degradation (Bonadonna *et al.* 1993).

System ASC

This system provides cells with the essential amino acids alanine and threonine, and the non-essential amino acids serine and cysteine. Cysteine is a precursor for the synthesis of glutathione (GSH), which protects cells against oxidative stress. System ASC is easily distinguishable from system A because (1) it does not recognize MeAIB, and (2) neutral amino acid uptake is relatively pH-insensitive. This transporter also accepts acidic amino acids at reduced extracellular pH (Tate *et al.* 1996; Vadgama and Christensen, 1984; Makowske and Christensen, 1982).

Systems B, B⁰ and B⁰⁺

These closely related Na⁺-dependent systems mediate the absorption of aliphatic, branched-chain and aromatic amino acids. B⁰⁺ also accepts dibasic amino acids (Van Winkle, 1988). Systems B and B⁰ have a broader specificity for neutral amino acids than systems A and ASC. They are present in intestinal and renal epithelial brush-border membranes (Stevens *et al.* 1984, 1992; Maenz and Patience, 1992; Lynch and McGivan, 1987; Doyle and McGivan, 1992).

System B⁰⁺ was first characterized in mouse blastocysts but has also been observed in *Xenopus* oocytes, fibroblasts, porcine endothelial cells and hepatoma cells. It has been proposed that systems B, B⁰ and B⁰⁺ are variations of an evolutionarily ancient transporter (Kilberg *et al.* 1993). Alternatively, these systems may constitute different manifestations of the same transporter. It is not clear at present how these transport systems relate to the epithelial brush-border H⁺-coupled amino acid transporters recently described by Thwaites *et al.* (1993).

System B⁰⁺ is both Na⁺- and Cl⁻-coupled (Van Winkle, 1985b) and may correspond to the β-alanine carrier (Munck and Munck, 1994).

System b⁰⁺

The mouse blastocyst transport system b⁰⁺ mediates Na⁺-independent, high affinity transport of neutral and dibasic amino acids (Van Winkle, 1993). It is expressed in kidney and intestinal epithelia (Stevens *et al.* 1984; Mirchett *et al.* 1982).

System N

This system is Na⁺-coupled and specific for neutral amino acids. It has a more restricted tissue distribution than systems A, ASC, B, B⁰ and B⁰⁺. It is expressed in liver and muscle. In liver, system N is involved in the transport of glutamine, asparagine and histidine and it plays an important role in glutamine metabolism (Kilberg *et al.* 1980).

System GLY

System GLY is specific for glycine and sarcosine and is found in liver, erythrocytes and brain (Eavenson and Christensen, 1967). The functional importance of system GLY in peripheral tissues has not yet been defined. In brain, glycine is an inhibitory neurotransmitter (Kanner, 1989, 1994), and system GLY is expressed in glial cells. This is consistent with the view that system GLY is involved in neurotransmission (see below).

System β

This system is specific for β-amino acids and taurine (Miyamoto *et al.* 1990). Given its high abundance in brain, it is thought to play a role in neurotransmission. It was also reported to be an important osmolyte transporter in kidney (Uchida *et al.* 1992; Yamauchi *et al.* 1992).

The imino system

This system, specific for proline, was described in brush-border membranes of intestinal enterocytes (Stevens and Wright, 1985). The system accounts for 60% of the Na⁺-dependent uptake of proline in brush-border membranes and is specific for imino acids and MeAIB. Most other neutral amino acids are not recognized. At present, it is not clear whether the imino carrier is related to the proline transporters of the type PROT from brain.

System L

Branched-chain and aromatic amino acids that are poorly metabolized in several types of cells are transported by the widespread Na⁺-independent system L. This system has been further subdivided into two subtypes, which appear at different ages in primary cultures of hepatocytes and which have different affinities for amino acids (Weissbach *et al.* 1982). Whether a single transport system phenotypically displays the two affinities remains to be determined. Interestingly, the activity of system L is selectively decreased in B-lymphocytes of patients affected by chronic lymphatic leukemia (Segel *et al.* 1984).

In the brain, system L is the major transport system of the blood-brain barrier and of glial cells (Pardridge and Oldendorf, 1977; Brookes, 1988; Su *et al.* 1995). The bicyclic amino acid 2-aminobicyclo(2,2,1)heptane-2-carboxylic acid (BCH) is a characteristic substrate of system L (Christensen *et al.* 1969).

System X⁻_{AG} and related acidic amino acid transport systems

The electrogenic Na⁺-dependent acidic amino acid transport system X⁻_{AG} has been found in both epithelial cells and neurons (Dall'Asta *et al.* 1983). Studies of glutamate uptake in epithelial cells, neurons and glial cells revealed the existence of several high- and low-affinity, Na⁺- and K⁺-dependent acidic transporters. High-affinity ($K_{0.5}=1-50\mu\text{mol l}^{-1}$) and low-affinity ($K_{0.5}>100\mu\text{mol l}^{-1}$) glutamate transporters were identified in kidney, intestine and brain (Christensen, 1990; Cox *et al.* 1977; Fonnum, 1984; Fukuara and Turner, 1985; Lerner, 1987; Nicholls and Attwell, 1990; Schousboe, 1981; Somohano and Lopez-Colome, 1995; Wingrove and Kimmich, 1988).

In the central nervous system, glutamate plays a particularly important role as an excitatory neurotransmitter. To terminate signal transmission, glutamate is removed from the extracellular fluid in the synaptic cleft surrounding the receptors by specialized uptake systems in neurons and glial cells because there are no enzymatic pathways for transmitter inactivation. In all tissues, glutamate also plays an important role in amino acid metabolism.

System y⁺

Cationic amino acids are taken up by cells *via* system y⁺. This system also accepts some neutral amino acids in the presence of Na⁺, resulting in electrogenic transport. Lysine is an essential amino acid in humans and must therefore be taken up by all cells. Lysine and its derivatives also play important roles in fatty acid oxidation and polyamine synthesis. Arginine uptake is particularly important because it is required for nitric oxide (NO) synthesis (see below).

System x_c⁻

This system is involved in Na⁺-independent, but Cl⁻-dependent, cystine/glutamate exchange (Bannai, 1984). Thus far, system x_c⁻ has been described in fibroblasts, macrophages, endothelial cells, glial cells and hepatocytes. This system is known to protect cells against oxidative stress. Cysteine uptake is the rate-limiting step for the synthesis of intracellular GSH, an endogenous antioxidant and radical scavenger (Orrenius *et al.* 1983; Meister, 1988; Verity, 1994). Under normal conditions, system ASC supplies cells with cysteine for GSH synthesis. However, during oxidative stress, extracellular cysteine is rapidly converted into cystine, which is not recognized by system ASC. Some cells are able to induce system x_c⁻ in response to oxidative stress (Ishii *et al.* 1992). This system can transport cystine into cells, where it is

converted to cysteine for GSH synthesis. In the CNS, this system is expressed in glia to supply neurons that do not have the ability to induce system x_c⁻ (Sagara *et al.* 1993).

Like neurons, T-lymphocytes in normal conditions show low levels of intracellular cysteine, owing to the low plasma concentration of this amino acid and because these cells lack system x_c⁻. However, in response to interaction with macrophages or fibroblasts, there is an increased recovery of cysteine by T-lymphocytes that appears to determine the induction of pathways for T-cell activation (Mihm and Dröge, 1990; Dröge *et al.* 1991; Mihm *et al.* 1991). Thus, like glial cells, macrophages supply T-cells with cysteine.

Recent insights into the physiology of amino acid transporters based on molecular studies

A deeper understanding of the characteristics and the physiological roles of amino acid transport systems required their molecular identification. Owing to the difficulties of isolating functional transporters from plasma membranes, an important tool for transporter identification has been expression-cloning using *Xenopus laevis* oocytes (Table 1). Analysis of the primary sequences of the different transporters identified to date has led to their classification into the following families of evolutionarily related proteins.

Table 1. Summary of amino acid transporters

| Name of the cloned transporter | Tissue distribution | Corresponding transport system | Specificity |
|--------------------------------|---|--------------------------------|---|
| CAT-1 | Widespread (except liver) | y ⁺ | Lysine, histidine, arginine |
| CAT-2A | Widespread (including liver) | | |
| CAT-2B | Widespread (activated in T-cells) | | |
| EAAC1 | Intestine, kidney, brain | X _{AG} ⁻ | Glutamate, aspartate |
| GLAST | Brain, heart, lung, skeletal muscle, placenta | Glutamate transporter | |
| GLT-1 | Brain, liver | Glutamate transporter | |
| EAAT4 | Brain (cerebellum), placenta | Glutamate transporter | |
| ASCT1, ASCT2 | Widespread | ASC | Small aliphatic amino acids |
| GAT1,2,3,4 | Brain | GABA transporter | |
| GLYT-1a, 1b, GLYT-2 | Brain | 'System GLY-like' | Glycine |
| PROT | Brain | | Proline |
| TAUT-R, M, D | Brain | β-like | Taurine |
| Transporter related proteins: | | | |
| D2/rBAT/NBAT | Intestine, kidney | b ⁰⁺ | Neutral and dibasic amino acids |
| 4F2 hc | Widespread (activated in T-cells) | y ^{+L} | Neutral amino acids: Na ⁺ -dependent, Dibasic amino acids: Na ⁺ -independent |
| Not cloned | | | |
| ? | Widespread | b ⁰⁺ | Neutral and dibasic amino acids |
| ? | Hepatocytes, fibroblast | x _c ⁻ | Glutamate/cystine |
| ? | Widespread | A | Small aliphatic amino acids |
| ? | Intestinal epithelial cells | B | Most neutral amino acids |
| ? | Widespread | B ⁰⁺ | Neutral and dibasic amino acids |
| ? | Intestine | imino | Proline |
| ? | Widespread | L | Branched chains/aromatic amino acids |
| ? | Liver, muscle | N | Glutamine, asparagine, histidine |

The cationic amino acid transporter family (CAT family)

Initially, two mouse cDNA clones encoding proteins involved in the transport of cationic amino acids were isolated: mCAT-1 and mCAT-2 (mouse cationic amino acid transporters 1 and 2) (Kim *et al.* 1991; Wang *et al.* 1991; Closs *et al.* 1993a). When expressed in oocytes, these proteins showed properties similar to the amino acid transport system y^+ . The CAT proteins catalyze the Na^+ -independent uptake of arginine, lysine and ornithine and the Na^+ -dependent uptake of some neutral amino acids, as reported for system y^+ (White, 1985). The distribution of CAT-1 in most tissues, except liver, matches that of system y^+ . The CAT-2 isoform (also called CAT-2A) was subsequently cloned and corresponds to the low-affinity transporter expressed in hepatocytes (Closs *et al.* 1993a). In addition, CAT-2B has been identified as an alternative splice product of CAT-2A with different kinetic properties (Closs *et al.* 1993b). In mouse, CAT-2A and CAT-2B differ by an internal domain of 41 amino acids and are expressed in cells derived from different tissues. In macrophages and T-cells, CAT-2B expression requires cellular activation (Boyd and Crawford, 1992). CAT-2B may provide cells with cationic amino acids as part of the host immune response (see below). Hydropathy analysis showed that the CAT proteins are integral membrane proteins with 12–14 putative membrane-spanning domains (Kim *et al.* 1991; Wang *et al.* 1991; Closs *et al.* 1993a,b).

The importance of the identification of these transporters and the characterization of their regulation lies in the physiological role of cationic amino acids. In humans, arginine is a non-essential amino acid which is synthesized in kidney and liver and is released to be absorbed by other cells *via* CAT transporters. Arginine is also the immediate precursor for the synthesis of NO (nitric oxide), a metabolite with many physiological effects (Moncada and Higgs, 1993). As a vasodilator, it plays an important role in the regulation of blood flow and blood pressure (Moncada, 1994). NO is thought to be a regulator of immune responses by both the autocrine and paracrine pathways (Albina and Henry, 1991; Boyd and Crawford, 1992). In the peripheral nervous system, it is involved in neurotransmission, acting as a mediator of cell–cell signalling. NO is released from non-adrenergic and non-cholinergic nerves in the peripheral nervous system (Moncada, 1994). In the CNS, NO is an important retrograde messenger that modulates long-term potentiation (Musleh *et al.* 1993). Arginine is also a precursor of the synthesis of creatine, an important high-energy phosphate source for muscle contraction (Balsom *et al.* 1994). Lysine, in contrast, is precursor of the synthesis of trimethyllysine and carnitine, which supply long-chain fatty acids through β -oxidation (Bieber, 1988). Ornithine is required for the synthesis of polyamines, which play an important role in cell and tissue growth (Janne *et al.* 1991).

So far, little is known about the transcriptional regulation of the expression of amino acid transporters in general and what factors control the tissue-specific expression of the alternative

splice products CAT-2A and CAT-2B. Moreover, the analysis of the transcription products of the CAT-2 gene revealed the presence of at least three promoters that control the use of different 5' untranslated regions (Finley *et al.* 1995). This mechanism allows different cells to customize the expression of this unique gene, depending on the cellular needs. As indicated above, expression of the isoform CAT-2 appears to play an important role in the activation of T-lymphocytes. The activation process is characterized by expression of the Tea (*T-cell early activated*) gene product, which was later identified as CAT-2B. CAT-2B is normally absent in resting lymphocytes (Kavanaugh *et al.* 1994). Activation is also paralleled by induction of the 4F2 heavy chain (4F2hc) cell surface antigen, a type II membrane glycoprotein that, as will be discussed later, activates a cationic and neutral amino acid transporter with properties reminiscent of system $y^{\text{+L}}$ (Devés *et al.* 1992; Fei *et al.* 1995). Thus, one of the consequences of activation is accumulation of intracellular arginine, and it is likely that this correlates with the higher requirement of activated cells for NO as a regulator of the immune response (Boyd and Crawford, 1992; Parmaceck *et al.* 1989; Devés *et al.* 1992; Kilberg and Häussinger, 1992).

The interactions of these transporters with other proteins may also be involved in their regulation. An interesting observation is the co-regulation of CAT-2 and 4F2hc in lymphocytes, because 4F2hc is thought to be a regulatory protein (see below). Recently, immunohistochemical analysis using different tissues revealed clustering of mCAT-1 protein within the membrane cytoskeleton (Woodard *et al.* 1994), consistent with the possibility that functional expression of mCAT-1 requires interaction with other plasma membrane proteins.

Knowledge of the regulation, synthesis and oligomeric state of dibasic amino acid transporters may, furthermore, provide new insights into amino acid transport disorders such as lysinuric protein intolerance and cystinuria (Rajantie *et al.* 1980, 1981; Crawhall *et al.* 1967; Whelan and Scriver, 1968; Simell, 1989).

*The glutamate transporter family (EAAC family, system X⁻_{AG})**Molecular cloning of Na⁺- and K⁺-dependent glutamate transporters*

Four high-affinity glutamate transporters, EAAC1, GLT-1, GLAST and EAAT4, have recently been cloned using different approaches. Kanai and Hediger (1992) isolated a cDNA encoding the neuronal and epithelial high-affinity glutamate transporter EAAC1 using a *Xenopus laevis* oocyte expression-cloning approach (Hediger and Rhoads, 1994). Kanner and coworkers (Danbolt *et al.* 1992) purified a 73 kDa glycoprotein (GLT-1) from crude synaptosome fraction P₂ which, when reconstituted into liposomes, exhibited high-affinity glutamate transport. An antibody raised against the purified protein was used to isolate a clone from a rat brain cDNA library that encodes a 543-residue protein (Pines *et al.* 1992). Expression studies in HeLa cells confirmed that it is a high-affinity glutamate transporter. Stoffel and colleagues (Storck *et al.* 1992) copurified a 66 kDa hydrophobic glycoprotein (GLAST)

during the isolation of UDPgalactose:ceramide galactosyltransferase. Part of the protein was sequenced by Edman degradation and, on the basis of this sequence, degenerative oligonucleotides were designed to the C terminus of the protein. These were used as a probe to screen a rat brain cDNA library, and a cDNA clone was subsequently isolated which encoded a 573-residue protein. Expression in *Xenopus laevis* oocytes led to the demonstration that GLAST is the high-affinity glutamate transporter. Using polymerase chain reaction (PCR) amplification of cDNA with degenerate oligonucleotide primers, Amara and colleagues subsequently isolated a cDNA from a human motor cortex which encodes the glutamate transporter subtype EAAT4 (Fairman *et al.* 1995).

Importance of extracellular glutamate homeostasis during excitatory neurotransmission

L-Glutamate is considered to be the major mediator of

excitatory neurotransmission in the mammalian central nervous system (Ottersen and Storm-Mathisen, 1984) (see Fig. 1). Almost all the glutamate is located intracellularly, and nerve terminals are known to have the highest concentration (approximately 10 mmol l^{-1}) (Storm-Mathisen *et al.* 1992; Ottersen *et al.* 1992). Glutamate is involved in most aspects of normal brain function including cognition, memory and learning. The glutamate concentration in the synaptic cleft determines the extent of glutamate receptor stimulation. Too much extracellular glutamate is, furthermore, toxic to neurons owing to activation of glutamate receptors, leading to neuronal damage or death. Thus, extracellular glutamate concentration must be kept low for at least two reasons: (1) to ensure a high signal-to-noise ratio during neurotransmission, and (2) to prevent neuronal cell death due to excessive activation of glutamate receptors. Understanding the transport mechanisms controlling extracellular glutamate levels is therefore of critical importance.

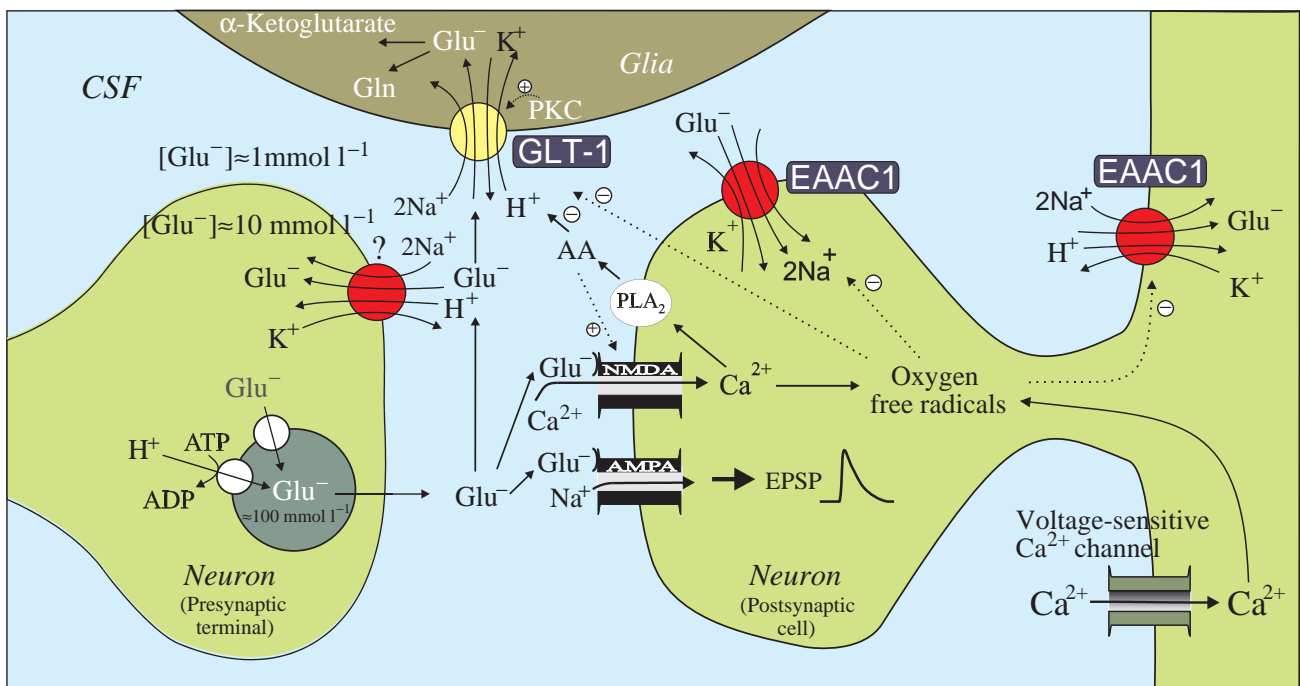


Fig. 1. Glutamate transporters at glutamatergic synapses. The excitatory neurotransmitter L-glutamate (Glu^-) is stored in synaptic vesicles at presynaptic terminals and released into the synaptic cleft to act on glutamate receptors. The α -Amino-3-hydroxy-5-methyl-4-isoxazolepropionic acid (AMPA) receptors mediate fast excitatory postsynaptic potentials (EPSPs) whereas the N-methyl-D-aspartate (NMDA) receptors possess a cation channel which is permeable to Ca^{2+} . High-affinity glutamate transporters play important roles in removing released glutamate from the synaptic cleft. These transporters are also crucial for maintaining the extracellular glutamate concentration of the cerebrospinal fluid (CSF) below neurotoxic levels. The high accumulative power of glutamate transporters is provided by coupling the transport to the co- or countertransport of Na^+ , K^+ and OH^- or H^+ . The figure shows the glial glutamate transporters GLT-1 and GLAST (not shown) and the neuronal glutamate transporter EAAC1. Although EAAC1 was originally thought to be a presynaptic uptake carrier, recent immunocytochemical data have shown that it is expressed in postsynaptic elements such as dendritic shafts and spines, whereas there was no detectable immunostaining at glutamatergic terminals. At present, it is not clear whether glutamatergic terminals also possess a specialized presynaptic glutamate transporter. Glutamate taken up into glial cells *via* GLT-1 or GLAST (not shown) is metabolized to glutamine (Gln) by glutamine synthase (with hydrolysis of ATP) and to α -ketoglutarate by glutamate dehydrogenase or glutamate oxaloacetate transaminase. Glia, in turn, supply the nerve terminal with glutamine and α -ketoglutarate, which can serve as precursors of glutamate synthesis. Arachidonic acid (AA) and reactive oxygen species are both liberated in response to glutamate receptor activation. These compounds have been shown to inhibit or modulate the function of high-affinity glutamate transporters, which can lead to the elevation of extracellular glutamate levels to neurotoxic levels. PLA, phospholipase A; PKC, protein kinase C.

Functional and kinetic properties of the cloned high-affinity glutamate transporters

Coupling stoichiometry of EAAC1. Kanai *et al.* (1995) performed a detailed ion-coupling analysis of glutamate transport induced by EAAC1 expressed in *Xenopus* oocytes. The stoichiometry was studied by comparing the charge flux, the H⁺ (or OH⁻) flux and the initial rates of ²²Na⁺ and [¹⁴C]glutamate uptake. Two-electrode voltage-clamp analysis of glutamate-evoked currents showed a first-order dependence of the currents on extracellular glutamate concentration, indicating that one glutamate molecule is translocated with each transport cycle. Flux measurements using ²²Na⁺ and [¹⁴C]glutamate gave a constant Na⁺:glutamate coupling ratio of 2:1. It was therefore concluded that EAAC1-mediated glutamate uptake is coupled to the cotransport of 2 Na⁺. To test whether transport mediated by EAAC1 is coupled to the cotransport of H⁺ (Bouvier *et al.* 1992) (or the countertransport of OH⁻), the intracellular pH was measured using pH-sensitive microelectrodes impaled into oocytes. The studies revealed that EAAC1-mediated transport is associated with intracellular acidification. The H⁺ (or OH⁻) to charge coupling ratio, estimated from the rate of decrease of the intracellular pH and the depolarization, was 1:1.

Transport mediated by EAAC1 was also shown to involve countertransport of K⁺ (Barbour *et al.* 1988, 1991; Sarantis *et al.* 1990). Nussberger *et al.* (1996) reported the K⁺ coupling stoichiometry for EAAC1 based on studies involving capillary zone electrophoresis (CZE) to monitor solute transport into oocytes. This technique allowed the simultaneous detection of changes of intracellular Na⁺ and K⁺ levels in response to EAAC1-mediated Na⁺ cotransport and K⁺ countertransport. Na⁺ and K⁺ were monitored by CZE using indirect on-column ultraviolet detection. This detection mode takes advantage of the displacement of an organic ultraviolet-absorbing compound, such as imidazole, by the inorganic ion. On the basis of this analysis, EAAC1-mediated uptake of glutamate resulted in an increase in intracellular [Na⁺] and a decrease in intracellular [K⁺], consistent with Na⁺ cotransport and K⁺ countertransport. The exact amount of Na⁺ and K⁺ transported in response to glutamate application was estimated using Rb⁺ as an internal standard and using Na⁺ and K⁺ calibration solutions. These data gave an overall stoichiometry for EAAC1-mediated glutamate transport of 1 glutamate to 2 Na⁺ to 1 H⁺ (or OH⁻) to 1 K⁺. Thus, the uptake of each glutamate molecule is coupled to the cotransport of two Na⁺, the cotransport of 1 H⁺ (or the countertransport of 1 OH⁻) and the countertransport of 1 K⁺, resulting in the net translocation of one positive charge.

Electrogenic properties of glutamate transporters. On the basis of the above stoichiometry, glutamate transporters are electrogenic. Thus, when expressed in *Xenopus* oocytes or cultured mammalian cells, L-glutamate and D- and L-aspartate induce inward currents (Arriza *et al.* 1994; Fairman *et al.* 1995; Kanai and Hediger, 1992; Kanai *et al.* 1994, 1995; Klöckner *et al.* 1993; Wadiche *et al.* 1995b). The detailed analysis of the pre-steady-state and steady-state currents displayed by these

transporters in response to step changes in the membrane potential provided important information on their dynamics (i.e. the kinetics of the transitions between the empty transporters and the transporter-substrate complexes) and on their structures (i.e. whether the substrate binding sites are within or outside the membrane electric field) (Loo *et al.* 1993; Mager *et al.* 1993; Wadiche *et al.* 1995b). In response to sudden changes of the membrane potential, two components of electric currents were usually observed in oocytes expressing the transporters, transient pre-steady-state currents and steady-state currents. With respect to glutamate transporters such as EAAC1, the accurate determination of pre-steady-state currents has been difficult because (1) they are much smaller than those of the Na⁺/glucose cotransporter and the GABA transporter, and (2) useful inhibitors that 'freeze' the transporter-inhibitor complex in a non-transporting form are not available for EAAC1 and GLAST (Kanai *et al.* 1994, 1995; Loo *et al.* 1993; Mager *et al.* 1993; Wadiche *et al.* 1995b). Recently, Kavanaugh and coworkers used kainate, a non-transported inhibitor of GLT-1, to isolate pre-steady-state currents for human GLT-1 (Wadiche *et al.* 1995b). On the basis of the Na⁺-dependence of the pre-steady-state currents, these investigators concluded that the currents reflected the voltage-dependent binding and unbinding of Na⁺ near the extracellular surface of the transporter. The pre-steady-state currents of GLT-1 did not appear to reflect conformational changes of the transporter molecule (Wadiche *et al.* 1995b). This supports the idea that the empty carrier is electroneutral (Heinz *et al.* 1988).

Given the electroneutral behavior of the empty carrier within the membrane, the fully loaded carrier, which carries one glutamate anion, two Na⁺ cations and possibly one H⁺, has overall one or two positive charges, and its translocation is therefore electrogenic. Consistent with this, the current-voltage relationships of glutamate-induced steady-state currents of EAAC1, GLT-1 and GLAST exhibited strong voltage-dependences (Fairman *et al.* 1995; Kanai *et al.* 1995; Klöckner *et al.* 1993; Wadiche *et al.* 1995b). At saturating glutamate concentration, the glutamate-induced currents of EAAC1 increased with hyperpolarization of the membrane (Kanai *et al.* 1994). Therefore, a specific voltage-dependent step must be rate-limiting for the glutamate translocation process. This step was referred to as the voltage-dependent charge translocation step of the fully loaded carrier (Kanai *et al.* 1994, 1995).

The countertransport of K⁺ appears to facilitate the relocation of the empty carrier so that the relocation step is faster than the charge translocation step (Kanai *et al.* 1994, 1995). The role of H⁺ or OH⁻ in the transport process is not yet clear. H⁺ or OH⁻ is either involved in the relocation or in the charge translocation step.

The functional characterization of EAAT4 has led to the identification of an additional property displayed by high-affinity glutamate transporters (Fairman *et al.* 1995). The current mediated by EAAT4 expressed in *Xenopus* oocytes was linearly dependent on membrane potential and reversed at

approximately -20 mV. The substrate-induced current in EAAT4 had two components: a transporter current, reflecting translocation of substrates across the membrane, and a Cl^- current. The latter component had the characteristics of a substrate-gated Cl^- channel. The anion selectivity of the channel was $\text{NO}_3^- > \text{I}^- > \text{Br}^- > \text{Cl}^- > \text{F}^-$. Cl^- was only translocated in the presence of glutamate or related substrates. Cl^- movement was not thermodynamically coupled to substrate transport. Cl^- is therefore not necessary for substrate translocation. The results of Amara and coworkers strongly indicate that EAAT4 itself functions as a Cl^- channel (Fairman *et al.* 1995). Amara and colleagues also observed that the other glutamate transporter isoforms, in particular GLAST, exhibited current reversals to various degrees when the membrane potential was shifted to more positive potentials (Wadiche *et al.* 1995a). Thus, glutamate transporters appear to possess structures which can function as Cl^- channels.

Regulation of glutamate transport activity. There is increasing evidence to suggest that glutamate transporters are tightly regulated, i.e. through protein-kinase-C-mediated phosphorylation (Casado *et al.* 1993), arachidonic acid (Trotti *et al.* 1995; Volterra *et al.* 1992; Zerangue *et al.* 1995) and oxygen free radicals (Volterra *et al.* 1994). It has recently been demonstrated that peroxynitrite and hydrogen peroxide (two endogenously occurring oxidants) affect glutamate transport by directly targeting a putative oxidant-sensitive site which is shared by the different glutamate transporter isoforms (Trotti *et al.* 1996). Disulfide bonds and sulfhydryl groups were furthermore shown to play an important role in regulating glutamate transport activity. A novel modulatory site which is sensitive to the redox environment was described for the three rat glutamate transporter recombinant proteins EAAC1, GLT-1 and GLAST. This site was shown to be necessary for changes in the uptake activity in response to changes of the extracellular redox environment when recombinant proteins were functionally reconstituted in artificial membranes or expressed in glial cell cultures (D. Trotti, B. Lodi-Rizzini, D. Rossi, O. Hauge, G. Racagni, N. C. Danbolt and A. Volterra, in preparation). Similar results were obtained for EAAC1 expressed in *Xenopus* oocytes (D. Trotti and M. A. Hediger, in preparation).

Distribution of glutamate transporter subtypes. Several studies have addressed the tissue and cellular distribution at the protein and mRNA levels of the different transporter subtypes (Lehre *et al.* 1995; Rothstein *et al.* 1994) by using both immunocytochemistry and *in situ* hybridization. To summarize, EAAC1 has been found in the neurons of brain and in the epithelia of intestine, kidney, liver and heart. GLT-1 is expressed in astrocytes throughout the CNS. GLAST is expressed in astrocytes, in particular in the cerebellum, and in heart, lung, skeletal muscle and placenta. EAAT4 is expressed in the cerebellar Purkinje cells and in the placenta.

System ASC

Recently, two new members of the high-affinity glutamate transporter family have been described: ASCT1 and ASCT2

(Shafqat *et al.* 1993; Arriza *et al.* 1993; Tate *et al.* 1996). They were isolated from human hippocampal and mouse testis cDNA libraries, respectively, and show moderate amino acid sequence similarity to mammalian glutamate transporters (40–44% identity). Consistent with this, ASCT1 and ASCT2 have properties similar to system ASC. In addition to alanine, serine and cysteine, ASCT1 and ASCT2 also transport glutamate with low affinity at neutral pH and with increased affinity at reduced pH. This feature has already been described for system ASC in several cell lines (Vadgama and Christensen, 1984; Makowske and Christensen, 1982). It is interesting because it points to similar characteristics in substrate binding sites. Consistent with this, hydrophathy analysis and sequence comparison not only revealed similar patterns of hydrophobicity between glutamate and ASC transporters but also the presence of a common extended hydrophobic and highly conserved stretch near the C-terminal portion of these proteins. It is conceivable that the substrate binding site in ASCT1, ASCT2 and the glutamate transporters lies in this hydrophobic stretch.

The ASCT1 and ASCT2 isoforms each have distinct characteristics. Whereas ASCT1-mediated transport is electrogenic, as reported for glutamate transporters, ASCT2-mediated transport is electroneutral, as described for system ASC (Bussolati *et al.* 1992). In addition, ASCT2 is reported to accept glutamine and asparagine with high affinity, and methionine, leucine and glycine with low affinity, whereas ASCT1 does not recognize these substrates. These aspects suggest that ASCT1 is more closely related to the glutamate transporters, whereas ASCT2 is more closely related to system ASC.

System ASC has been suggested to exist as different isoforms in different tissues (Christensen, 1990). It will be interesting to determine whether this is due to expression of ASCT1, ASCT2 and possibly other related transporters.

The GABA transporter family

GABA (γ -aminobutyric acid) is the predominant inhibitory neurotransmitter in brain. Recent data show that temporal-lobe epilepsy is characterized in part by a loss of glutamate-stimulated GABA release due to a reduction in the number of GABA transporters (During *et al.* 1995). Four different Na^+ - and Cl^- -dependent GABA transporters have been cloned thus far from mouse, rat and human brain (Guastella *et al.* 1990; Nelson *et al.* 1990; Borden *et al.* 1992; López-Corcuera *et al.* 1992). Their primary sequences are characterized by a high level of homology (Liu *et al.* 1993). Recently, homologs have also been isolated from the electric lobe of *Torpedo* (Guimbal *et al.* 1995) and the embryo of lepidopteran *Manduca sexta* (Mbungu *et al.* 1995). The four different mammalian GABA transporter isoforms, GAT1, GAT2, GAT3 and GAT4, show different distributions and pharmacological properties. GAT1 and GAT4 are high-affinity GABA transporters with a specific neuronal distribution (Radian *et al.* 1990; Majeed *et al.* 1992). Their mRNAs are detected in all parts of the brain and they are inhibited by guvacine and nipecotic acid, non-

selective blockers of neuronal GABA uptake. GAT4 also transports β -alanine and taurine (Liu *et al.* 1993).

GAT2 and GAT3 are low-affinity GABA transporters with a primarily glial distribution in brain. GAT3 also accepts β -alanine and taurine, whereas GAT2 has a relatively low affinity for these substrates. GAT2 and GAT3 are also expressed in liver and kidney. Cerebral expression of GAT3 is developmentally regulated, and its mRNA is more abundant in neonatal than in adult mouse brain.

Following the identification of cDNAs encoding several GABA transporter isoforms, screening brain cDNA libraries or PCR-based cloning approaches led to the isolation of clones corresponding to transporters for additional neurotransmitters such as norepinephrine, dopamine, serotonin, proline and glycine (Pacholczyk *et al.* 1991; Giros *et al.* 1991; Kilty *et al.* 1991; Shimada *et al.* 1991; Hoffman *et al.* 1991; Freneau *et al.* 1992; Shafqat *et al.* 1995; Liu *et al.* 1992, 1993). These transporters share significant homology with the GABA transporters and all are Na^+ - and Cl^- -coupled.

The proline and glycine transporters of the type 'PROT' and 'GLYT', respectively, were also found to be part of the GABA transporter family. Two PROT isoforms have been isolated from rat and human brain (Freneau *et al.* 1992; Shafqat *et al.* 1995). The following three GLYT isoforms have been identified: GLYT-1a and GLYT-1b, which are the product of alternative splicing, and GLYT-2, which is encoded by a different gene (Liu *et al.* 1992, 1993). Whereas glycine acts as an inhibitory neurotransmitter in the caudal mammalian brain (Kanner, 1989, 1994), the function of proline in the CNS is not yet clearly understood, and specific high-affinity proline receptors have not been identified. Nevertheless, northern analysis showed a distinct cerebral distribution for PROT mRNA, suggesting a specific role for this transporter in the CNS (Shafqat *et al.* 1995). In addition, neurotoxic effects of proline have been reported (Nadler *et al.* 1988). It has been suggested that the function of high-affinity L-proline transport is to supply mitochondria of nerve terminals with proline as a precursor of Krebs cycle intermediates. Proline forms glutamate *via* oxidation processes and glutamate is converted to α -ketoglutarate by glutamate dehydrogenase (Shafqat *et al.* 1995). Future studies of PROT and GLYT should be fruitful in determining their roles in the physiology and pathology of nerve transmission.

The properties of the PROT and GLYT transporters are distinct from those of the system A, ASC and 'imino' transporters, which are also involved in Na^+ -dependent transport of glycine and proline, in addition to transport of other neutral amino acids. The latter transporters show relatively broad selectivities and affinities, whereas the PROT and GLYT transporters have high affinities for their specific substrates. The systems A and ASC transporters are widely distributed, and the imino system is thought to be mainly expressed in the intestinal brush border, whereas PROT and GLYT are primarily expressed in the cerebrum. Conceivably, the PROT and GLYT cDNA probes will lead to the molecular identification of additional general neutral amino acid transporters.

Additional cDNAs of the GAT family have been isolated that encode taurine transporters (TAUT) and a betaine transporter (BGT-1). Taurine and betaine transporters have been identified in both brain and kidney (Uchida *et al.* 1992; Yamauchi *et al.* 1992). While the neuronal roles of these amino acids have yet to be elucidated, the abundance of taurine in brain and the general importance of taurine and betaine as non-perturbing osmolytes suggest specific functions of the TAUT and BGT-1 transporters in the CNS (Uchida *et al.* 1992; Yamauchi *et al.* 1992).

Hydropathy analysis of GABA family members show that they are proteins with 12 membrane-spanning domains and consensus sites for *N*-glycosylation localized in the extracellular loop between transmembrane helices III and IV. The first 30 amino acids of this loop are well-conserved and are thought to be involved in substrate binding. Site-directed mutagenesis showed that tryptophan residue 222 is strictly involved in substrate binding, whereas tryptophan 230 appears to be involved in appropriate sorting of the transporter into the plasma membrane (Jursky *et al.* 1994). These neurotransmitter transporters also have protein kinase C consensus phosphorylation sequences in putative intracellular loops which are highly conserved in all members of the family (Shafqat *et al.* 1995). It was also suggested that arginine 69, which is conserved in all members of the GABA family, is involved in Cl^- coupling (Jursky *et al.* 1994).

D2/NBAT, 4F2, b^{0+} , y^L and L

Among the cDNAs cloned so far, it is important to note that several actually encode activators or regulators of amino acid transporters. Examples are D2/NBAT and 4F2 heavy chain (4F2hc). D2/NBAT was cloned from kidney and intestine of rat and rabbit by expression-cloning, screening cDNA libraries for the Na^+ -independent transport of cationic and neutral amino acids (Wells and Hediger, 1992; Bertran *et al.* 1992b; Tate *et al.* 1992). The characteristics of the transport induced by D2/NBAT are very similar to those of system b^{0+} , the Na^+ -independent high-affinity cationic and neutral amino acid transport system previously described in mouse blastocysts and fibroblasts. D2/NBAT is a type II membrane glycoprotein with a single transmembrane domain, a short N-terminal cytoplasmic domain and a large extracellular C-terminal domain. This latter domain shows significant homology to a family of enzymes metabolizing carbohydrates such as α -amylases and α -glucosidases (Fig. 2). These features distinguish D2/rBAT/NBAT from typical membrane transport proteins, which usually have multiple transmembrane domains.

Interestingly, D2/NBAT is homologous (29% identity) to the cell surface antigen 4F2 heavy chain (4F2hc), another type II membrane glycoprotein. This antigen is associated with T-cell activation and tumor cell growth, and it is widely expressed in mammalian tissues, malignant cells and activated B- and T-lymphocytes (Haynes *et al.* 1981; Yagita *et al.* 1986). 4F2 is a 125 kDa disulfide-linked heterodimer composed of an 85 kDa glycosylated heavy chain (4F2hc) and a 41 kDa non-glycosylated light chain. Recently, Wang and Tate (1995)

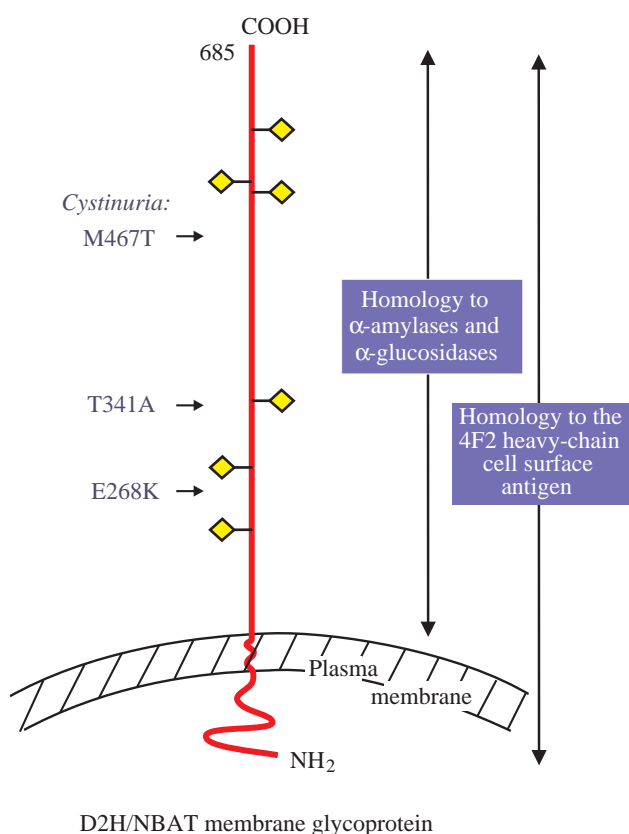


Fig. 2. The amino acid transporter activators D2/NBAT and 4F2hc are predicted to be type II membrane glycoproteins with a short hydrophilic cytoplasmic N terminus, a single membrane-spanning domain and a long extracellular glycosylated C terminus. Mis-sense mutations which cause type I cystinuria in human D2/NBAT (D2H/NBAT) are indicated. The extracellular part of these proteins is homologous to a family of carbohydrate-metabolizing enzymes. Diamonds indicate putative N-glycosylation sites.

showed that NBAT (85 kDa) is also associated with a smaller protein (50 kDa) and that the association involves one or more disulfide bonds, and it was suggested that the 50 kDa protein could play a role in amino acid transport. D2/NBAT and 4F2hc all have a conserved cysteine residue at position 111 (rat D2 nomenclature), which may be involved in dimerization through the formation of disulfide bonds.

Expression of 4F2hc in *Xenopus* oocytes induced amino acid transport with characteristics different from that induced by D2. 4F2hc induced Na^+ -independent uptake of cationic amino acids, but not cystine, and Na^+ -dependent uptake of neutral amino acids (Wells and Hediger, 1992; Bertran *et al.* 1992a), properties reminiscent of system y^{L} (Van Winkle, 1993; Fei *et al.* 1995; Devés *et al.* 1992).

The mechanisms by which D2/NBAT and 4F2hc activate distinct amino acid transport systems is currently unknown. When expressed in oocytes, these proteins dramatically (at least 100-fold) upregulate the endogenous b^{0+} - or y^{L} -like amino acid transport systems (Wells and Hediger, 1992; Bröer *et al.* 1995). One hypothesis for activation is that the D2/NBAT

and 4F2hc type II membrane proteins form heterodimers with endogenous oocyte transporters which may correspond to the 50 and 41 kDa light chains, respectively. A recent study also revealed that 4F2hc is involved in virus-mediated cell fusion and fusion of monocytes, and that this process involves activation of the integrin system (Ohgimoto *et al.* 1995). Additional studies will be required to elucidate the remarkable ability of these type II membrane glycoproteins to upregulate specific transport systems.

A defect of the cystine transporter responsible for renal cystine reabsorption results in cystinuria, an autosomal recessive disorder of renal amino acid transport and a common hereditary cause of nephrolithiasis. The low solubility of cystine in the urine favors the formation of cystine-containing kidney stones. Earlier studies with human isolated cortical tubules, brush-border membrane vesicles and kidney cortex slices have suggested that cystine uptake in kidney occurs *via* two saturable transport systems (Segal and Thier, 1995). One system has a high affinity for cystine and was thought to be located in proximal tubule S3 segments. The other system corresponds to a low-affinity, high-capacity cystine transporter and appears to be expressed in proximal tubule S1 segments. The former system is Na^+ -independent and inhibited by dibasic amino acids. It is defective in patients with type I cystinuria. The latter system is kidney-specific and may be defective in patients with type III cystinuria. The dependence of this system on Na^+ has not been established. With the exception of neutral amino acids, D2/NBAT-induced transport in oocytes exhibited the same substrate specificity as the type I cystinuria transporter, and *in situ* hybridization of rat kidney demonstrated that D2 is specifically expressed in proximal tubule S3 segments (Kanai *et al.* 1992). Immunocytochemistry revealed that D2/NBAT is expressed in the brush-border membrane of S3 cells (Furriols *et al.* 1993). Therefore, the human D2/NBAT gene was investigated in patients with type I cystinuria. Recent studies established that mutations in the human D2/NBAT gene are a common cause of the formation of kidney stones in patients with type I cystinuria (Fig. 2) (Calonge *et al.* 1994; Miyamoto *et al.* 1995). A frequently occurring mutation is Met467Thr. Oocyte expression studies showed that this mutation decreases the transport rate of cystine by 80% compared with wild-type human D2/NBAT. Other mutations identified are Thr341Ala and Gln268Lys. These gave 46.1 and 38.5% reductions in the rate of cystine transport, respectively. Taken together, the results demonstrate that these mutations affect important regions of D2/NBAT that are required to activate the kidney b^{0+} -like cystine transporter.

The exact mechanism of cystine reabsorption in kidney is not yet clearly understood. It is likely that proteins other than D2/NBAT are also involved in type I cystinuria. Electrophysiological studies demonstrated that the D2/NBAT-induced transporter in oocytes is an amino acid exchanger, suggesting that cystine is absorbed in exchange for intracellular amino acids (Y. Kanai and M. A. Hediger, unpublished data; Busch *et al.* 1994). Thus, in type III cystinuria, impaired reabsorption of cystine in proximal tubule S1 segments by the

low-affinity transporter would be expected to result in accumulation of cystine in the lumen of S3 segments and, through D2/NBAT/b⁰⁺-mediated amino acid exchange, in urinary excretion of dibasic and neutral amino acids. The exchange mechanism provides an explanation for the lysinuria observed in patients with type III cystinuria. The transporter involved in type III cystinuria has not yet been cloned.

Recent studies indicated that the y^{+L} transport induced by 4F2hc is similar to system-L-mediated transport (Bröer *et al.* 1995). However, there is disagreement as to the level of inhibition of system y^{+L} by BCH, a characteristic substrate of system L (Fei *et al.* 1995; Bröer *et al.* 1995). Thus, the relationship between the systems y^{+L} and L requires further studies. Interestingly, system L was also reported to catalyze amino acid exchange under certain conditions (Christensen, 1990), by analogy with b⁰⁺-mediated amino acid exchange. However, whether the 4F2hc-induced transporter is an amino acid exchanger has not yet been demonstrated. The cDNAs encoding systems b⁰⁺, y^{+L} and L have not yet been isolated.

Systems A

As alluded to above, system A is a ubiquitous, highly regulated, Na⁺-coupled amino acid transport system that plays a key role in providing cells with neutral amino acids as nutrients and for protein synthesis. However, a cDNA encoding this important amino acid transport system has not yet been isolated.

System x^{-c}

Despite the importance of this system in protecting cells from oxidative stress, system x^{-c} has not yet been cloned.

K⁺-coupled amino acid transporters in insect midgut

Amino acid transporters in insects have been studied in the adult stage of the orthopteran *Blaterra gigantea* and in the larval stage of the coleopteran *Leptinotarsa decemlineata* and the

lepidopteran *Philosamia cynthia* and *Manduca sexta*. While more work is necessary to provide a general description of these processes, interesting characteristics of amino acid transporters in the midgut of coleopteran and lepidopteran insects have recently been reported. Although in Coleoptera it was not possible to demonstrate the presence of ion-coupled amino acid transport (Reuveni *et al.* 1993), orthopteran transport of amino acids was shown to be Na⁺-coupled; the Na⁺ electrochemical ion gradient is maintained by a Na⁺/K⁺-ATPase, analogous to mammalian cells. In contrast, Lepidoptera revealed transport features that were completely different from those found in mammals. The hemolymph of lepidopteran larvae has a very low ratio of [Na⁺] to [K⁺] and relatively high Mg²⁺ and Ca²⁺ concentrations, in marked contrast to mammalian blood (Giordana *et al.* 1982; Dow *et al.* 1984).

The lepidopteran midgut is mainly composed of two types of cells: goblet cells and columnar cells (Fig. 3) (Anderson and Harvey, 1966; Cioffi, 1979). Goblet cells are involved in net secretion of K⁺. An apical electrogenic H⁺ V-ATPase in parallel with an apical K⁺/2H⁺ antiporter (Wieczorek *et al.* 1991) are responsible for active secretion of K⁺ from the hemolymph into the midgut lumen (Fig. 3). This K⁺ pump produces a high transapical electrochemical potential difference for K⁺ of approximately -200 mV, which is composed almost completely of the voltage component (Giordana *et al.* 1982; Dow and Peacock, 1989), as well as a large pH difference between the hemolymph (pH 6.8) and the lumen (pH 10.5) because K⁺ reaches the lumen accompanied by carbonate, resulting in luminal alkalization (Dow, 1984). The columnar cells have a well-developed brush border and accumulate amino acids, coupled to the cotransport of K⁺ (Giordana *et al.* 1982, 1989).

Using brush-border membrane vesicles (BBMVs) prepared from different species of lepidopteran larva, such as *Philosamia cynthia*, *Manduca sexta*, *Bombyx mori* and *Pieris brassicae*, it has been possible to distinguish several distinct amino acid transport systems with overlapping specificities

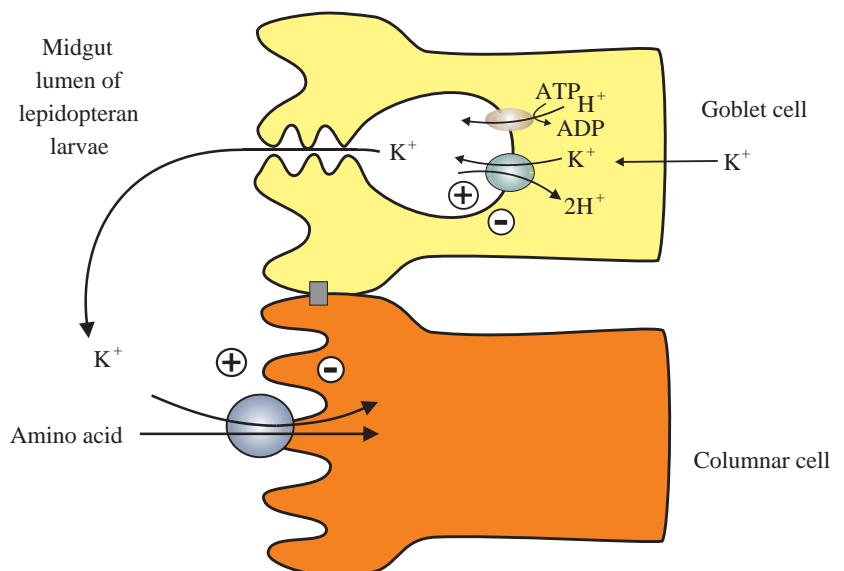


Fig. 3. K⁺-coupled amino acid transporters in brush-border membranes of insect midgut columnar cells. The plasma membrane V-ATPase of goblet cells is an electrogenic proton pump which energizes electrogenic K⁺ secretion via K⁺/2H⁺ antiport.

(Hanozet *et al.* 1989; Harvey and Wiczorek, 1997). With minor exceptions, general characteristics are conserved within the Lepidoptera. There is evidence for the presence of separate neutral and cationic K⁺-coupled amino acid transporters. These transporters are characterized by a particularly strong dependence on the transmembrane potential difference (Parthasarathy and Harvey, 1994). In *Philosamia cynthia*, there is evidence for a separate proline transporter, but proline is a poor inhibitor of other neutral amino acid transporters (Giordana *et al.* 1989). A proline, glycine:K⁺ symporter has furthermore been recently described in *Manduca sexta* (Bader *et al.* 1995). Glutamate transport is K⁺-coupled but appears not to use an independent transporter in *Manduca sexta* (Xie *et al.* 1994). A cationic K⁺ cotransporter has been found in *Philosamia cynthia* (Giordana *et al.* 1985), and a K⁺/arginine cotransporter, system R⁺, operates at near neutral pH has been described in *Manduca sexta* (Liu and Harvey, 1996a). Lysine uptake probably occurs *via* a B-like system (see below), since leucine inhibits lysine uptake (Liu and Harvey 1996b). The neutral amino acid transporter has been studied most extensively. Inhibition, counterflow and kinetic experiments using BBMV's (Giordana *et al.* 1982, 1989, 1994; Hennigan *et al.* 1993a,b) revealed a broad substrate specificity with most of the neutral amino acids sharing the same transporter. This feature is reminiscent of the vertebrate epithelial amino acid transport system B. As noted above, members of system B have not been cloned yet.

The larval neutral amino acid transporters in *Philosamia cynthia*, *Manduca sexta*, *Bombyx mori* and *Pieris brassicae* show different dependencies on pH, but an increased uptake was generally reported at physiological alkaline pH (Sacchi *et al.* 1990; Hennigan *et al.* 1993b). Neutral amino acid transport is not strictly K⁺-dependent *in vitro*. Studies using BBMV's revealed that Na⁺ and Li⁺ can also serve as coupling ions under certain conditions (e.g. reduced pH). However, as noted above, the Na⁺ concentration is very low in relation to the K⁺ concentration *in vivo* and Li⁺ is absent. Although the lepidopteran midgut has a low Na⁺ concentration, a large inwardly directed electrochemical Na⁺ gradient exists but it is composed almost entirely of the voltage component (Giordana *et al.* 1982; Dow and Peacock, 1989). Kinetic analysis revealed that the transporter shows a higher affinity for Na⁺ than for K⁺, but that the maximal transport rate is higher in the presence of K⁺ (Hanozet *et al.* 1992; Sacchi *et al.* 1994). The unlikelihood of separate Na⁺- and K⁺-coupled transporters is further demonstrated by the reduced K⁺-coupled leucine uptake at increased external Na⁺ concentration (Sacchi *et al.* 1994).

The following kinetic mechanism for the neutral amino acid transport process has been proposed. First, the carrier randomly binds K⁺ and leucine with a 1:1 stoichiometry. Either the fully loaded carrier or the carrier containing leucine alone then translocates and releases the amino acid on the opposite side of the membrane (Parenti *et al.* 1992).

To obtain molecular information on this K⁺-coupled transporter, we have initiated expression-cloning with mRNA derived from *Manduca sexta* midgut and expressed in *Xenopus*

oocytes. Injection of mRNA prepared from the larval midgut induced Na⁺-dependent uptake of leucine and phenylalanine. At pH 8.0, the uptake increased 1.5- to 2.5-fold above that of water-injected control oocytes. Similar results have been obtained with mRNA from *Philosamia cynthia* (Sacchi *et al.* 1995). Further characterization of this transporter is now in progress. Knowledge of its unique properties should yield new insights into the mechanisms of ion-coupled solute transport.

Ultimately, this study may also lead to the molecular identification of the mammalian amino acid transport system B. As mentioned above, the cDNA encoding a Na⁺- and Cl⁻-coupled GABA transporter has been isolated from a *Manduca sexta* embryo cDNA library (Mbungu *et al.* 1995). The primary sequence showed moderate homology (72–77% similarity) to mammalian GABA transporters. The clone has been expressed in *Xenopus* oocytes, and GABA uptake showed strong Na⁺-dependence (Mbungu *et al.* 1995). In contrast to the mammalian homologue, Br⁻ could substitute for Cl⁻.

Knowledge of the molecular characteristics of the insect neutral amino acid transporters may also lead to the design of vectors to control insect pests. It was reported that the *Bacillus thuringiensis* δ -endotoxin CryIA(a) partially inhibited leucine uptake in BBMV's prepared from *Bombyx mori* larvae and phenylalanine uptake in *Lymantria dispar* midgut. This inhibition can be explained by a direct interaction of the endotoxin with the transporter complex (Wolfersberger, 1991; Parenti *et al.* 1995). The receptor that binds δ -endotoxin CryIA(c) in the midgut brush border of *Manduca sexta* larvae has been identified and was found to correspond to aminopeptidase N (Knight *et al.* 1994; Sangadala *et al.* 1994). This enzyme has been implicated in Na⁺-dependent neutral amino acid transport by system B⁰ in bovine renal BBMV's (Plakidou-Dymack *et al.* 1993).

Conclusions

The cloning and functional expression in *Xenopus* oocytes of vertebrate and invertebrate amino acid transporters has provided new information into the transport characteristics, regulation and physiological roles of amino acid transporters. These studies have also significantly advanced our understanding of the pathophysiology of transporters in neurotransmission, intestinal nutrient absorption, nephrolithiasis, diabetes, cancer, etc. Although cDNA clones corresponding to several classically characterized amino acid transport systems have been isolated, much work remains to be done to complete their molecular characterization. Several important amino acid transporters, such as systems A, B, L, x^{-c} and the imino system, await characterization at the molecular level. In addition, the cDNAs encoding the transporters activated by D2/NBAT and 4F2-hc (i.e. b⁰⁺, y^{+L}, etc.) have also not been isolated.

We thank David Rhoads for comments on the manuscript. This work was supported in part by the National Institutes of Health Grants DK 43171 to M.A.H. and AI 30464 to W.R.H.

References

- ALBINA, J. E. AND HENRY, W. J. (1991). Suppression of lymphocyte proliferation through the nitric oxide synthesizing pathway. *J. surg. Res.* **50**, 403–409.
- ANDERSON, E. AND HARVEY, W. R. (1996). Active transport by the *Cecropia* midgut. II. Fine structure of the midgut epithelium. *J. Cell Biol.* **31**, 107–134.
- ARRIZA, J. L., FAIRMAN, W. A., WADICHE, J. I., MURDOCH, G. H., KAVANAUGH, M. P. AND AMARA, S. G. (1994). Functional comparisons of three glutamate transporter subtypes cloned from human motor cortex. *J. Neurosci.* **14**, 5559–5569.
- ARRIZA, J. L., KAVANAUGH, M. P., FAIRMAN, W. A., WU, Y. N., MURDOCH, G. H., NORTH, R. A. AND AMARA, S. G. (1993). Cloning and expression of a human neutral amino acid transporter with structural similarity to the glutamate transporter gene family. *J. biol. Chem.* **268**, 15329–15332.
- BADER, A. L., PARTHASARATHY, R. AND HARVEY, W. R. (1995). A novel proline, glycine:K⁺ symporter in midgut brush-border membrane vesicles from larval *Manduca sexta*. *J. exp. Biol.* **198**, 2599–2607.
- BALSOM, P. D., SODERLUND, K. AND EKBLOM, B. (1994). Creatine in humans with special reference to creatine supplementation. *Sports Med.* **18**, 268–280.
- BANNAI, S. (1984). Transport of cysteine in mammal cells. *Biochim. biophys. Acta* **779**, 289–306.
- BARBOUR, B., BREW, H. AND ATTWELL, D. (1988). Electrogenic glutamate uptake in glial cells is activated by intracellular potassium. *Nature* **335**, 433–435.
- BARBOUR, B., BREW, H. AND ATTWELL, D. (1991). Electrogenic uptake of glutamate and aspartate into glial cells isolated from the salamander (*Ambystoma*) retina. *J. Physiol., Lond.* **436**, 169–193.
- BERTAN, J., MAGAGNIN, S., WERNER, A., MARKOVICH, D., BIBER, J., TESTAR, X., ZORZANO, A., KUHN, L. C., PALACIN, M. AND MURER, H. (1992a). Stimulation of system y⁺-like amino acid transport by the heavy chain of human 4F2 surface antigen in *Xenopus laevis* oocytes. *Proc. natn. Acad. Sci. U.S.A.* **89**, 5606–5610.
- BERTAN, J., WERNER, A., MOORE, M. L., STANGE, G., MARKOVICH, D., BIBER, J., ZORZANO, A., PALACIN, M. AND MURER, H. (1992b). Expression cloning of cDNA from rabbit kidney cortex that induces a single transport system for cystine and dibasic and neutral amino acids. *Proc. natn. Acad. Sci. U.S.A.* **89**, 5601–5605.
- BIEBER, L. L. (1988). Carnitine. *A. Rev. Biochem.* **57**, 261–283.
- BODEN, G., TAPPY, L., JADALI, F., HOELDTKE, R. D., REVANI, I. AND OWEN, O. E. (1990). Role of glucagon in disposal of an amino acid load. *Am. J. Physiol.* **259**, E225–E232.
- BONADONNA, R. C., SACCOMANI, M. P., COBELLI, C. AND DEFONZO, R. A. (1993). Effect of insulin on system A amino acid transport in human skeletal muscle. *J. clin. Invest.* **91**, 514–521.
- BORDEN, L. A., SMITH, K. E., HARTIG, P. R., BRANCHEK, T. A. AND WEISHANK, R. L. (1992). Molecular heterogeneity of the γ -aminobutyric acid (GABA) transport system. *J. biol. Chem.* **267**, 21098–21104.
- BOUVIER, M., SZATKOWSKI, M., AMATO, A. AND ATTWELL, D. (1992). The glial cell glutamate uptake carrier countertransports pH-changing anions. *Nature* **360**, 471–474.
- BOYD, C. A. AND CRAWFORD, D. H. (1992). Activation of cationic amino acid transport through system y⁺ correlates with expression of the T-cell early antigen gene in human lymphocytes. *Eur. J. Physiol.* **422**, 87–89.
- BRÖER, S., BRÖER, A. AND HAMPRECHT, B. (1995). The 4F2 hc surface antigen is necessary for expression of system L-like neutral amino acid-transport activity in C6-BU-1 rat glioma cells: evidence from expression studies in *Xenopus laevis* oocytes. *Biochem. J.* **312**, 863–870.
- BROOKES, N. (1988). Neutral amino acid transport in astrocytes: characterization of Na⁺-dependent and Na⁺-independent components of alpha-aminoisobutyric acid uptake. *J. Neurochem.* **51**, 1913–1918.
- BUSCH, A. E., HERZER, T., WALDEGGER, S., SCHMIDT, F., PALACIN, M., BIBER, J., MARKOVICH, D., MURER, H. AND LANG, F. (1994). Opposite directed currents induced by the transport of dibasic and neutral amino acids in *Xenopus* oocytes expressing the protein rBAT. *J. biol. Chem.* **269**, 25581–25586.
- BUSSOLATI, O., LARIS, P. C., ROTOLI, B. M., DALL'ASTA, V. AND GAZZOLA, G. C. (1992). Transport system ASC for neutral amino acids. An electroneutral sodium/amino acid cotransport sensitive to membrane potential. *J. biol. Chem.* **267**, 8330–8335.
- CALONGE, M. J., GASPARINI, P., CHILLARON, J., CHILLO, M., GALLUCCI, M., ROUSAUD, F., ZELANTE, L., TESTAR, X., DALLAPICCOLA, B., DI SILVERIO, F., BARCELO, P., ESTIVILL, X., ZORZANO, A., NUNES, V. AND PALACIN, M. (1994). Cystinuria caused by mutations in rBAT, a gene involved in the transport of cystine. *Nature Genetics* **6**, 420–425.
- CARIAPPA, R. AND KILBERG, M. S. (1992). Plasma membrane domain localization and transcytosis of the glucagon-induced hepatic system A carrier. *Am. J. Physiol.* **263**, E1021–E1028.
- CASADO, M., BENDAHAN, A., ZAFRA, F., DANBOLT, N. C., ARAGON, C., GIMENEZ, C. AND KANNER, B. I. (1993). Phosphorylation and modulation of brain glutamate transporters by protein kinase C. *J. biol. Chem.* **268**, 27313–27317.
- CHEN, J. G. AND KEMPSON, S. A. (1995). Osmoregulation of neutral amino acid transport. *Proc. Soc. exp. Biol. Med.* **210**, 1–6.
- CHESNEY, R. W. (1985). Taurine: its biological role and clinical implications. *Adv. Pediatr.* **32**, 1–42.
- CHRISTENSEN, H. N. (1990). Role of amino acid transport and counter transport in nutrition and metabolism. *Physiol. Rev.* **70**, 43–77.
- CHRISTENSEN, H. N., HANDLOGTEN, M. E., LAM, I., TAGER, H. S. AND ZAND, R. (1969). A bicyclic amino acid to improve discrimination among transport systems. *J. biol. Chem.* **244**, 1510–1520.
- CHRISTENSEN, H. N., OXENDER, D. L., LIANG, M. AND VATZ, K. A. (1965). The use of N-methylation to direct the route of mediated transport of amino acids. *J. biol. Chem.* **240**, 3609–3616.
- CIOFFI, M. (1979). The morphology and fine structure of the larval midgut of the moth (*Manduca sexta*) in relation to active ion transport. *Tissue & Cell* **11**, 467–479.
- CLOSS, E. I., ALBRITTON, L. M., KIM, J. W. AND CUNNINGHAM, J. M. (1993a). Identification of a low affinity, high capacity transporter of cationic amino acids in mouse liver. *J. biol. Chem.* **268**, 7538–7544.
- CLOSS, E. I., LYONS, C., KELLY, C. AND CUNNINGHAM, J. M. (1993b). Characterization of the third member of the MCAT family of cationic amino acid transporters. *J. biol. Chem.* **268**, 20796–20800.
- COX, D. W., HEADLEY, M. H. AND WATKINS, J. C. (1977). Actions of L- and D-homocysteate in rat CNS: a correlation between low-affinity uptake and the time courses of excitation by microelectroretically applied L-glutamate analogues. *J. Neurochem.* **29**, 579–588.
- CRAWHALL, J. C., SCOWEN, E. F., THOMSON, C. J. AND WATTS, R. W. (1967). The renal clearance of amino acids in cystinuria. *J. clin. Invest.* **46**, 1162–1171.
- CRETZAZ, M., KAHN, C. R. AND FEHLMANN, M. (1983). Glucagon

- regulation of amino acid transport in hepatocytes: effect of cell enucleation. *J. Cell Physiol.* **115**, 186–190.
- DALL'ASTA, V., GAZZOLA, G. C., FRANCHI-GAZZOLA, R., BUSSOLATI, O., LONGO, N. AND GUIDOTTI, G. G. (1983). Pathways of L-glutamic acid transport in cultured human fibroblasts. *J. biol. Chem.* **258**, 6371–6379.
- DANBOLT, N. C., STORM-MATHISEN, J. AND KANNER, B. I. (1992). An $[Na^+K^+]$ coupled L-glutamate transporter purified from rat brain is localized in glial cell processes. *Neuroscience* **51**, 259–310.
- DEVÉS, R., CHAVEZ, P. AND BOYD, C. A. R. (1992). Identification of a new transport system y^+L in human erythrocytes that recognizes lysine and leucine with high affinity. *J. Physiol., Lond.* **454**, 491–501.
- DOW, J. A. T. (1984). Extremely high pH in biological systems: a model for carbonate transport. *Am. J. Physiol.* **246**, R633–R635.
- DOW, J. A. T., GUPTA, B. L., HALL, T. A. AND HARVEY, W. R. (1984). X-ray microanalysis of elements in frozen-hydrated sections of an electrogenic K^+ transport system: the posterior midgut of tobacco hornworm (*Manduca sexta*) in vivo and in vitro. *J. Membr. Biol.* **77**, 223–241.
- DOW, J. A. T. AND PEACOCK, J. M. (1989). Microelectrode evidence for the electrical isolation of goblet cell cavities in *Manduca sexta* middle midgut. *J. exp. Biol.* **143**, 101–114.
- DOYLE, F. A. AND MCGIVAN, J. D. (1992). The bovine renal epithelial cell line NBL-1 expresses a broad specificity Na^+ -dependent neutral amino acid transport system (System B^0) similar to that in bovine renal brush border membrane vesicles. *Biochim. biophys. Acta* **1104**, 55–62.
- DRÖGE, W., ECK, H. P., GMUNDER, H. AND MIHM, S. (1991). Modulation of lymphocyte function and immune responses by cysteine and cysteine derivatives. *Am. J. Med.* **91**, 140S–144S.
- DURING, M. J., RYDER, K. M. AND SPENCER, D. D. (1995). Hippocampal GABA transporter function in temporal-lobe epilepsy. *Nature* **376**, 174–177.
- EAVENSON, E. AND CHRISTENSEN, H. N. (1967). Transport systems for neutral amino acids in the pigeon erythrocyte. *J. biol. Chem.* **242**, 5386–5396.
- EBERT, R. AND CREUTZFELDT, W. (1987). Gastrointestinal peptides and insulin secretion. *Diabetes Metab. Rev.* **3**, 1–26.
- FAIRMAN, W. A., VANDENBERG, R. J., ARRIZA, J. L., KAVANAUGH, M. P. AND AMARA, S. G. (1995). An excitatory amino-acid transporter with properties of a ligand-gated chloride channel. *Nature* **375**, 599–603.
- FEHLMANN, M., LE CAM, A., KITABGI, P., REY, J. F. AND FREYCHET, P. (1979). Regulation of amino acid transport in the liver. Emergence of a high affinity transport system in isolated hepatocytes from fasting rats. *J. biol. Chem.* **254**, 401–407.
- FEL, Y. J., KANAI, Y., NUSSBERGER, S., GANAPATHY, V., LEIBACH, F. H., ROMERO, M. F., SINGH, S. K., BORON, W. F. AND HEDIGER, M. A. (1994). Expression cloning of a mammalian proton coupled oligopeptide transporter. *Nature* **368**, 563–566.
- FEL, Y.-J., PRASAD, P. D., LEIBACH, F. H. AND GANAPATHY, V. (1995). The amino acid transport system y^+L induced in *Xenopus laevis* oocytes by human choriocarcinoma cell (JAR) mRNA is functionally related to the heavy chain of the 4F2 cell surface antigen. *Biochemistry* **34**, 8744–8751.
- FINLEY, K. D., KAKUDA, D. K., BARRIEUX, A., KLEEMAN, J., HUYN, P. D. AND MACLEOD, C. L. (1995). A mammalian arginine/lysine transporter uses multiple promoters. *Proc. natn. Acad. Sci. U.S.A.* **92**, 9378–9382.
- FONNUM, F. (1984). Glutamate: a neurotransmitter in mammalian brain. *J. Neurochem.* **42**, 1–11.
- FREIDMAN, A. W., DIAZ, L. A., JR MOORE, S., SCHALLER, J. AND FOX, D. A. (1994). The human 4F2 antigen: evidence for cryptic and non cryptic epitopes and for a role of 4F2 in human T lymphocyte activation. *Cell. Immunol.* **154**, 253–263.
- FREMEAU, J. R. T., CARON, M. G. AND BLAKELY, R. D. (1992). Molecular cloning and expression of a high affinity L-proline transporter expressed in putative glutamatergic pathways of rat brain. *Neuron* **8**, 915–926.
- FUKUHARA, Y. AND TURNER, R. J. (1985). Cation dependence of renal outer cortical brush border membrane L-glutamate transport. *Am. J. Physiol.* **248**, F869–F875.
- FURRIOLS, M., CHILLARON, J., MORA, C., CASTELLO, A., BERTRAN, J., CAMPS, M., TESTAR, X., VILARO, S., ZORZANO, A. AND PALACIN, M. (1993). rBAT, related to L-cystine transport, is localized to the microvilli of proximal straight tubules and its expression is regulated in kidney by development. *J. biol. Chem.* **268**, 27060–27068.
- GIORDANA, B. AND PARENTI, P. (1994). Determinants for the activity of the neutral amino acid/ K^+ symport in lepidopteran larval midgut. *J. exp. Biol.* **196**, 145–155.
- GIORDANA, B., PARENTI, P., HANOZET, G. M. AND SACCHI, V. F. (1985). Electrogenic potassium-basic amino acid cotransport in the midgut of lepidopteran larvae. *J. Membr. Biol.* **88**, 45–53.
- GIORDANA, B., SACCHI, V. F. AND HANOZET, G. M. (1982). Intestinal amino acid absorption in lepidopteran larvae. *Biochim. biophys. Acta* **692**, 81–88.
- GIORDANA, B., SACCHI, V. F., PARENTI, P. AND HANOZET, G. M. (1989). Amino acid transport systems in intestinal brush membranes from lepidopteran larvae. *Am. J. Physiol.* **257**, R494–R500.
- GIROS, B., EL MESTIKAWY, S., BERTRAND, L. AND CARON, M. G. (1991). Cloning and functional characterization of a cocaine-sensitive dopamine transporter. *FEBS Lett.* **295**, 149–154.
- GUASTELLA, J., NELSON, N., NELSON, H., CZYZYK, L., KEYNAN, S., MIEDEL, M. C., DAVIDSON, N., LESTER, H. A. AND KANNER, B. I. (1990). Cloning and expression of a rat brain GABA transporter. *Science* **249**, 1303–1306.
- GUIMBAL, C., KLOSTERMANN, A. AND KILIMANN, M. W. (1995). Phylogenetic conservation of 4-aminobutyric acid (GABA) transporter isoforms. Cloning and pharmacological characterization of a GABA/beta-alanine transporter from Torpedo. *Eur. J. Biochem.* **234**, 794–800.
- HANDLOGTEN, M. E., BARBER, E. F., BRACY, D. S. AND KILBERG, M. S. (1985). Amino acid-dependent inactivation of glucagon-induced system A transport activity in cultured rat hepatocytes. *Molec. cell. Endocr.* **43**, 61–69.
- HANOZET, G. M., GIORDANA, B., SACCHI, V. F. AND PARENTI, P. (1989). Amino acid transport systems in brush-border membrane vesicles from Lepidoptera. *J. exp. Biol.* **143**, 87–100.
- HANOZET, G. M., SACCHI, V. F., NEDERGAARD, S., BONFANTI, P., MAGAGNIN, S. AND GIORDANA, B. (1992). The K^+ -driven amino acid cotransporter of the larval midgut of lepidoptera: is Na^+ an alternative substrate? *J. exp. Biol.* **162**, 281–294.
- HARVEY, W. R. AND WIECZOREK, H. (1997). Animal plasma membrane energization by chemiosmotic H^+ V-ATPases. *J. exp. Biol.* **200**, 203–216.
- HAYNES, B. F., HEMLER, M. E., MANN, D. L., EISENBARTH, G. S., SHELHAMER, J., MOSTOWSKI, H. S., THOMAS, C. A., STROMINGER, J. L. AND FAUCI, A. S. (1981). Characterization of a monoclonal

- antibody (4F2) that binds to monocytes and to a subset of activated lymphocytes. *J. Immunol.* **126**, 1409–1414.
- HEDIGER, M. A. AND RHOADS, D. B. (1994). Molecular physiology of Na⁺/glucose cotransporters. *Physiol. Rev.* **74**, 993–1026.
- HEINZ, E., SOMMERFELD, D. L. AND KINNE, R. K. (1988). Electrogenicity of sodium/L-glutamate cotransport in rabbit renal brush-border membranes. *Biochim. biophys. Acta* **937**, 300–308.
- HENNIGAN, B. B., WOLFERSBERGER, M. G. AND HARVEY, W. R. (1993a). Neutral amino acid symport in larval *Manduca sexta* brush border membrane vesicles deduced from cation dependent uptake of leucine, alanine and phenylalanine. *Biochim. biophys. Acta* **1148**, 216–222.
- HENNIGAN, B. B., WOLFERSBERGER, M. G., PARTHASARATHY, R. AND HARVEY, W. R. (1993b). Cation dependent leucine, alanine and phenylalanine uptake at pH 10 in brush border membrane vesicles from larval *Manduca sexta* midgut. *Biochim. biophys. Acta* **1148**, 209–215.
- HOFFMAN, B. J., MEZEY, E. AND BROWNSTEIN, M. J. (1991). Cloning of a serotonin transporter affected by antidepressants. *Science* **254**, 579–580.
- ISHII, T., SATO, H., MIURA, K., SAGARA, J.-I. AND BANNAI, S. (1992). Induction of cystine transport activity by stress. *Ann. N.Y. Acad. Sci.* **663**, 497–498.
- JANNE, J., ALHOEN, L. AND LEINONEN, P. (1991). Polyamines: from molecular biology to clinical applications. *Annual Med.* **23**, 241–259.
- JURSKY, F., TAMURA, S., TAMURA, A., MANDIYAN, S., NELSON, H. AND NELSON, N. (1994). Structure, function and brain localization of neurotransmitter transporters. *J. exp. Biol.* **196**, 283–295.
- KANAI, Y. AND HEDIGER, M. A. (1992). Primary structure and functional characterization of a high-affinity glutamate transporter. *Nature* **360**, 467–471.
- KANAI, Y., NUSSBERGER, S., ROMERO, M. F., BORON, W. F., HEBERT, S. H. AND HEDIGER, M. A. (1995). Electrogenic properties of the epithelial and neuronal high affinity glutamate transporter. *J. biol. Chem.* **270**, 16561–16568.
- KANAI, Y., STELZNER, M. G., LEE, W. S., WELLS, R. G., BROWN, D. AND HEDIGER, M. A. (1992). Expression of mRNA (D2) encoding a protein involved in amino acid transport in S3 proximal tubule. *Am. J. Physiol.* **263**, F1087–F1092.
- KANAI, Y., STELZNER, M., NUSSBERGER, S., KHAWAJA, S., HEBERT, S. C. AND HEDIGER, M. A. (1994). The neuronal and epithelial human high affinity glutamate transporter: Insights into structure and mechanism of transport. *J. biol. Chem.* **269**, 20599–20606.
- KANNER, B. I. (1989). Ion-coupled neurotransmitter transport. *Curr. Opin. Cell Biol.* **1**, 735–738.
- KANNER, B. I. (1994). Sodium-coupled neurotransmitter transport: structure, function and regulation. *J. exp. Biol.* **196**, 237–249.
- KAVANAUGH, M. P., WANG, H., ZHANG, Z., ZHANG, W., WU, Y.-N., DECHANT, E., NORTH, R. A. AND KABAT, D. (1994). Control of cationic amino acid transport and retroviral receptor functions in a membrane protein family. *J. biol. Chem.* **269**, 15445–15450.
- KELLEY, D. S., SHULL, J. D. AND POTTER, V. R. (1980). Hormonal regulation of amino acid transport and cyclic AMP production in monolayer cultures of rat hepatocytes. *J. cell. Physiol.* **103**, 159–168.
- KILBERG, M. S., BARBER, E. F. AND HANDLOGTEN, M. E. (1985). Characteristics and hormonal regulation of amino acid transport system A in isolated rat hepatocytes. *Curr. Opin. Cell Reg.* **25**, 133–163.
- KILBERG, M. S., HANDLOGTEN, M. E. AND CHRISTENSEN, H. N. (1980). Characteristics of an amino acid transport system in rat liver for glutamine, asparagine, histidine and closely related analogs. *J. biol. Chem.* **255**, 4011–4019.
- KILBERG, M. S. AND HÄUSSINGER, D. (1992). (eds) *Mammalian Amino Acid Transport. Mechanisms and Control*. New York: Plenum Press.
- KILBERG, M. S., STEVENS, B. R. AND NOVAK, D. A. (1993). Recent advances in mammalian amino acid transport. *A. Rev. Nutr.* **13**, 137–165.
- KILTY, J. E., LORANG, D. AND AMARA, S. G. (1991). Cloning and expression of a cocaine-sensitive rat dopamine transporter. *Science* **254**, 578–579.
- KIM, J. W., CLOSS, E. I., ALBRITTON, L. M. AND CUNNINGAM, J. M. (1991). Transport of cationic amino acids by the ecotropic virus receptor. *Nature* **352**, 725–728.
- KLÖCKNER, U., STORCK, T., CONRADT, M. AND STOFFEL, W. (1993). Electrogenic L-glutamate uptake in *Xenopus laevis* oocytes expressing a cloned rat brain L-glutamate/L-aspartate transporter (GLAST-1). *J. biol. Chem.* **268**, 14594–14596.
- KNIGHT, P. J., CRICKMORE, N. AND ELLAR, D. J. (1994). The receptor for *Bacillus thuringiensis* CryIA(c) delta endotoxin in the brush border membrane of the lepidopteran *Manduca sexta* is aminopeptidase N. *Molec. Microbiol.* **11**, 429–436.
- KNIGHT, P. J., KNOWLES, B. H. AND ELLAR, D. J. (1995). Molecular cloning of an insect aminopeptidase N that serves as a receptor for *Bacillus thuringiensis* CryIA(c) toxin. *J. biol. Chem.* **270**, 17765–17770.
- LE CAM, A. AND FREYCHET, P. (1978). Effect of insulin on amino acid transport in isolated rat hepatocytes. *Diabetologia* **15**, 117–123.
- LEHRE, K., LEVY, L., OTTERSEN, O., STORM-MATHISEN, J. AND DANBOLT, N. (1995). Differential expression of the two glial glutamate transporters in the rat brain: quantitative and immunocytochemical observation. *J. Neurosci.* **15**, 1835–1853.
- LEPIER, A., AZUMA, M., HARVEY, W. R. AND WIECZOREK, H. (1994). K⁺/H⁺ antiport in the tobacco hornworm midgut: the K⁺ component of the K⁺ pump. *J. exp. Biol.* **196**, 361–373.
- LERNER, J. (1987). Acidic amino acid transport in animal cells and tissues. *Comp. Biochem. Physiol.* **87B**, 443–457.
- LIN, G., MCCORMICK, J. I. AND JONSTONE, R. M. (1994). Differentiation of two classes of 'AA' system amino acid transporters. *Archs Biochem. Biophys.* **312**, 308–315.
- LIU, Q. R., LÓPEZ-CORCUERA, B., MANDIYAN, S., NELSON, H. AND NELSON, N. (1993). Cloning and expression of a spinal cord- and brain-specific glycine transporter with novel structural features. *J. biol. Chem.* **268**, 2106–2112.
- LIU, Q. R., NELSON, H., MANDIYAN, S., LÓPEZ-CORCUERA, B. AND NELSON, N. (1992). Cloning and expression of a glycine transporter from mouse brain. *FEBS Lett.* **305**, 110–114.
- LIU, Z. AND HARVEY, W. R. (1996a). Arginine uptake through a novel cationic amino acid:K⁺ symporter, system R⁺, in brush border membrane vesicles from larval *Manduca sexta* midgut. *Biochim. biophys. Acta* **1282**, 25–31.
- LIU, Z. AND HARVEY, W. R. (1996b). Cationic lysine uptake by system R⁺ and zwitterionic lysine uptake by system B in brush border membrane vesicles from larval *Manduca sexta* midgut. *Biochim. biophys. Acta* **1282**, 32–38.
- LOO, D. D. F., HAZAMA, A., SUPPLISSON, S., TURK, E. AND WRIGHT, E. M. (1993). Relaxation kinetics of the Na⁺/glucose cotransporter. *Proc. natn. Acad. Sci. U.S.A.* **90**, 5767–5771.
- LÓPEZ-CORCUERA, B., LIU, Q. R., MANDIYAN, S., NELSON, H. AND NELSON, N. (1992). Expression of a mouse brain cDNA encoding

- novel γ -amino-butyric acid transporter. *J. biol. Chem.* **267**, 17491–17493.
- LYNCH, A. M. AND MCGIVAN, J. D. (1987). Evidence of a single common Na^+ -dependent transport system for alanine, glutamine, leucine and phenylalanine in brush border membrane vesicles from bovine kidney. *Biochim. biophys. Acta* **899**, 176–184.
- MABJEESH, N. J., FRESE, M., RAUEN, T., JESERICH, G. AND KANNER, B. I. (1992). Neuronal and glial gamma-aminobutyric acid transporters are distinct proteins. *FEBS Lett.* **299**, 99–102.
- MAENZ, D. D. AND PATIENCE, J. F. (1992). L-Threonine transport in pig jejunal brush border membrane vesicles. Functional characterization of the unique System B in the intestinal epithelium. *J. biol. Chem.* **267**, 22079–22086.
- MAGER, S., NAEVE, J., QUICK, M., LABARCA, C., DAVIDSON, N. AND LESTER, H. A. (1993). Steady states, charge movements and rates for a cloned GABA transporter expressed in *Xenopus* oocytes. *Neuron* **10**, 177–188.
- MAKOWSKA, M. AND CHRISTENSEN, H. N. (1982). Hepatic transport system interconverted by protonation from service for neutral to service for anionic amino acids. *J. biol. Chem.* **257**, 14635–14638.
- MBUNGU, D., ROSS, L. S. AND GILL, S. S. (1995). Cloning, functional expression and pharmacology of a GABA transporter from *Manduca sexta*. *Archs Biochem. Biophys.* **318**, 489–497.
- MEISTER, A. (1988). Glutathione metabolism and its selective modification. *J. biol. Chem.* **263**, 17205–17208.
- MIHM, S. AND DRÖGE, W. (1990). Intracellular glutathione level controls DNA-binding activity of NfkB-like proteins. *Immunobiology* **181**, 245–251.
- MIHM, S., ENNEN, J., PESSARA, U., KURTH, R. AND DRÖGE, W. (1991). Inhibition of HIV-1 replication and NF-kappa B activity by cysteine and cysteine derivatives. *AIDS* **5**, 497–503.
- MIRCHEFF, A. K., KIPPEN, I., HIRAYAMA, B. AND WRIGHT, E. M. (1982). Delineation of sodium-stimulated amino acid transport pathways in rabbit kidney brush border vesicles. *J. Membr. Biol.* **64**, 113–122.
- MIYAMOTO, K., KATAI, K., TATSUMI, S., SONE, K., SEGAWA, H., YAMAMOTO, H., TAKETANI, Y., TAKADA, K., MORITA, K., KANAYAMA, H., KAGAWA, S. AND TAKEDA, E. (1995). Mutations of the basic amino acid transporter gene associated with cystinuria. *Biochem. J.* **310**, 951–955.
- MIYAMOTO, Y., NAKAMURA, H., HOSHI, T., GANAPATHY, V. AND LEIBACH, F. H. (1990). Uphill transport of β -alanine in intestinal brush-border membrane vesicles. *Am. J. Physiol.* **259**, G372–G379.
- MONCADA, S. (1994). Nitric oxide. *J. Hypertension* **12**, S35–S39.
- MONCADA, S. AND HIGGS, A. (1993). The L-arginine–nitric oxide pathway. *New Engl. J. Med.* **329**, 2002–2012.
- MUNCK, L. K. AND MUNCK, B. G. (1994). Amino acid transport in the small intestine. *Physiol. Res.* **43**, 335–345.
- MUSLEH, W. Y., SHAHI, K. AND BAUDRY, M. (1993). Further studies concerning the role of nitric oxide in LTP induction and maintenance. *Synapse* **13**, 370–375.
- NADLER, J. V., WANG, A. AND HAKIM, A. (1988). Toxicity of L-proline toward rat hippocampal neurons. *Brain Res.* **456**, 168–172.
- NELSON, H., MANDIYAN, S. AND NELSON, N. (1990). Cloning of the human brain GABA transporter. *FEBS Lett.* **269**, 181–184.
- NICHOLLS, D. AND ATTWELL, D. (1990). The release and uptake of excitatory amino acids. *Trends pharmac. Sci.* **11**, 462–468.
- NUSSBERGER, S., FORET, F., HEBERT, S. C., KARGER, B. L. AND HEDIGER, M. A. (1996). Non-radioactive monitoring of organic solute transport into single *Xenopus* oocytes by capillary zone electrophoresis. *Biophys. J.* **70**, 998–1005.
- OHGIMOTO, S., TABATA, N., SUGA, S., NISHIO, M., OHTA, H., TSURUDOME, M., KOMADA, H., KAWANO, M., WATANABE, N. AND ITO, Y. (1995). Molecular characterization of fusion regulatory protein-1 (FRP-1) that induces multinucleated giant cell formation of monocytes and HIV gp-160-mediated cell fusion. FRP-1 and 4F2/CD/8 are identical molecules. *J. Immunol.* **155**, 3585–3592.
- ORRENIUS, S., ORMSTAD, K., THOR, H. AND JEWELL, S. A. (1983). Turnover and functions of glutathione studies with isolated hepatic and renal cells. *Fedn Proc. Fedn Am. Socs exp. Biol.* **42**, 3177–3188.
- OTTERSEN, O. P. AND STORM-MATHISEN, J. (1984). Neurons containing or accumulating transmitter amino acids. In *Handbook of Chemical Neuroanatomy*, vol. 3, *Classical Transmitters and Transmitter receptors in the CNS*, part II (ed. A. Bjorklund, T. Hokfelt and M. J. Kuhar), pp. 141–246. Amsterdam: Elsevier.
- OTTERSEN, O. P., ZHANG, N. AND WALBERG, F. (1992). Metabolic compartmentation of glutamate and glutamine: morphological evidence obtained by quantitative immunocytochemistry in rat cerebellum. *Neuroscience* **46**, 519–534.
- PACHOLCZYK, T., BLAKELY, R. D. AND AMARA, S. G. (1991). Expression cloning of a cocaine- and antidepressant-sensitive human noradrenaline transporter. *Nature* **350**, 350–354.
- PALACIN, M., WERNER, A., DITTMER, J., MURER, H. AND BIBER, J. (1990). Expression of rat liver Na^+ /L-alanine co-transport in *Xenopus laevis* oocytes. Effect of glucagon in vivo. *Biochem. J.* **270**, 189–195.
- PARDRIDGE, W. M. AND OLDENDORF, W. H. (1977). Transport of metabolic substrates through the blood–brain barrier. *J. Neurochem.* **28**, 5–12.
- PARENTI, P., VILLA, M. AND HANOZET, G. M. (1992). Kinetics of leucine transport in brush border membrane vesicles from lepidopteran larvae midgut. *J. biol. Chem.* **267**, 15391–15397.
- PARENTI, P., VILLA, M., HANOZET, G. M., TASCIA, M. AND GIORDANA, B. (1995). Interaction of the insecticidal crystal protein CryIA from *Bacillus thuringiensis* with amino acid transport into brush border membranes from *Bombyx mori* larval midgut. *J. Invertebr. Path.* **65**, 35–42.
- PARIZA, M. W., BUTCHER, F. R., KLETZIEN, R. F., BECKER, J. E. AND POTTER, V. R. (1976). Induction and decay of glucagon-induced amino acid transport in primary cultures of adult rat liver cells: paradoxical effects of cycloheximide and puromycin. *Proc. natn. Acad. Sci. U.S.A.* **73**, 4511–4515.
- PARMACECK, M. S., KARPINSKI, B. A., GOTTESDIENER, K. M., THOMPSON, C. B. AND LEIDEN, J. M. (1989). Structure, expression and regulation of the murine 4F2 heavy chain. *Nucleic Acids Res.* **17**, 1915–1931.
- PARTHASARATHY, R. AND HARVEY, W. R. (1994). Potential differences influence amino acid/ Na^+ symport rates in larval *Manduca sexta* midgut brush-border membrane vesicles. *J. exp. Biol.* **189**, 55–67.
- PETRONINI, P. G., DE ANGELIS, E. M., BORGHETTI, P., BORCHETTI, A. F. AND WHEELER, K. P. (1992). Modulation by betaine of cellular responses to osmotic stress. *Biochem. J.* **282**, 69–73.
- PINES, G., DANBOLT, N. C., BJORAS, M., ZHANG, Y., BENDAHAN, A., EIDE, L., KOESELL, H., STORM-MATHISEN, J., SEEBERG, E. AND KANNER, B. I. (1992). Cloning and expression of a rat brain L-glutamate transporter. *Nature* **360**, 464–467.
- PIPELEERS, D. G., SCHUIT, F. C., IN'T VELD, P. A., MAES, E., HOOGHE-PETERS, E. L., VAN DE WINKEL, M. AND GEPTS, W. (1985a). Interplay of nutrients and hormones in the regulation of insulin release. *Endocrinology* **117**, 824–833.

- PIPELEERS, D. G., SCHUIT, F. C., VAN SCHRAVENDIJK, C. F. AND VAN DE WINKEL, M. (1985b). Interplay of nutrients and hormones in the regulation of glucagon release. *Endocrinology* **117**, 817–823.
- PLAKIDOU-DYMOCK, S., TANNER, M. J. AND MCGIVAN, J. D. (1993). A role for aminopeptidase N in Na⁺-dependent amino acid transport in bovine renal brush border membranes. *Biochem. J.* **290**, 59–65.
- RADIAN, R., OTTERSEN, O. P., STORM-MATISEN, J., CASTEL, M. AND KANNER, B. I. (1990). Immunocytochemical localization of the GABA transporter in rat brain. *J. Neurosci.* **10**, 1319–1330.
- RAJANTIE, J., SIMEL, O. AND PERHEENTUPA, J. (1980). Intestinal absorption of lysinuric protein intolerance: impaired for diamino acids, normal for citrulline. *Gut* **21**, 519–524.
- RAJANTIE, J., SIMEL, O. AND PERHEENTUPA, J. (1981). Lysinuric protein intolerance. Basolateral transport defect in renal tubule. *J. clin. Invest.* **67**, 1078–1082.
- REUVENI, M., HONG, Y. S., DUNN, P. E. AND NEAL, J. J. (1993). Leucine transport into brush border membrane vesicles from guts of *Leptinotarsa decemlineata* and *Manduca sexta*. *Comp. Biochem. Physiol.* **104A**, 267–272.
- ROTHSTEIN, J., MARTIN, L., LEVEY, A., DYKES-HOBERG, M., JIN, L., WU, D., NASH, N. AND KUNKL, R. (1994). Localization of neuronal and glial glutamate transporters. *Neuron* **13**, 713–725.
- SACCHI, V. F., GIORDANA, B., CAMPANINI, F., BONFANTI, P. AND HANOZET, G. M. (1990). Leucine uptake in brush-border membrane vesicles from the midgut of a lepidopteran larva, *Philosamia cynthia*. *J. exp. Biol.* **149**, 207–221.
- SACCHI, V. F., PARENTI, P., PEREGO, C. AND GIORDANA, B. (1994). Interaction between Na⁺ and the K⁺-dependent amino acid transport in midgut brush border membranes vesicles from *Philosamia cynthia* larvae. *J. Insect Physiol.* **40**, 69–74.
- SACCHI, V. F., PEREGO, C. AND MAGAGNIN, S. (1995). Functional characterization of leucine transport induced in *Xenopus laevis* oocytes injected with mRNA isolated from midguts of lepidopteran larvae (*Philosamia cynthia*). *J. exp. Biol.* **198**, 961–966.
- SAGARA, J.-I., MIURA, K. AND BANNAI, S. (1993). Maintenance of neuronal glutathione by glial cells. *J. Neurochem.* **61**, 1672–1676.
- SANGADALA, S., WALTERS, F., ENGLISH, L. AND ADANG, M. J. (1994). A mixture of *Manduca sexta* aminopeptidase and phosphatase enhances *Bacillus thuringiensis* insecticidal CryIA(c) toxin binding and Rb⁺-K⁺ efflux *in vitro*. *J. biol. Chem.* **269**, 10088–10092.
- SARANTIS, M. AND ATTWELL, D. (1990). Glutamate uptake in mammalian retinal glia is voltage- and potassium-dependent. *Brain Res.* **516**, 322–325.
- SCHOUSBOE, A. (1981). Transport and metabolism of glutamate and GABA in neurons and glial cells. *Int. Rev. Neurobiol.* **22**, 1–45.
- SEGAL, S. AND THIER, S. O. (1995). Cystinuria. In *The Metabolic and Molecular Bases of Inherited Disease*, vol. 3, chapter 117 (ed. C. R. Scriver, A. L. Beaudet, W. S. Sly and D. Valle), pp. 3581–3601. New York, USA: McGraw-Hill, Inc.
- SEGEL, G. B., SIMON, W. AND LICHTMAN, M. A. (1984). Multicomponent analysis of amino acid transport in human lymphocytes. *J. clin. Invest.* **74**, 17–24.
- SHAFQAT, S., TAMARAPPOO, B. K., KILBERG, M. S., PURANAM, R. S., MCNAMARA, J. O., GUADANO-FERRAZ, A. AND FREMEAU, R. T. J. (1993). Cloning and expression of a novel Na⁺-dependent neutral amino acid transporter structurally related to mammalian Na⁺/glutamate cotransporters. *J. biol. Chem.* **268**, 15351–15355.
- SHAFQAT, S., VELAZ-FAIRCLOTH, M., HENZI, V. A., WHITNEY, K. D., YANG-FENG, T. L., SELDIN, M. F. AND FREMEAU, R. T. J. (1995). Human brain-specific L-proline transporter: molecular cloning, functional expression and chromosomal localization of the gene in human and mouse genomes. *Molec. Pharmacol.* **48**, 219–229.
- SHIMADA, S., KITAYAMA, S., LIN, C. L., PATEL, A., NANTHAKUMAR, E., GREGOR, P., KUCHAR, M. AND UHL, G. (1991). Cloning and expression of a cocaine-sensitive dopamine transporter complementary DNA. *Science* **254**, 576–578.
- SHOTWELL, M. A., KILBERG, M. S. AND OXENDER, D. L. (1983). The regulation of neutral amino acid transport in mammalian cells. *Biochim. biophys. Acta* **737**, 267–284.
- SIMELL, O. (1989). Lysinuric protein intolerance and other cationic amino acidurias. In *The Metabolic Basis of Inherited Disease*, vol. 2, chapter 100 (ed. C. R. Scriver, A. L. Beaudet, W. S. Sly and D. Valle), pp. 2497–2512. New York, USA: McGraw-Hill, Inc.
- SINGH, R. K. AND SIEGAL, G. P. (1995). Amino acid transport systems modulate human tumor cell growth and invasion: a working hypothesis. *Med. Hypothesis* **44**, 195–201.
- SOLER, C., FELIPE, A., CASADO, F. J., MCGIVAN, J. D. AND PASTOR-ANGLADA, M. (1993). Hyperosmolarity leads to an increase in derepressed system A activity in the renal epithelial cell line NBL-1. *Biochem. J.* **289**, 653–658.
- SOMOHANO, F. AND LOPEZ-COLOME, A. M. (1995). Characteristics of excitatory amino acid uptake in cultures from neurons and glia from the retina. *J. Neurosci. Res.* **28**, 556–562.
- SONE, M., ALBRECHT, G. J., DORGE, A., THURAU, K. AND BECK, F. X. (1993). Osmotic adaptation of renal medullary cells during transition from chronic diuresis to antidiuresis. *Am. J. Physiol.* **264**, F722–F729.
- STEVENS, B. R., KAUNIZ, J. D. AND WRIGHT, E. M. (1984). Intestinal transport of amino acids and sugars: advances using membrane vesicles. *A. Rev. Physiol.* **46**, 417–433.
- STEVENS, B. R. (1992). Amino acid transport in intestine. In *Mammalian Amino Acid Transport. Mechanisms and Control* (M. S. Kilberg and D. Häussinger), pp. 149–163. New York: Plenum Press.
- STEVENS, B. R. AND WRIGHT, E. M. (1985). Substrate specificity of the intestinal brush-border proline/sodium (IMINO) transporter. *J. Membr. Biol.* **87**, 27–34.
- STORCK, T., SCHULTE, S., HOFMANN, K. AND STOFFEL, W. (1992). Structure, expression and functional analysis of a Na⁺-dependent glutamate/aspartate transporter from rat brain. *Proc. natn. Acad. Sci. U.S.A.* **89**, 10955–10959.
- STORM-MATHISEN, J., DANBOLT, N. C., ROTHE, F., TORP, R., ZHANG, N., AAS, J. E., KANNER, B. I., LANGMOEN, I. AND OTTERSEN, O. P. (1992). Ultrastructural immunocytochemical observations on the localization, metabolism and transport of glutamate in normal and ischemic brain tissue. *Prog. Brain Res.* **94**, 225–241.
- SU, T. Z., LUNNEY, E., CABELL, G. AND OXENDER, D. L. (1995). Transport of gabapentin, a gamma-amino acid drug, by system L alpha amino acid transporters: a comparative study in astrocytes, synaptosomes and CHO cells. *J. Neurochem.* **64**, 2125–2131.
- TARNUZZER, R. W., CAMPA, M. J., QIAN, N. X., ENGESBERG, E. AND KILBERG, M. S. (1990). Expression of the mammalian system A neutral amino acid transporter in *Xenopus* oocytes. *J. biol. Chem.* **265**, 13914–13917.
- TATE, N. U., ENDOU, H. AND KANAI, Y. (1996). Cloning and functional characterization of a system ASC-like Na⁺-dependent neutral amino acid transporter. *J. biol. Chem.* **271**, 14883–14890.
- TATE, S. S., YAN, N. AND UDENFRIEND, S. (1992). Expression cloning of a Na⁺-independent neutral amino acid transporter from rat kidney. *Proc. natn. Acad. Sci. U.S.A.* **89**, 1–5.
- THWAITES, D. T., MCEWAN, G. T., COOK, M. J., HIRST, B. H. AND

- SIMMONS, N. L. (1993). H⁺-coupled (Na⁺-independent) proline transport in human intestinal (Caco-2) epithelial cell monolayers. *FEBS Lett.* **333**, 78–82.
- TROTTI, D., ROSSI, D., GJESDAL, O., LEVY, L. M., RACAGNI, G., DANBOLT, N. C. AND VOLTERRA, A. (1996). Peroxynitrite inhibits glutamate transporter subtypes. *J. biol. Chem.* **271**, 5976–5979.
- TROTTI, D., VOLTERRA, A., LEHRE, K., ROSSI, D., GJESDAL, O., RACAGNI, G. AND DANBOLT, N. (1995). Arachidonic acid inhibits a purified and reconstituted glutamate transporter directly from the water phase and not *via* the phospholipid membrane. *J. biol. Chem.* **270**, 9890–9895.
- UCHIDA, S., MOO-KWON, H. AND YAMAUCHI, A. (1992). Molecular cloning of the cDNA for an MDCK cell Na⁺ and Cl⁻-dependent taurine transporter that is regulated by hypertonicity. *Proc. natn. Acad. Sci. U.S.A.* **89**, 8230–8234.
- VADGAMA, J. V. AND CHRISTENSEN, H. N. (1984). Wide distribution of pH-dependent service of transport system ASC for both anionic and zwitterionic amino acids. *J. biol. Chem.* **259**, 3648–3652.
- VAN WINKLE, L. J. (1988). Amino acids transport in developing animal oocytes and early conceptuses. *Biochim. biophys. Acta* **947**, 173–208.
- VAN WINKLE, L. J. (1993). Endogenous amino acid transport systems and expression of mammalian amino acid transport proteins in *Xenopus* oocytes. *Biochim. biophys. Acta* **1154**, 157–172.
- VAN WINKLE, L. J., CHRISTENSEN, H. N. AND CAMPIONE, A. L. (1985). Na⁺-dependent transport of basic, zwitterionic, and bicyclic amino acids by a broad-scope system in mouse blastocysts. *J. biol. Chem.* **260**, 12118–12123.
- VERITY, M. A. (1994). Oxidative damage and repair in the developing nervous system. *Neurotoxicology* **15**, 81–92.
- VOLTERRA, A., TROTTI, D., CASSUTTI, P., TROMBA, C., SALVAGGIO, A., MELCANGI, R. AND RACAGNI, G. (1992). High sensitivity of glutamate uptake to extracellular free arachidonic acid levels in rat cortical synaptosomes and astrocytes. *J. Neurochem.* **59**, 600–606.
- VOLTERRA, A., TROTTI, D., TROMBA, C., FLORIDI, S. AND RACAGNI, G. (1994). Glutamate uptake inhibition by oxygen free radicals in rat cortical astrocytes. *J. Neurosci.* **14**, 2924–2932.
- WADICHE, J. I., AMARA, S. G. AND KAVANAUGH, M. P. (1995a). Ion fluxes associated with excitatory amino acid transport. *Neuron* **15**, 721–728.
- WADICHE, J. I., ARRIZA, J. L., AMARA, S. G. AND KAVANAUGH, M. P. (1995b). Kinetics of a human glutamate transporter. *Neuron* **14**, 1019–1027.
- WANG, H., KAVANAUGH, M., NORTH, R. AND KABAT, D. (1991). Cell-surface receptor for ecotropic murine retrovirus is a basic amino acid transporter. *Nature* **352**, 729–731.
- WANG, Y. AND TATE, S. S. (1995). Oligomeric structure of a renal cystine transporter: implications in cystinuria. *FEBS Lett.* **368**, 389–392.
- WEISSBACH, L., HANDLOFTEN, M. E., CHRISTENSEN, H. N. AND KILBERG, M. S. (1982). Evidence for two Na⁺-independent neutral amino acid transport systems in primary cultures of rat hepatocytes. *J. biol. Chem.* **257**, 12006–12011.
- WELLS, R. G. AND HEDIGER, M. A. (1992). Cloning of a rat kidney cDNA that stimulates dibasic and neutral amino acid transport and has sequence similarity to glucosidases. *Proc. natn. Acad. Sci. U.S.A.* **89**, 5596–5600.
- WHELAN, D. T. AND SCRIVER, C. R. (1968). Hyperdibasicaminoaciduria: an inherited disorder of amino acid transport. *Pediatric Res.* **2**, 525–534.
- WHITE, M. (1985). The transport of cationic amino acids across the plasma membrane of mammalian cells. *Biochim. biophys. Acta* **822**, 4450–4457.
- WIECZOREK, H., PUTZENLECHNER, M., ZEISKE, W. AND KLEIN, U. (1991). A vacuolar-type proton pump energizes K⁺/H⁺ antiport in an animal plasma membrane. *J. biol. Chem.* **266**, 15340–15347.
- WINGROVE, T. G. AND KIMMICH, G. A. (1988). Low-affinity intestinal L-aspartate transport with 2:1 coupling stoichiometry for Na⁺/Asp. *Am. J. Physiol.* **255**, C737–C744.
- WOLFERSBERGER, M. G. (1991). Inhibition of potassium gradient driven phenylalanine uptake in *Lymantria dispar* midgut by two *Bacillus thuringiensis* delta-endotoxins correlates with the activity of the toxins as gypsy moth larvicides. *J. exp. Biol.* **161**, 519–525.
- WOODARD, M. H., DUNN, W. A., LAINE, R. O., MALANDRO, M., MCMAHON, R., SIMELL, O., BLOCK, E. R. AND KILBERG, M. S. (1994). Plasma membrane clustering of system y⁺ cationic amino acid transporter as detected by immunohistochemistry. *Am. J. Physiol.* **266**, E817–E824.
- XIE, T., PARTHASARATHY, R., WOLFERSBERGER, M. G. AND HARVEY, W. R. (1994). Anomalous glutamate/alkali cation symport in larval *Manduca sexta* midgut. *J. exp. Biol.* **194**, 181–194.
- YAGITA, H., MASUKO, T. AND HASHIMOTO, Y. (1986). Inhibition of tumor cell growth *in vitro* by murine monoclonal antibodies that recognize a proliferation associated cell surface antigen system in rats and humans. *Cancer Res.* **46**, 1478–1484.
- YAMAUCHI, A., UCHIDA, S., KWON, H. M., PRESTON, A. S., ROBEY, R. B., GARCIA-PEREZ, A., BURG, M. B. AND HANDLER, J. S. (1992). Cloning of a Na⁺- and Cl⁻-dependent betaine transporter that is regulated by hypertonicity. *J. biol. Chem.* **267**, 649–652.
- ZERANGUE, N., ARRIZA, J. L., AMARA, S. G. AND KAVANAUGH, M. P. (1995). Differential modulation of human glutamate transporter subtypes by arachidonic acid. *J. biol. Chem.* **270**, 6433–6435.