

Erratum

Cousins, K. L., Farrell, A. P., Sweeting, R. M., Vesely, D. L. and Keen, J. E. (1997). Release of atrial natriuretic factor prohormone peptides 1-30, 31-67 and 99-126 from freshwater- and seawater-acclimated perfused trout (*Oncorhynchus mykiss*) hearts. *J. Exp. Biol.* **200**, 1351–1362.

Fig. 7 of this article was incorrect. The correct figure is shown below. The authors wish to apologise for any inconvenience this error may have caused.

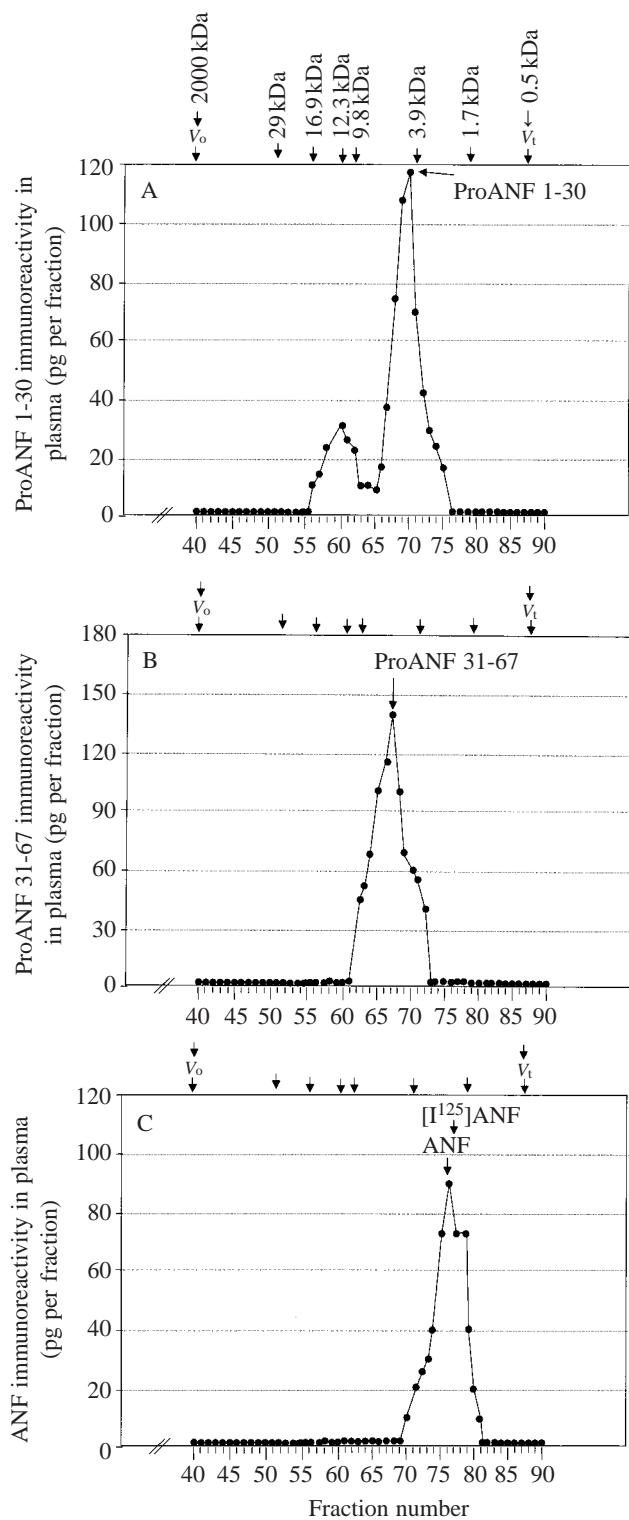


Fig. 7. (A) Evidence that proANF 1-30 exists as a separate entity in trout plasma when plasma is subjected to high-performance gel-permeation chromatography followed by proANF 1-30 radioimmunoassay. In the evaluation of trout plasma, two peaks were seen. One of these, at approximately 9800 Da, was consistent with proANF 1-98, while a second peak at fractions 68–71 was seen in the region where the pure synthetic form of proANF 1-30 (arrow) elutes. (B) ProANF 31-67 exists in trout plasma as a distinct peptide. This elution of proANF 31-67 from plasma was identical with the elution of the pure human synthetic form of proANF 31-67. (C) Atrial natriuretic factor exists as a separate entity in trout plasma. This peak in trout plasma was identical with the elution of pure synthetic human sequence of ANF (arrow). V_0 , void volume of column; V_t , total volume of column. Fraction size was 0.3 ml.