

5' AAGCGAAGCGT~~G~~CGAGATAAAGATCGCCACAT

ATG GAT CCC ATA AAC GGA TCC CAT AGC GGG GCG AAC GCG ACC ATC TCC GAT ATC ACA AAT 60
 M D P I N G S H S G A N A T I S D I T N
 GGC GCG TAC AAC GCC ACG GAC GCT GGC GAG TGG ACC AGC AGC GTC ATG TTC AAG CTG CCG 120
 G A Y N A T D A G E W T S S V M F K L R
 ACC TGC GTG CTG CTG CTC ATC GTC ATC ATG GCG GTG CTC GGC AAC ATG CTC GTC ATT GTC 180
 T C V L L L I V I M A V L G N M L V I V
 AGT GTT ATG AGG CAC AGG AAA CFC CGT GTC ATC ACC AAC TAC TTC GTC GTC TCC CTT GCG 240
 S V M R H R K L R V I T N Y F V V S L A
 TTT GCT GAC AIT CTC GTC GCG ATG GTG GIT ATG CCC TTC AAC TTC AGC GTG CAA TTC AAC 300
 F A D I L V A M V V M P F N F S V Q F N
 CAG GCG TGG GTC TTT GGG GAG ACG AIT TGT GAC CTC TGG AAC TCT TCC GAT GIT TAT TTT 360
 Q G W V F G E T I C D L W N S S D V Y F
 ACA TCA ACG TCC ATA CTC CAC CTC TGC TGC ATA TCC GTG GAT AGG TAT TAT GCC ATC GTG 420
 T S T S I L H L C C I S V D R Y Y A I V
 AAG CCG TTG AAG TAC CCC ATC AAG ATG ACA AAG AAG ATG GCG TTT GTG ATG TTA GCA GCG 480
 K P L K Y P I K M T K K M A F V M L A A
 ACG TGG TTG AGT CCA ATC ACA ATA TCT TAC GTC CCA ATA TTC ATG GGA TGG TAC ACA ACC 540
 T W L S P I T I S Y V P I F M G W Y T T
 ACA GAT TTT CTA GAG AGT CGC AGA GAC GAT CAG TGT GAG TTC AAA GIG AAC AAA CCT TAC 600
 T D F L E S R R D D Q C E F K V N K P Y
 GCA GTG ATA TCT AGC TCC ATA TCA TTC TGG ATA CCT TGC ACC ATC ATG ATA TTT ACG TAC 660
 A V I S S S I S F W I P C T I M I F T Y
 TTA GCG AIT TTC AAG GAG GCC AAC AGA CAG GAG AAG GCG TTG CAC GCT AGA GCC GCG AAC 720
 L A I F K E A N R Q E K A L H A R A G N
 GCC ATG TTG ATG CAC AGA CAT TCT AGA GAA GTG AGC GAT AAA AAT GGT GCA CTA CAT ATA 780
 A M L M H R H S R E V S D K N G A L H I
 AAC GCC ACC ACC CCA ACC AAA GAT AGA AAT TTA TTG AAG ATG AAG AGG GAG CAC AAA GCA 840
 N A T T P T K D R N L L K M K R E H K A
 GCC AGA ACT TTG GGA ATC ATC ATG GGA GCA TTC ATA CTT TGC TGG CTG CCA TTC TTC CTC 900
 A R T L G I I M G A F I L C W L P F F L
 TAC TAT GTG TCA ACA TCA TTG TGT GAC TCG TGC AAT TGC CCA GAA GTA GTG ACA GTG ATA 960
 Y Y V S T S L C D S C N C P E V V T V I
 ATG TTT TGG ACT GGG TAC TTC AAT TCC GCG TTG AAC CCT ATA ATA TAC GCG TAC TTT AAT 1020
 M F W T G Y F N S A L N P I I Y A Y F N
 AGA GAC TTT CGT AAT GCT TTT AAA AAT ACA TTA GCT TGC GCG TTC TGT AGT TTC TGC AAG 1080
 R D F R N A F K N T L A C A F C S F C K
 CGT AGT GCG TCA GAT TTA GAT GCA ATG GAA CGA TTA GAT AGA AGA GGA TOC GCG CAA CTG 1140
 R S A S D L D A M E R L D R R G S A Q L
 AGA GTG CCG ATA CCT TCG AGA AGA GCA TCG GAT TTG GCG TCG CTT TGA
 R V P I P S R R A S D L A S L *
 ACTTCGAGCGAAACAATAGCCAGCCGTTTGAGG 3'

Fig.S.1

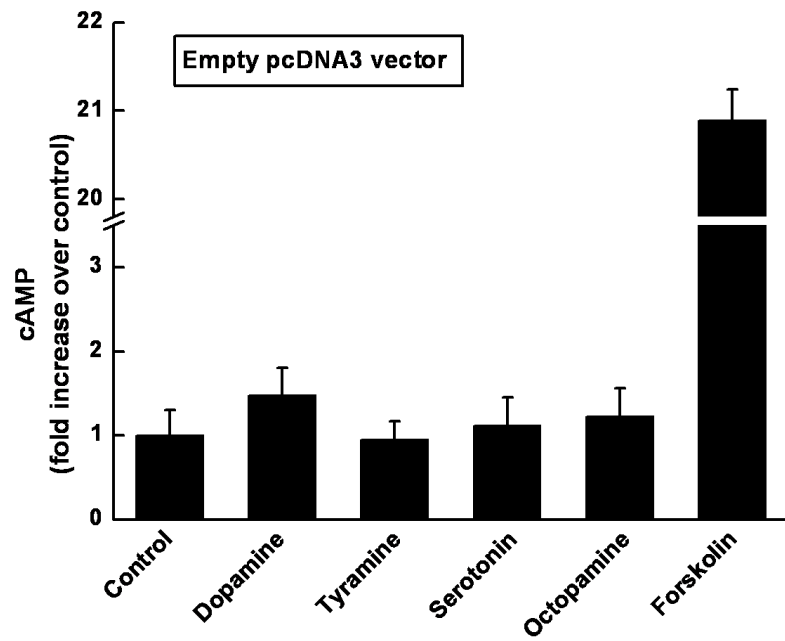


Fig.S.2

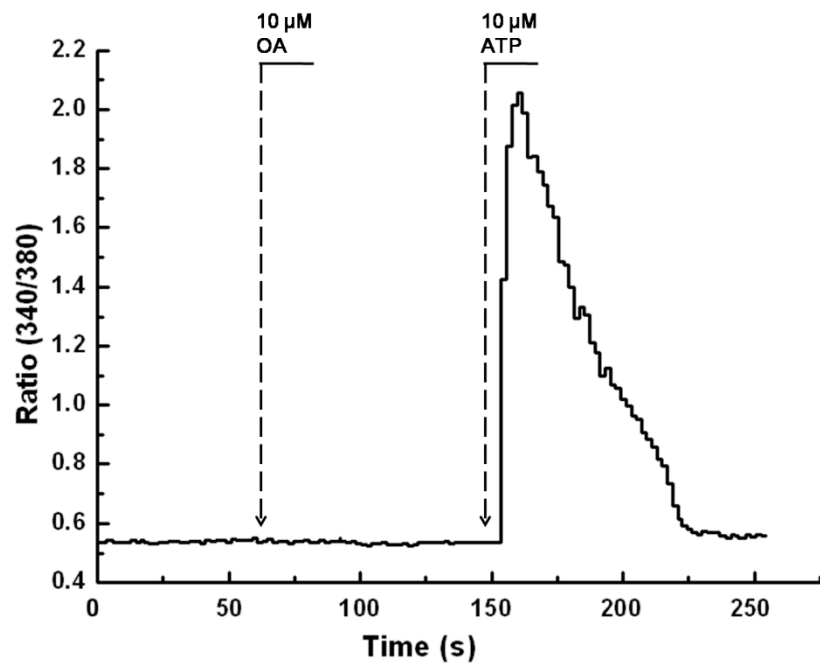


Fig.S.3