

Fig. S1. Time series of the fate of egg masses that settled on the bottom of the tank. Arrows indicate the border of the egg masses. (A) Day 1; egg mass is nearly spherical (B) Day 2; egg mass collapses and is ellipsoid (C) Day 3; egg mass collapses further and the nidamental gland jelly layer is damaged (D) Day 4; collapsed egg mass is almost flattened (E) Day 5; enlarged view of the egg mass surface showing infection (F) Day 6; egg mass has completely disintegrated and dead embryos are trapped within jelly on the floor of the tank.

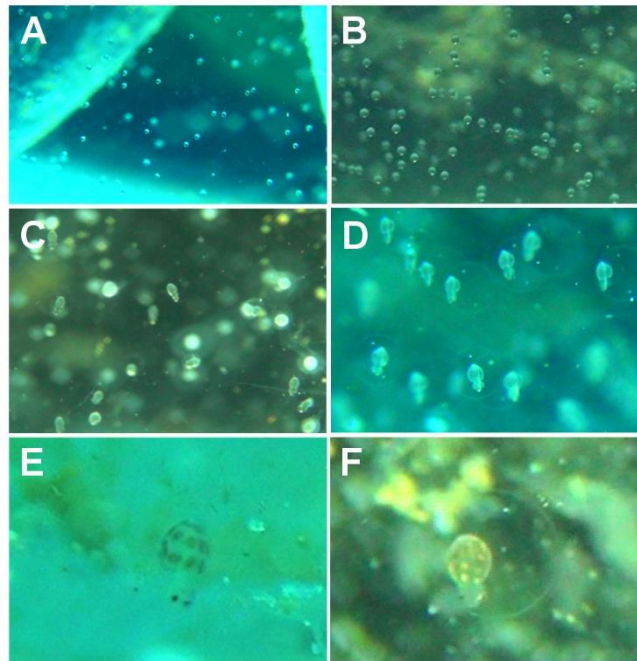


Fig. S2. Time series of embryonic development within egg mass inside the chorion. (A) Day 1; fertilized eggs. Egg diameter, 0.88 mm (B) Day 2; spherical embryos with expanded chorion (C) Day 3; embryos have a mantle, eye, arms and proboscis nearly developed. Embryo length, 0.9 mm (D) Day 4; embryos have a developed mantle, pigmented eyes, and the chorion has increased in diameter, 1 mm (E-F) Day 5 & 6 respectively; the advanced embryo is capable of movement by active mantle contraction inside the chorion, within the egg mass and the chromatophores are well developed. Embryo length, 1 – 1.2 mm.