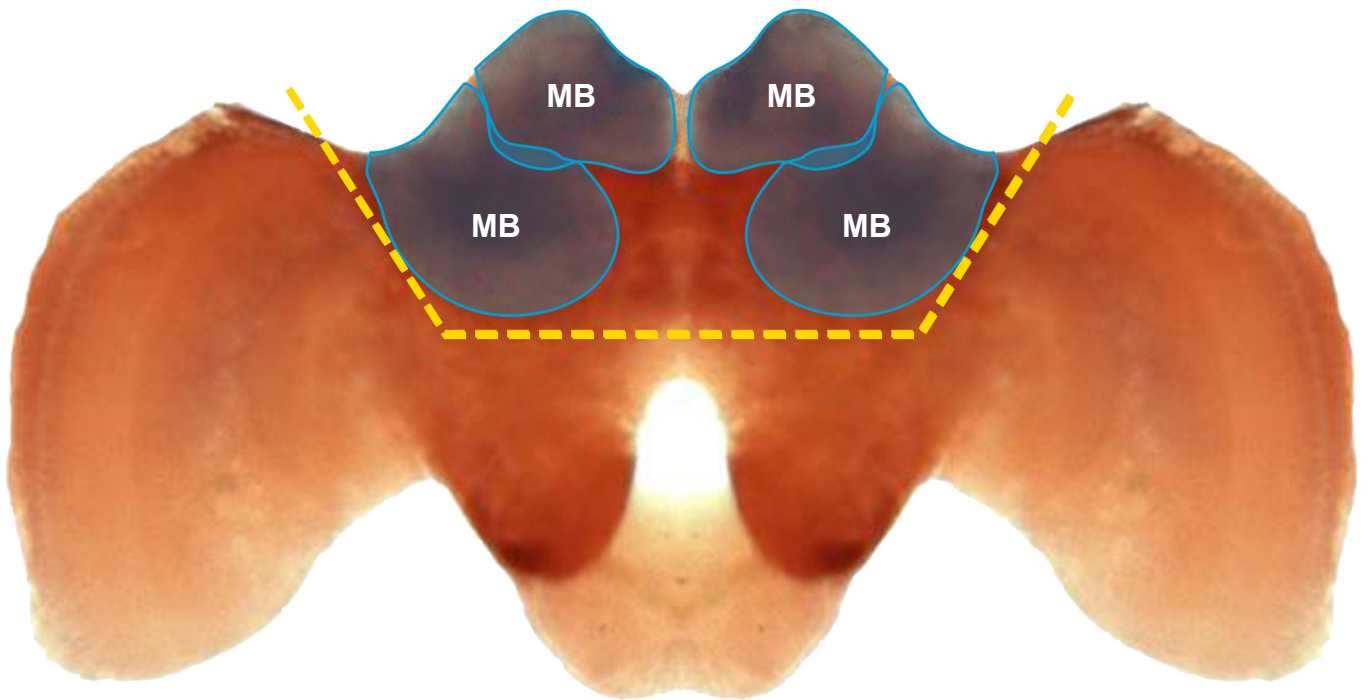
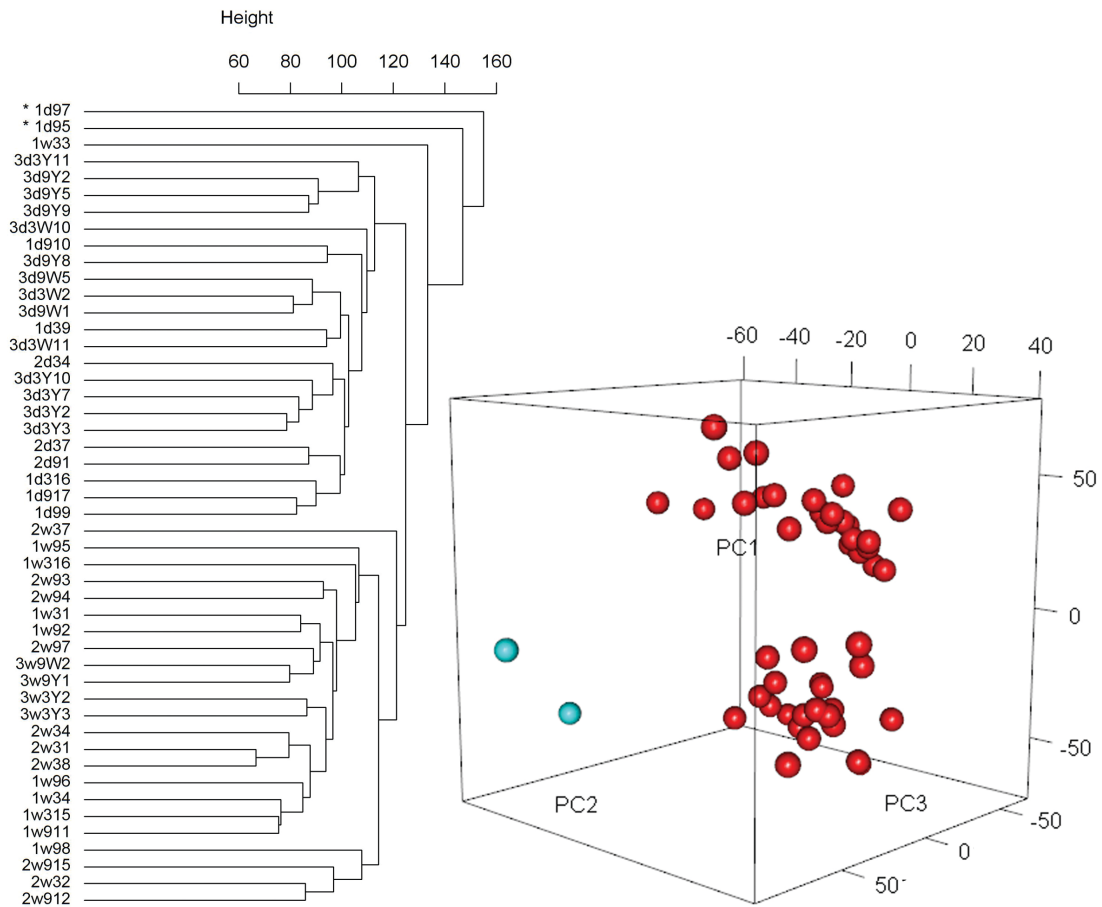


## Supplementary Figures



**Fig. S1. Dissection schematic showing the mushroom bodies (MB) and surrounding nuclei, a region of the brain associated with multimodal processing and memory.** The outer dashed line shows where dissection cuts were made. (From McNeill and Kapheim et al., 2016).



**Fig. S2. Exclusion of two individuals (1d97 and 1d95) from analyses due to outlier status, as revealed by hierarchical clustering (left) and Principal Components Analysis (See Methods for details).**

**Table S1.** Significantly enriched Gene Ontology (GO) categories for genes differentially expressed genes (DEGs) between drones and workers (sex differences).

[Click here to Download Table S1](#)

**Table S2.** Significantly enriched Gene Ontology (GO) categories for differentially expressed genes (DEGs) between drones that were initiating mating flights and inactive drones (activity differences).

[Click here to Download Table S2](#)