

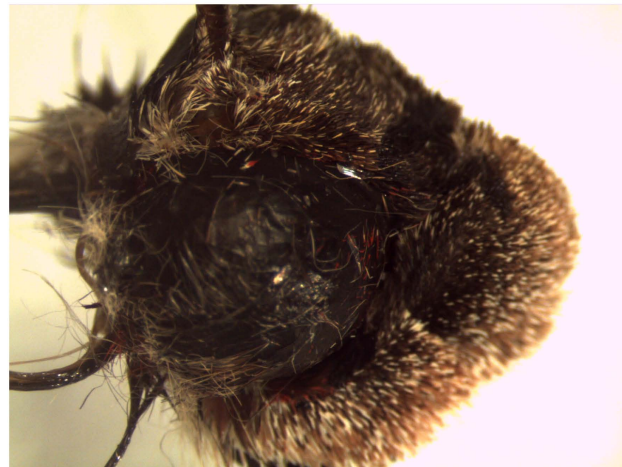
Control



Dorsal



Ventral



Negative

Fig. S1. Photographs of painted moths. The control photograph shows the anterior (A) - posterior (P) axis, and the dorsal (D) - ventral (V) axis. The dorsal-ventral axis was determined by pitching the moth up at 35° , the pitch angle of a plume tracking *M. sexta*, and drawing the equator of the eye at this angle.