

Figure S1. Experimental setup in which two stimuli were simultaneously placed on either side of the terrarium, where the test lizard was introduced. The lateral view shows the stimulus from the perspective of the test lizard.

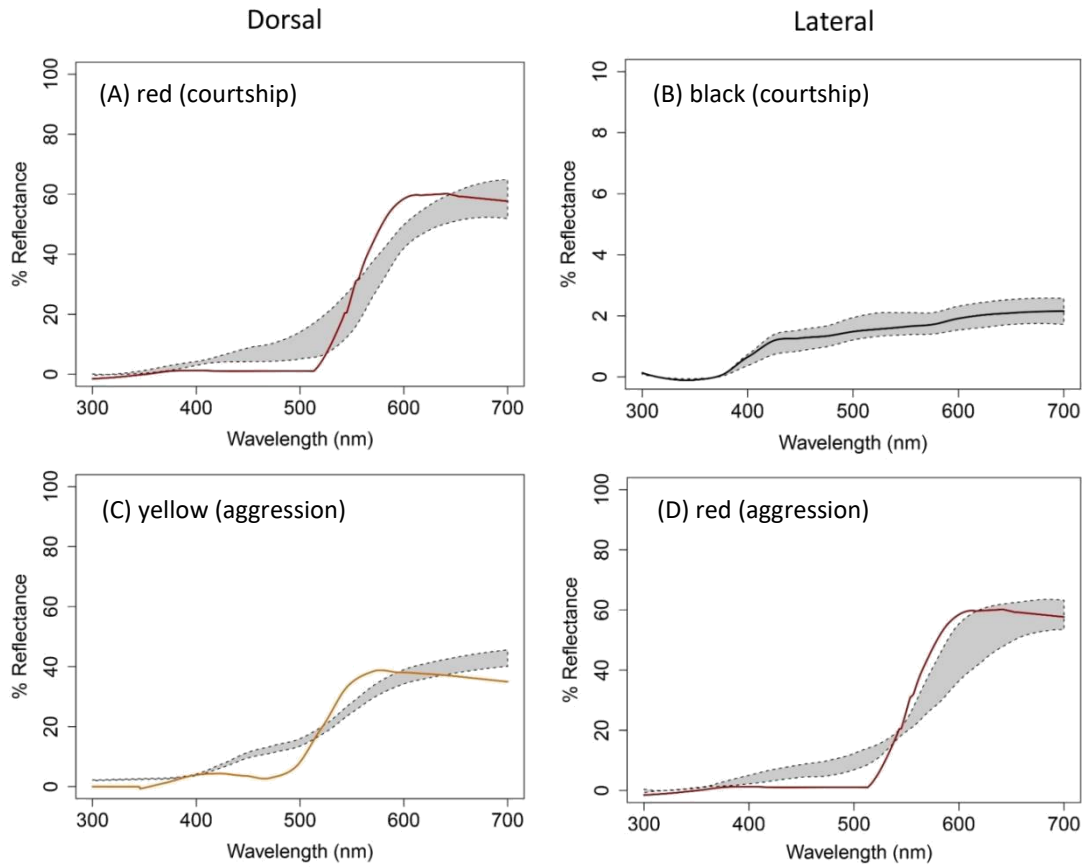


Figure S2. Typical variation in reflectance spectra in males of *P. dorsalis* during staged social interactions. Shown are the (A) red dorsal and (B) black lateral regions during courtship interactions with females, and the (C) yellow dorsal and (D) red lateral regions during aggressive interactions with males (grey spectral band; N=5 for each colour). Solid lines depict the reflectance spectra of corresponding model colours used on the robotic stimuli.

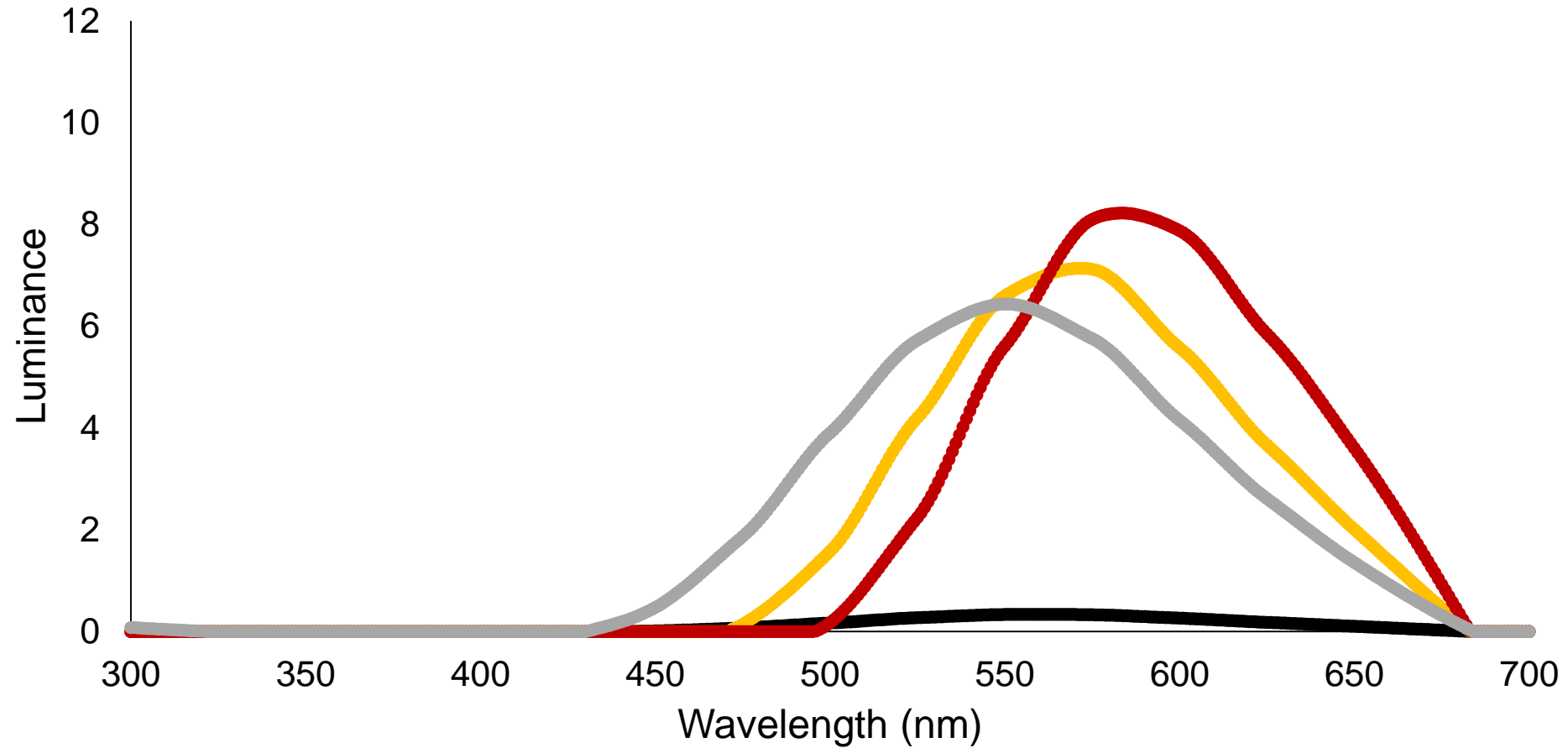


Figure S3. Luminance for all four model colours (black, grey, yellow and red) on the robotic stimuli. Luminance values were calculated as reflectance*irradiance*spectral sensitivity of the long wavelength sensitive cone.