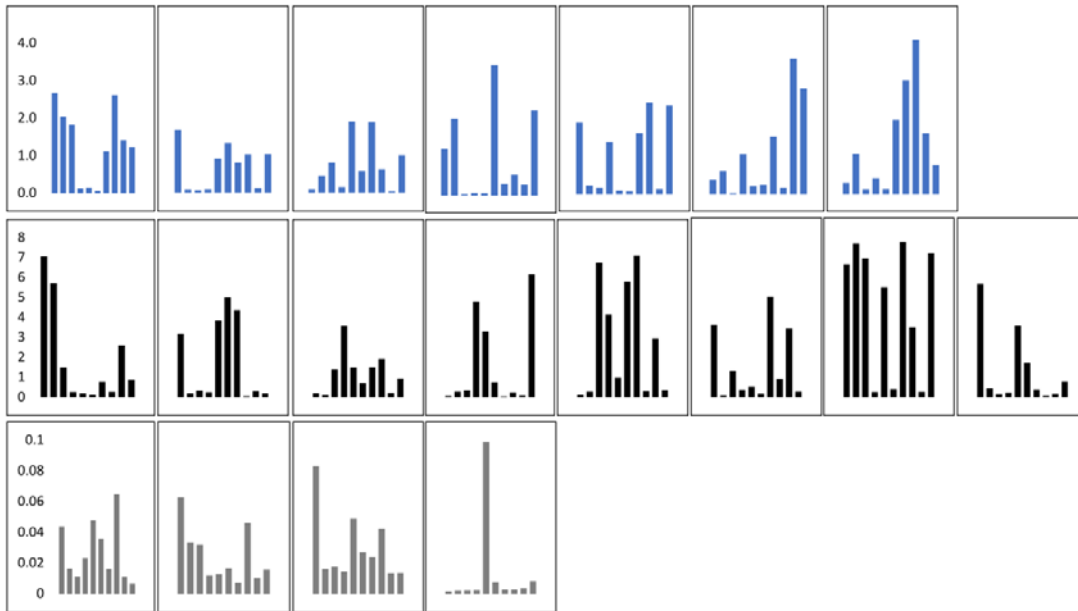


**Fig. S1.** Representative curves, showing the position of the bug on the horizontal surface of the centrifuge drum, obtained for male and female bedbugs *Cimex lectularius* during centrifugal force tests on a smooth resin substrate. The inset illustrates the experimental setup and the bug's position on the drum.



**Fig S2.** Attachment forces [mN] along the y-axis over ten successive runs (x-axis) in females (blue bars, top row), males (black bars, middle row) and fifth instar nymphs (grey bars, bottom row) of bedbugs *Cimex lectularius*. There is no evidence for a systematic decrease (fatigue) or increase (systematic error) of forces across ten trials.