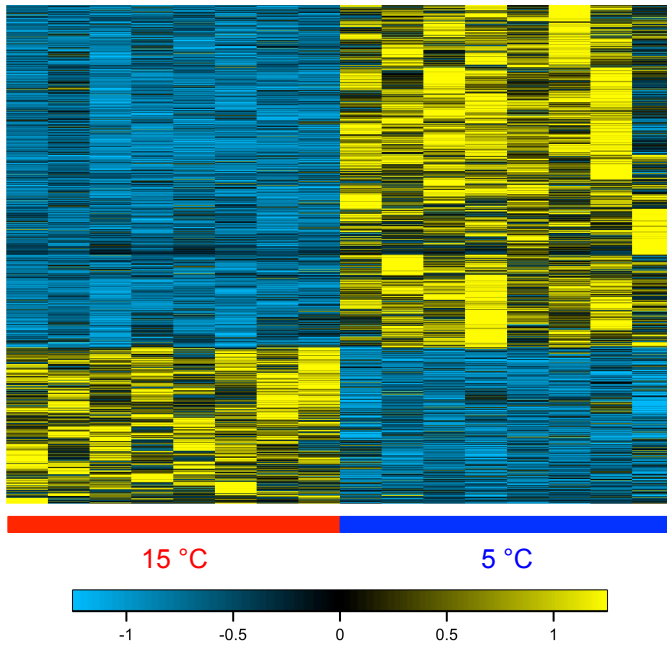
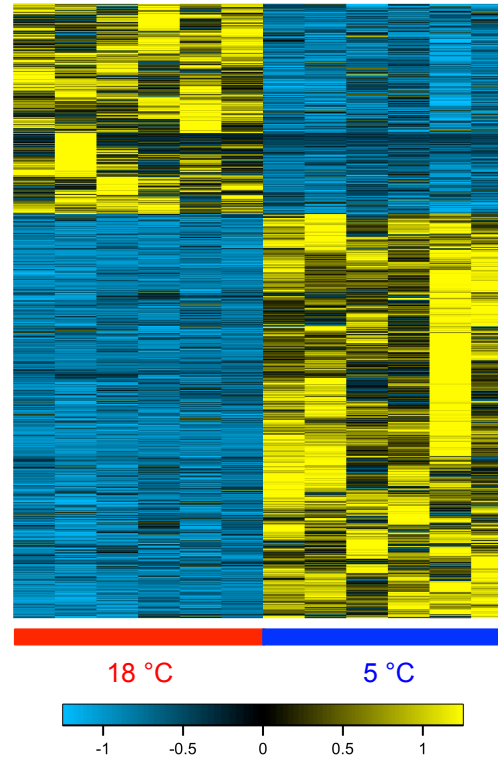


A: *F. heteroclitus*



B: *G. aculeatus*



C: *D. rerio*

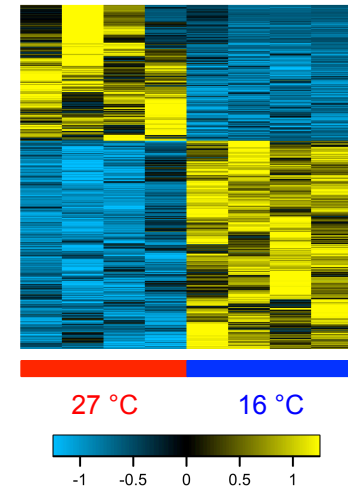


Figure S1. Heatmaps of differentially expressed (DE) genes as a result of cold acclimation in killifish (A), stickleback (B) and zebrafish (C). Each row represents expression values (\log_2 counts per million) for one gene normalized to the mean expression of that gene across all fish (yellow: higher expression; light blue: lower expression). Columns display expression values for individuals fish (red horizontal bars: warm-acclimated fish; royal blue horizontal bars: cold-acclimated fish).

Table S1 -S4.

[Click here to Download Tables S1 - S4](#)