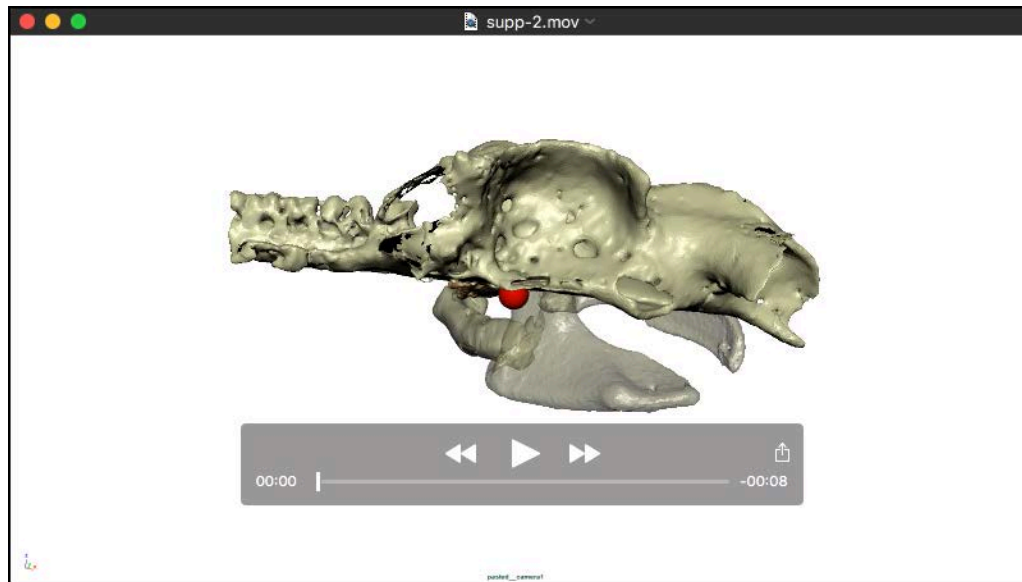
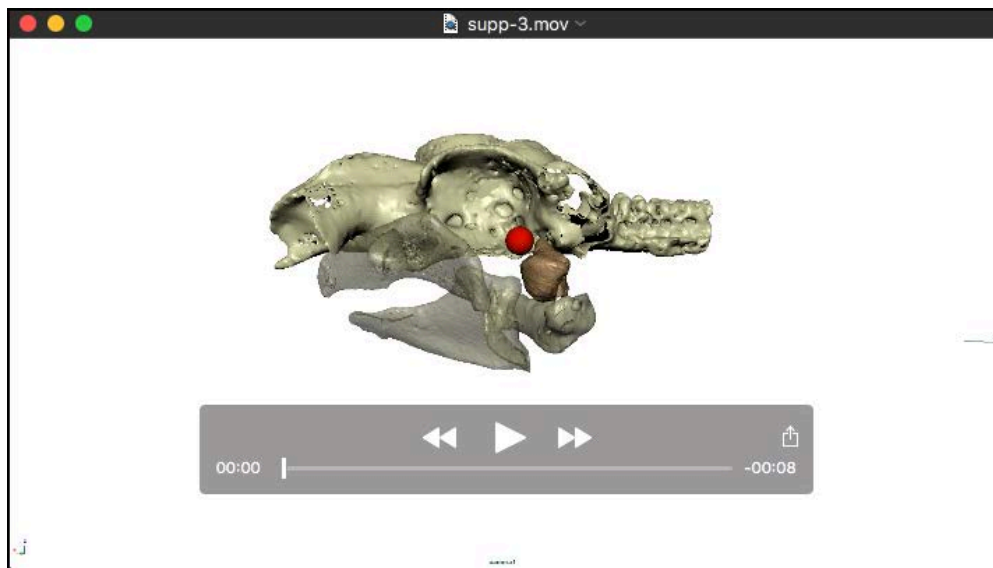


## Supplemental movies



### Movie 1 Ceratohyal LAR, medial view.

XROMM animation of suction feeding in a bamboo shark. Cranium, hyomandibula, and upper and lower jaws are animated. The red ball is digitally fixed to the dorsal edge of the ceratohyal and motion in front of or behind the element indicates direction and extent of long-axis rotation.



**Movie 2 Hyomandibula LAR, lateral view.**

XROMM animation of suction feeding in a bamboo shark. Cranium, hyomandibula, and upper and lower jaws are animated. The red ball is digitally fixed to the dorsal edge of the hyomandibula and motion in front of or behind the element indicates direction and extent of long-axis rotation