

Figure S1. Recruitment by participating ants during reunifications after

division between a good and a poor/mediocre nest (Experiment 2). The nine panels show three reunifications for each of three colonies (C1, C2, and C3). Within each panel, each line of icons corresponds to a different ant, indicated by the codes on the vertical axis. Crosses and triangles indicate transports and tandem runs, respectively. Blue symbols indicate transport or recruitment to the better nest, and red symbols to the worse nest; green crosses are transports in which the load could not be identified. The horizontal axis indicates time since the two nests were placed together in the same arena. For a given ant, tandem symbols are slightly offset from transport symbols to improve clarity. Note different time scales for each trial.

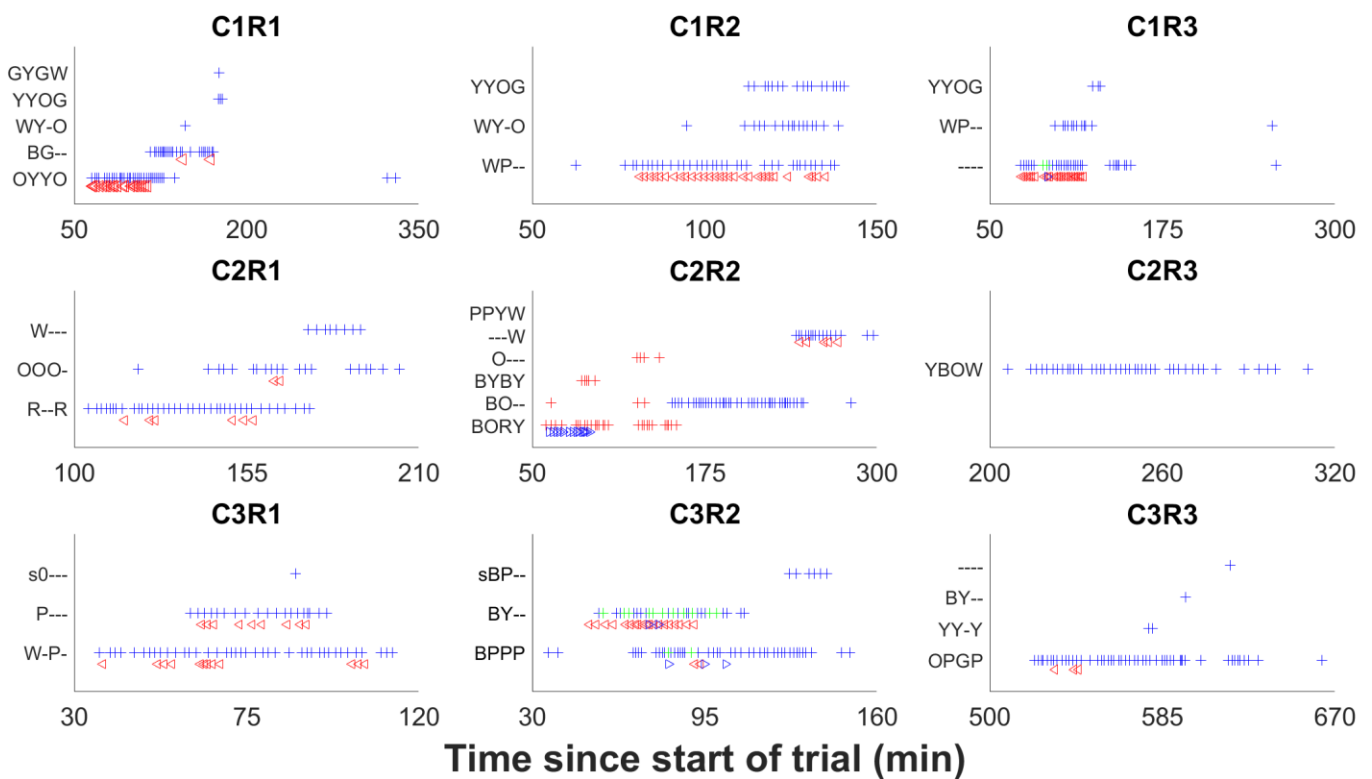


Figure S2. Recruitment by participating ants during reunifications by colonies

split between identical nests (Experiment 3). The nine panels show three reunifications for each of three colonies (C10, C11, and C12). Within each panel, each line of icons corresponds to a different ant, indicated by the codes on the vertical axis. Crosses and triangles indicate transports and tandem runs, respectively. Blue symbols indicate transport or recruitment to the nest on the left side of the arena, and red symbols to the nest on the right side. Also plotted are the worker populations of the nests on the left (dotted blue line) and right (solid red line) over time. The horizontal axis indicates time since the two nests were placed together in the same arena. For a given ant, tandem symbols are slightly offset from transport symbols to improve clarity. Note different time scales for each trial.

