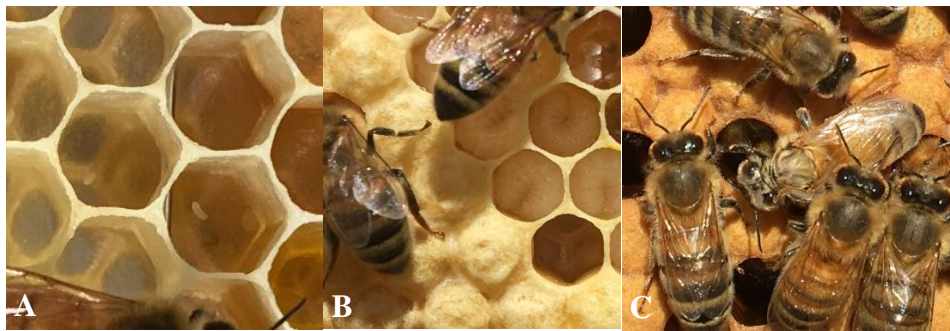
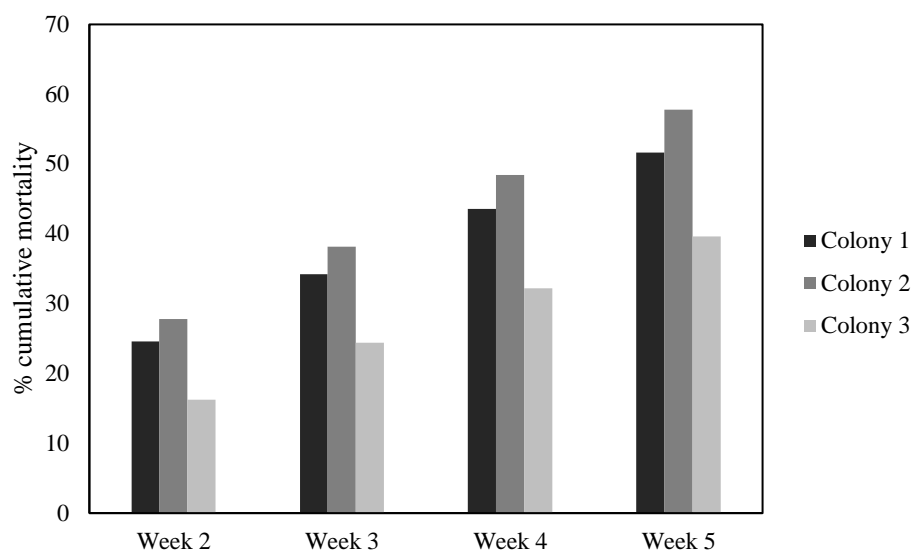




**Figure S1. Brood frame (left) and frame with wax comb used to replace brood frame (right)**



**Figure S2. Honey bee brood of colony 1 showing (A) eggs, (B) larvae (top right) and pupae covered with capping (bottom left), and (C) juvenile adult (centre).**



**Figure S3. Graph showing % cumulative mortality for each colony.**