

Fig. S1 . Disengagement after mating. Sequence of still images taken with a Nikon D7200 camera from the start (time = 0 ms) of disengagement after mating on a vertical surface. The images are arranged from left to right. As the male (top) and female (bottom) gradually separate, the genitalia of both are progressively extended.

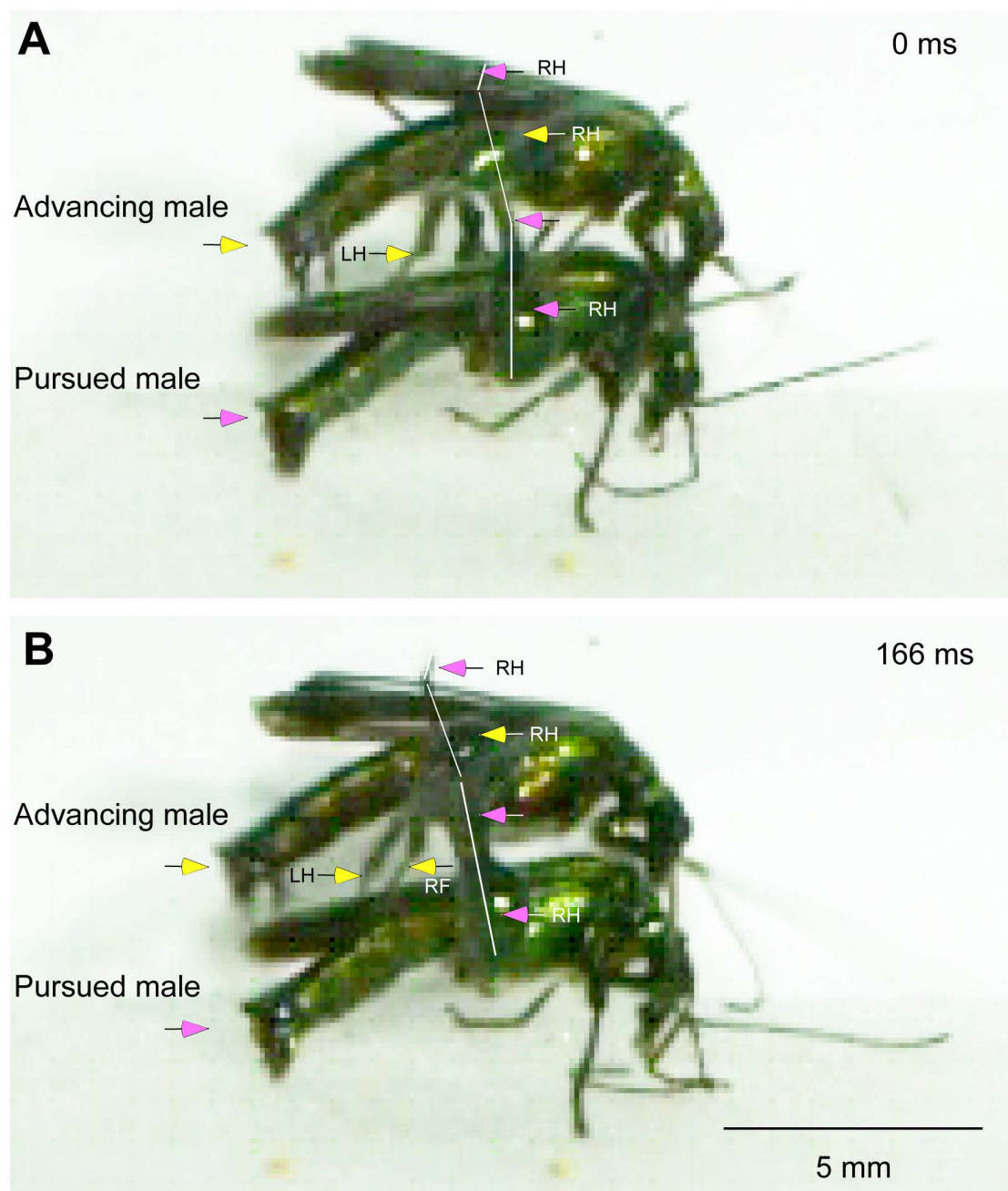
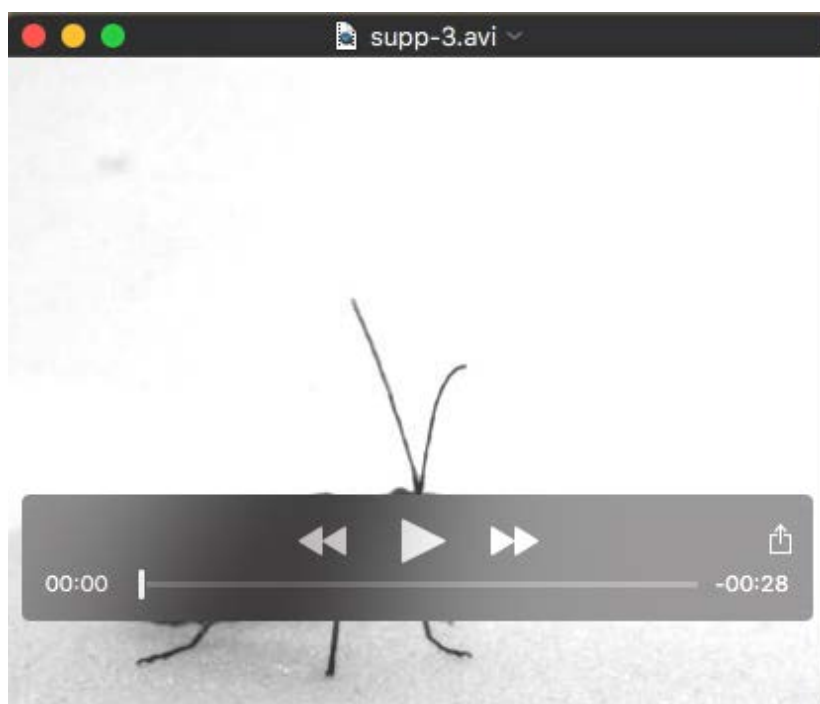


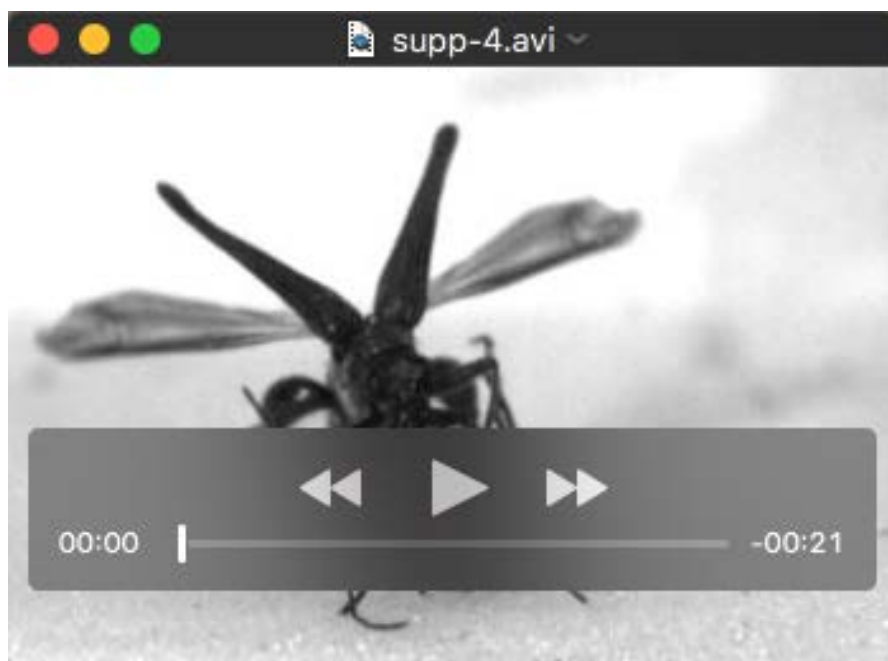
Fig. S2. Male to male interactions. (A, B) Two images separated in time by 166 ms from a video of an advancing male (yellow arrow heads) mounting a pursued male (pink arrow heads) but meeting resistance from his extended hind legs (white lines).



Movie 1. High speed movie with images captured at 1000 s^{-1} and replayed at 10 s^{-1} of a male *O. nobilis* taking-off as viewed from the side.



Movie 2. High speed movie with images captured at 1000 s^{-1} and replayed at 10 s^{-1} of a female *O. nobilis* taking-off as viewed from the side.



Movie 3. Video captured at 250 frames s^{-1} and replayed at 30 s^{-1} of a male mounting a female and grasping her with his enlarged hind legs during mating.