

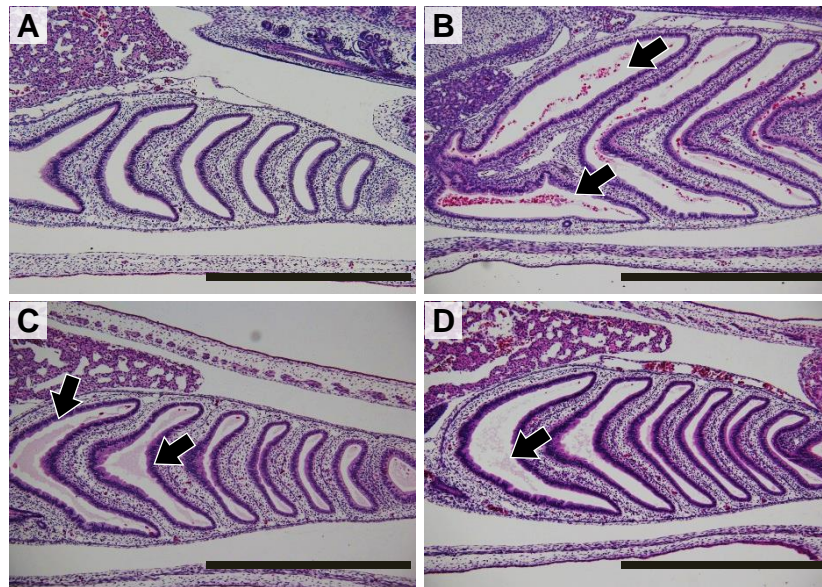
**Table S1. Primer sets used in the present study**

Target		Amplicon (bp)
Primer sets for molecular cloning (5' to 3')		
<i>stpepT1</i>	Sense:	ATTCAGCCTGATCAGATGCAGA
	Antisense:	CCTGGAGCACTGATTTTCATGTTG
<i>stslc6a19</i>	Sense:	TGGGCTGTGCTGTATGTATG
	Antisense:	AGAAAGTCCGAGGCAGAATAAC
<i>stactb</i>	Sense:	TGGTTGGTATGGGACAGAAAG
	Antisense:	ATCTGCTGGAAGGTGGAAAG
Primer sets for real-time qPCR assay (5' to 3')		
<i>stpepT1</i>	Sense:	ACCCTTCCTATCTTCCCTACC
	Antisense:	CCTCAGATGGTGCCAGTAAAT
<i>stslc6a19</i>	Sense:	TGGGCTGTGCTGTATGTATG
	Antisense:	TCTACCCTCCCTTATCTTGTC
<i>stactb</i>	Sense:	CCTGGCATTGCAGACCGTAT
	Antisense:	GCAATGATCTTGATTTTCATGGTACT

Target gene abbreviations: PepT1, peptide transporter 1; Slc6a19, solute carrier family 6a19; actb,  $\beta$ -actin.

**Table S2. The accession numbers of genes used in the analysis**

Gene name	Accession Number
<i>Scyliorhinus torazame</i> Slc15a1	LC507941
<i>Sphyrna tiburo</i> Slc15a1	KX216515.1
<i>Rhincodon typus</i> Slc15a1	XM_020512255.1
<i>Callorhinchus milii</i> Slc15a1	XM_007906296.1
<i>Homo sapiens</i> solute carrier family 15 (oligopeptide transporter), member 1	BC096329.3
<i>Mus musculus</i> Pept1	AF205540.1
<i>Meleagris gallopavo</i> PepT1	AY157977.1
<i>Gallus gallus</i> PEPT1	KF366603.1
<i>Oncorhynchus mykiss</i> SLC15A1	KY775396.1
<i>Danio rerio</i> Slc15a1	AY300011.1
<i>Xenopus tropicalis</i> Slc15a1	XM_012957717.1
<i>Rhinatrema bivittatum</i> SLC15A1	XM_029604484.1
<i>Protobothrops mucrosquamatus</i> SLC15A1	XM_015810135.1
<i>Chrysemys picta bellii</i> SLC15A1	XM_005303909.3
<i>Lepisosteus oculatus</i> Slc15a1	XM_015363348.1
<i>Latimeria chalumnae</i> SLC15A1	XM_005992304.1
<i>Scyliorhinus torazame</i> Slc6a19	LC507942
<i>Rhincodon typus</i> B(0)AT1	XP_020367154
<i>Callorhinchus milii</i> B(0)AT1	XP_007887825
<i>Homo sapiens</i> SLC6A19	NM_001003841.3
<i>Mus musculus</i> Slc6a19	NM_028878.4
<i>Gallus gallus</i> SLC6A19	XM_419056.6
<i>Meleagris gallopavo</i> SLC6A19	XM_010708607.2
<i>Lepisosteus oculatus</i> Slc6a19	XM_006635651.2
<i>Latimeria chalumnae</i> SLC6A19	XM_014498080.1
<i>Danio rerio</i> Slc6a19a.1	NM_001098178.1
<i>Xenopus tropicalis</i> Slc6a19	NM_001127113.1
<i>Pelodiscus sinensis</i> SLC6A19	XM_006137063.3
<i>Anolis carolinensis</i> Slc6a19	XM_003219814.3
<i>Nanorana parkeri</i> SLC6A19	XM_018568852.1
<i>Homo sapiens</i> PepT2	NM_021082
<i>Homo sapiens</i> Slc6a18	NM_182632



**Figure S1. Yolk inflow occurred nearly pre-hatching period.** Sections of the intestine. (A) and (B) Sections of the intestine of stage 31L embryos within 24 hours after pre-hatching. (C) and (D) Sections of the intestine of stage 31L embryos within 48 hours after pre-hatching. Arrows indicate yolk inside the intestinal lumen. Bar = 1mm.