

Fig. S1. The absence of the symbiont results in increased variance of metabolite abundance in hemolymph.

The average coefficient of variation for the relative abundance of all 145 metabolites under both colonization conditions and all three time points. Differing letters indicate statistical differences between groups (Kruskal-Wallis test with multiple comparisons). Mean values with error bars as S.E.M. are shown.

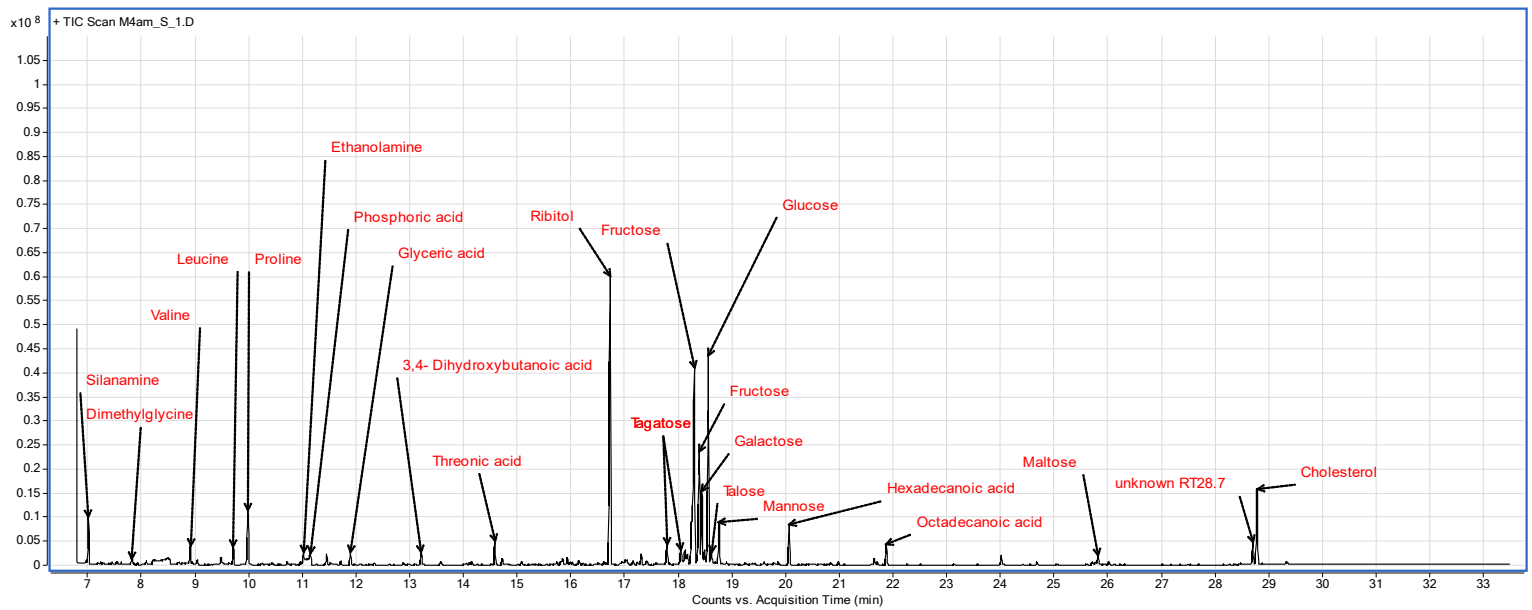


Fig. S2. A representative sample of *E. scolopes* hemolymph.

A GC-MS chromatogram of hemolymph collected at 0400 h from a SYM male; abundant metabolites are indicated in red.

Table S1

[Click here to Download Table S1](#)