

Supplemental Material

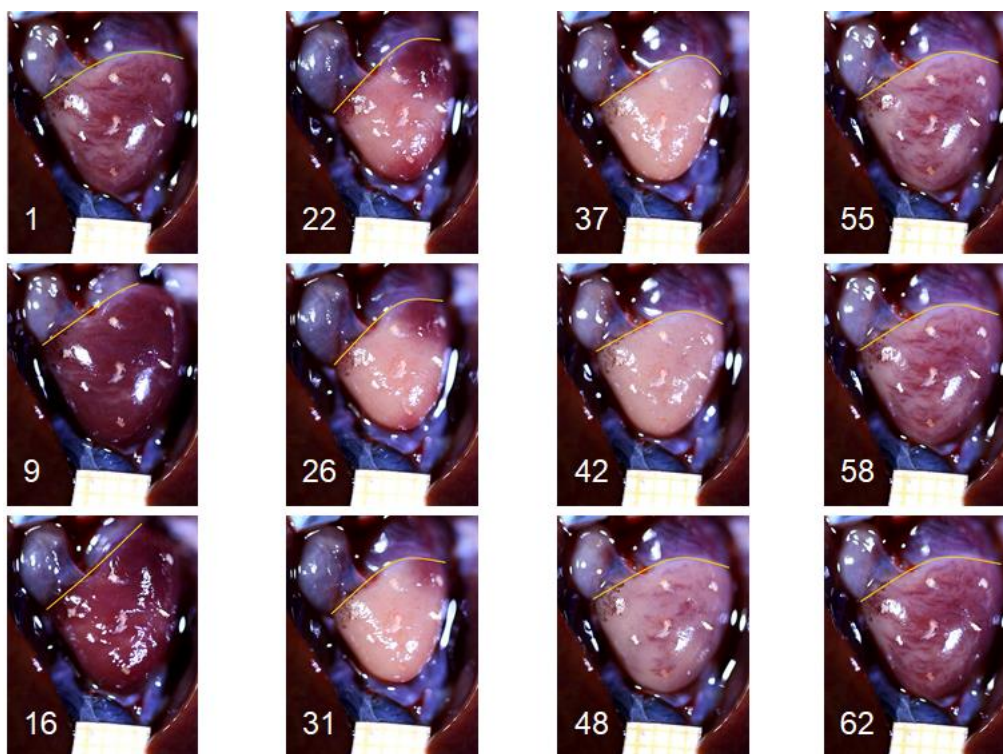
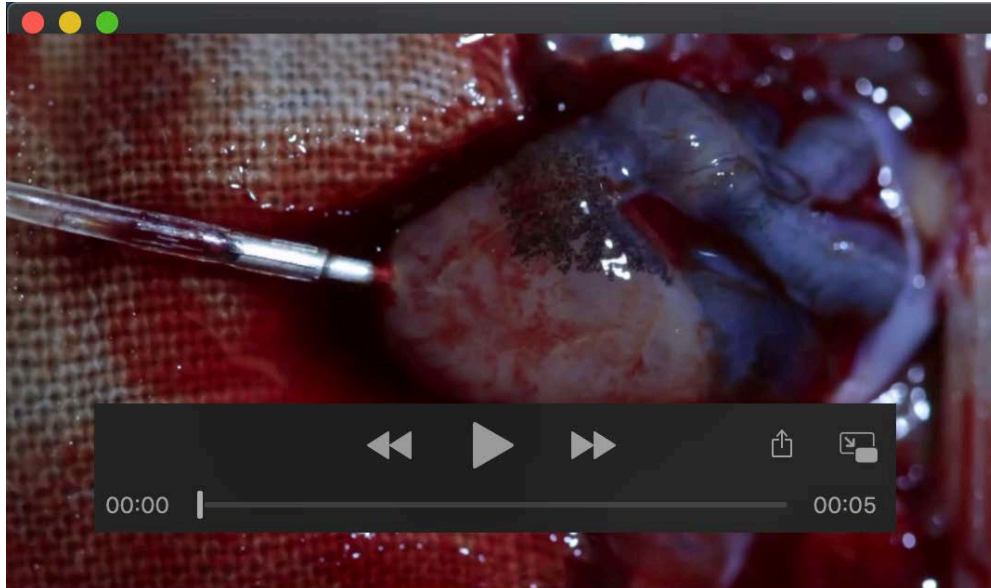


Figure S1.

Demonstration of nonuniform stretch and contraction in the ventricular basal region. Selected frames taken from a video record of the contraction-relaxation cycle of toad ventricle. Frame numbers are shown in bottom left-hand corners. A fragment of calibrated paper (1 mm grid) is presented under the heart apex. For clarity, the atrioventricular margin is designated by a yellow line. See pronounced movement of the left side of the ventricular base (right-hand side from the observer viewpoint) - a slightly concave yellow line in frame 16 and a markedly bent yellow line in frame 37.



Movie 1.

Slow-motion video recording of normal and bolus-induced ventricular activation. Asterisks indicate atrial contraction and bolus injection via catheter inserted into the apex as stimuli for subsequent ventricular contraction.