

Table S1. Gecko measurements before and after autotomy, for all experimental groups.

	Mass at start of experiment (g)	Autotomized tail mass (g)	Autotomized tail mass as a % of total mass	Snout-vent length at start of experiment (mm)	Tail length at start of experiment (mm)	Total length at start of experiment (mm)	Autotomized tail length (mm)	Autotomized tail length as a % of body length	Mass at end of experiment (g)	Snout-vent length at end of experiment (mm)	Tail length at end of experiment (mm)
Control geckos n=4	20.50			100	80	180			26.5	100	80
	21.20			90	80	170			26.6	95	80
	19.30			90	80	170			26	110	80
	20.50			100	80	180			27.7	100	80
	Mean	20.38		95	80	175			26.7	101.25	90
s.e.m	0.39			2.89	0	2.89			0.36	3.15	0.00
Tail Loss geckos, day 9 group n=5	21.7	3.8	17.51	95	75	170	68	40.00	20	100	12
	22.6	4.5	19.91	100	78	178	68	38.20	19.6	100	15
	22.7	4.6	20.26	100	75	175	74	42.29	19.5	95	11
	22.3	4.7	21.08	100	90	190	72	37.89	19	100	11
	24.2	4.6	19.01	96	75	171	65	38.01	20.2	95	11
Mean	22.7	4.44	19.55	98.2	78.6	176.8	69.4	39.28	19.66	98	12
s.e.m.	0.41	0.16	0.61	1.11	2.91	3.60	1.6	0.84	0.21	1.22	0.77
Tail loss geckos, day 32 group n=5	22.8	4.1	17.98	105	80	185	72	38.92	23.2	110	20
	20.7	3.9	18.84	90	80	170	70	41.18	20.6	110	10
	20.7	3.8	18.36	107	80	187	76	40.64	20.7	100	20
	22.8	4.7	20.61	95	77	172	71	41.28	22.7	100	20
	21.1	4	18.96	100	80	180	71	39.44	22.2	110	30
Mean	21.62	4.10	18.95	99.40	79.40	178.80	72.00	40.29	21.88	106.00	20.00
s.e.m.	0.49	0.16	0.45	3.14	0.60	3.40	1.05	0.47	0.53	2.45	3.16
All tail loss geckos n=10											
Mean	22.16	4.27	19.25	98.80	79.00	177.80	70.70	39.79			
s.e.m.	0.35	0.12	0.37	1.58	1.41	2.36	1.00	0.49			

Table S2. Monofilament buckling force values.

Calibrated with Denver Instrument SI-603 scale, measured in grams (g).

Monofilament Number	First Measurement (g)	Second Measurement (g)	Average (g)
3	0.094	0.088	0.091
4	0.133	0.124	0.1285
5	0.175	0.154	0.1645
6	0.258	0.256	0.257
7	0.383	0.355	0.369
8	0.575	0.534	0.5545
9	1.15	1.088	1.119
10	2.381	2.221	2.301
11	3.16	3.3	3.23
12	6.395	6.03	6.2126

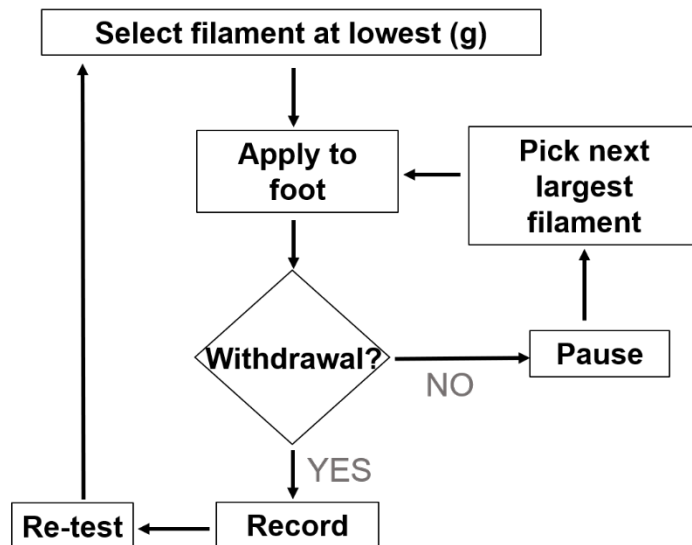


Figure S1. Ascending stepwise monofilament method.

The monofilament assay was performed following the protocol of Field et al. (1997), using an ascending stepwise approach. Testing began with the smallest gram monofilament, applied to the site of interest until buckling. A withdrawal response from the geckos consisted lifting of either the foot (when testing the forelimbs and hindlimbs), or body/tail (when testing the tail). If no withdrawal response was observed, the application was deemed negative, and the subsequent gram monofilament was applied. If positive, the response was recorded and a re-test was done. The average of the two thresholds was taken to be the cutaneous sensitivity threshold. Flow chart adapted from Bradman et al. (2015).