

Supplementary Tables

Table S1

Species	Condition	Distance	Dances
<i>Apis florea</i>	Dense vegetation	100m	8
		200m	5
		300m	7
		400m	4
		500m	10
	Sparse vegetation	100m	10
		200m	6
		300m	6
		400m	6
		500m	8
<i>Apis cerana</i>	Dense vegetation	100m	10
		200m	10
		300m	10
		400m	10
		500m	10
	Sparse vegetation	100m	10
		200m	10
		300m	10
		400m	10
		500m	10

List of dances analysed for each distance for both conditions in both species

Table S2

Species	Parameter	Sparse				Dense			
		Intercept		Slope		Intercept		Slope	
		Est (t/z value)	p	Est (t/z value)	p	Est (t/z value)	p	Est (t/z value)	p
<i>A. florea</i>	WP	-2.377 (-5.234)	<0.001	0.686 (8.816)	<0.001	-1.655 (-2.509)	0.015	0.349 (2.921)	0.005
	RP	-1.074 (-0.599)	0.551	0.592 (1.790)	0.079	-3.769 (-1.449)	0.153	0.815 (1.730)	0.089
	NC	2.628 (16.900)	<0.001	-0.0007 (-1.443)	0.149	-0.488 (-1.926)	0.054	0.0009 (1.165)	0.244
<i>A. cerana</i>	WP	-4.191 (-11.558)	<0.001	0.998 (13.988)	<0.001	0.516 (1.006)	0.318	-0.135 (-1.336)	0.186
	RP	-0.101 (-0.099)	0.922	0.408 (2.227)	0.029	-1.389 (-0.989)	0.326	0.292 (1.148)	0.255
	NC	2.417 (14.146)	<0.001	-0.0003 (-0.511)	0.609	-0.168 (-0.673)	0.501	0.0001 (0.134)	0.893

Model summary of the mixed-effects models fit for each of the three dance parameters (WP: Waggle Phase duration; RP: Return Phase duration; NC: Number of Dance Circuits) in *A. florea* and *A. cerana*. The estimate (Est) as well as the associated t/z value (t for continuous parameters, z for discrete parameters) for the intercept and slope in both conditions are provided along with the associated p values. The models were implemented with the Sparse vegetation condition as the base contrast level, and hence the p value of the slope and the intercept in this case is associated with whether the estimate is different from zero. In the case of Dense vegetation condition, the estimate value represents the difference in the estimated value between the Dense and Sparse vegetation conditions, and the p value is associated with this difference. Significant differences at the $p < 0.05$ level are highlighted in bold.

Supplementary Figure

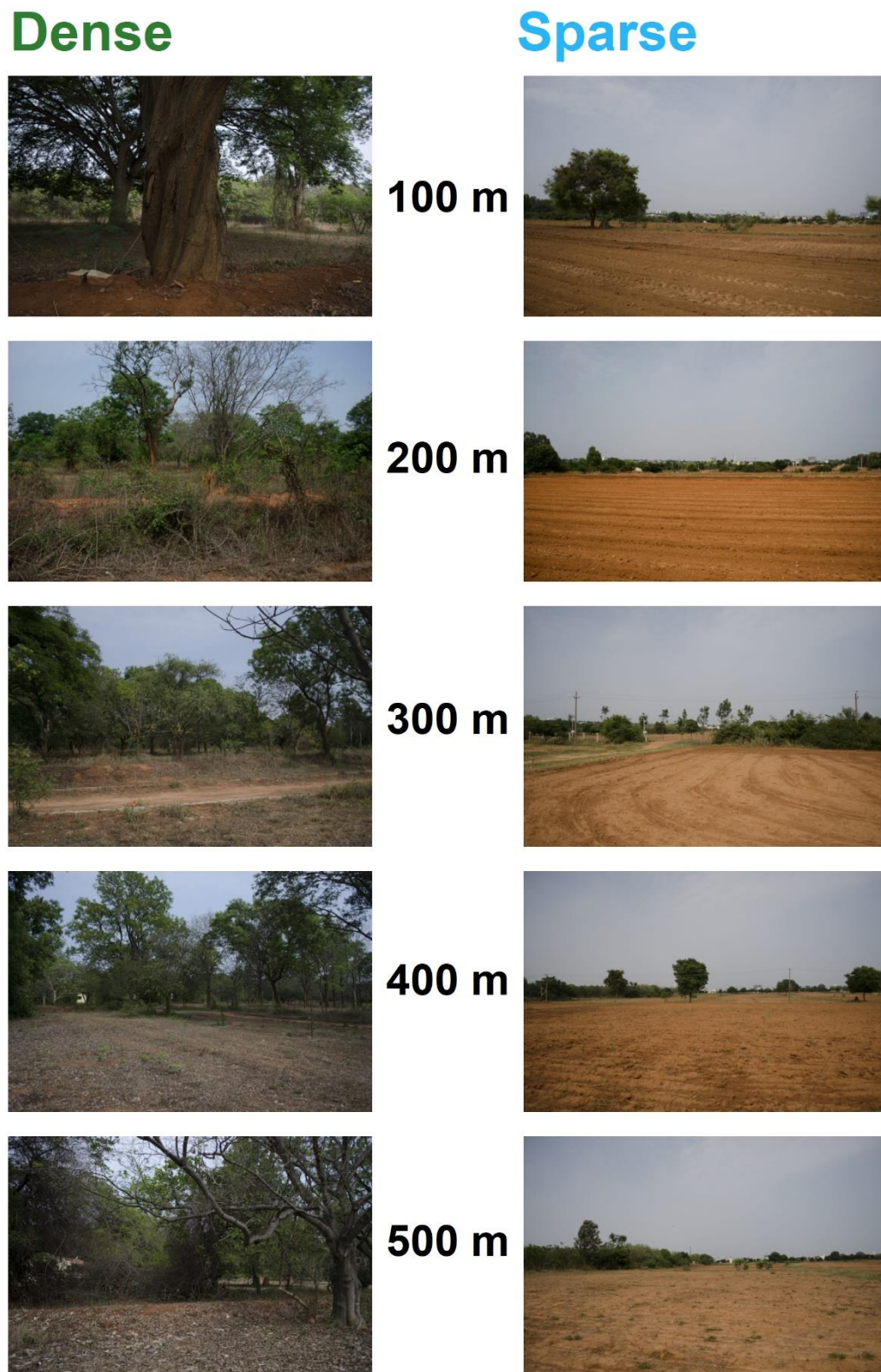


Figure S1

Photographs at every 100 m along the 500 m transect (facing in the direction of the hive) in both the vegetation conditions. These photographs were used to obtain the contrast values in Figure 1 in the manuscript.