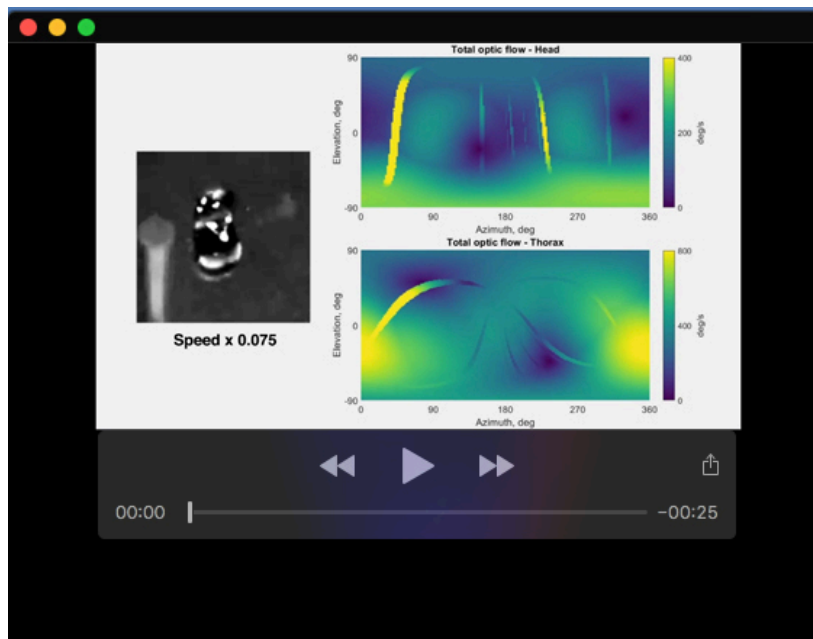




Movie 1. Animation of the experiment setup including a bee with markers on the head and thorax that is flying through the obstacle course.



Movie 2. Two sample highspeed videos of bees flying through the obstacle course



Movie 3. Part I: For Sample 1 flight in SV2, instantaneous heatmaps of the optic flow across the spherical visual field calculated using the bee's head and thorax position and orientation respective. Also included in the video is a zoomed view centred on the bee. Part II: For the same flight instantaneous heatmaps of the nearness map across the spherical visual field calculated using the bee's head and thorax position and orientation respective. Also included in the video is a zoomed view centred on the bee.