

Fig. S1. Changes in gene expression through time for individual genes mentioned in the text where color indicates population and treatment. Expression moves forward in time, where 0, 1, 2, 3, and 4 correspond to time 0, 0.25, 1, 3, and 7 (hypo) or 10 (hyper) days, respectively.

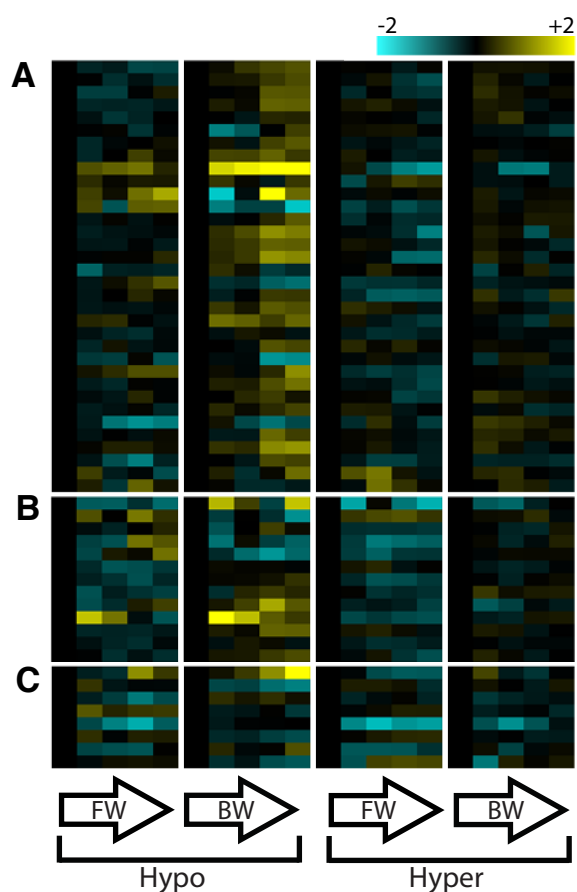


Fig. S2. Gene sets underlying functional enrichment from the evolved, population dependent response (Fig. 4). Yellow and blue represent up- and down-regulation, respectively, and data are shown as log₂ expression. For each population within each treatment, data are normalized to t=0 where columns represent time points 0, 0.25, 1, 3, 7 (hypo) or 10 (hyper) days and rows represent individual genes. Groups are assigned by functional enrichment category: (A) mitochondrial component, (B) cellular macromolecular complex subunit organization, and (C) response to DNA damage stimulus.