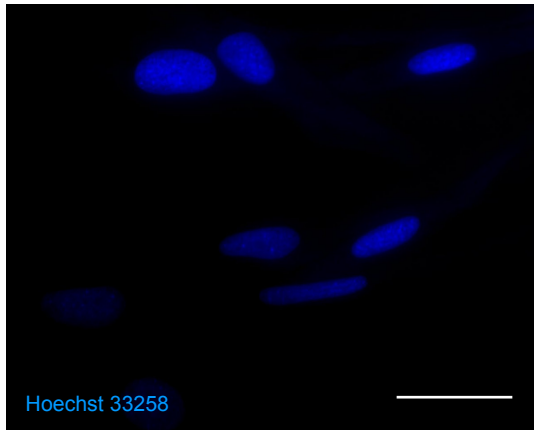
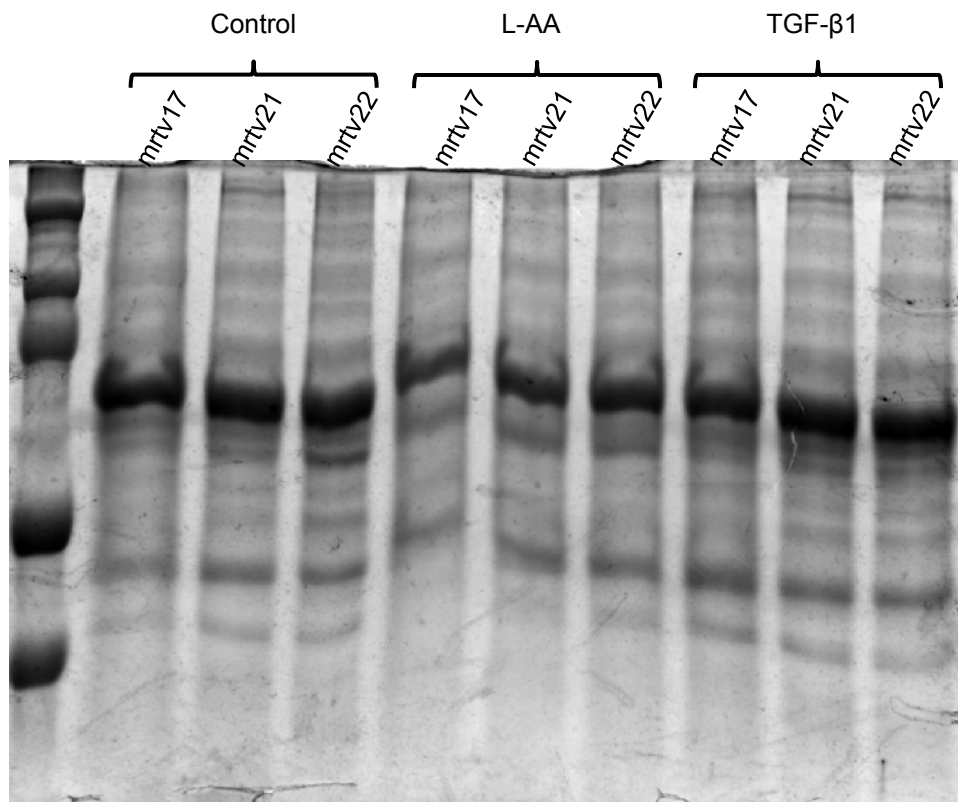


**Fig. S1. Validation of fibroblast cell origin.** Tissue from sectioned rainbow trout muscle tissue (A) and cultured cardiac fibroblasts (B) stained with CD-31 antibody to determine presence or absence of endothelial cells. Muscle tissue is presented at 200 x magnification whereas cells are imaged at 600 x. Cells did not give a distinct CD-31 signal indicating the lack of endothelial cell marker presence. Scale bars = 50  $\mu\text{m}$  (A), 20  $\mu\text{m}$  (B).



**Fig. S2. Mycoplasma test.** Representative image of cultured fibroblasts cells stained with Hoechst 33258 stain for mycoplasma. Image taken at 600 x water immersion. All lines were tested and none were positive for mycoplasma (no nucleated particles surrounding fibroblast nucleus).



**Fig. S3. Total protein stained by coomassie blue used to standardize collagen type I.** Normalizing gel was run at the same time as gel used for Western blotted membrane with identical volumes of protein from the same sample tubes.