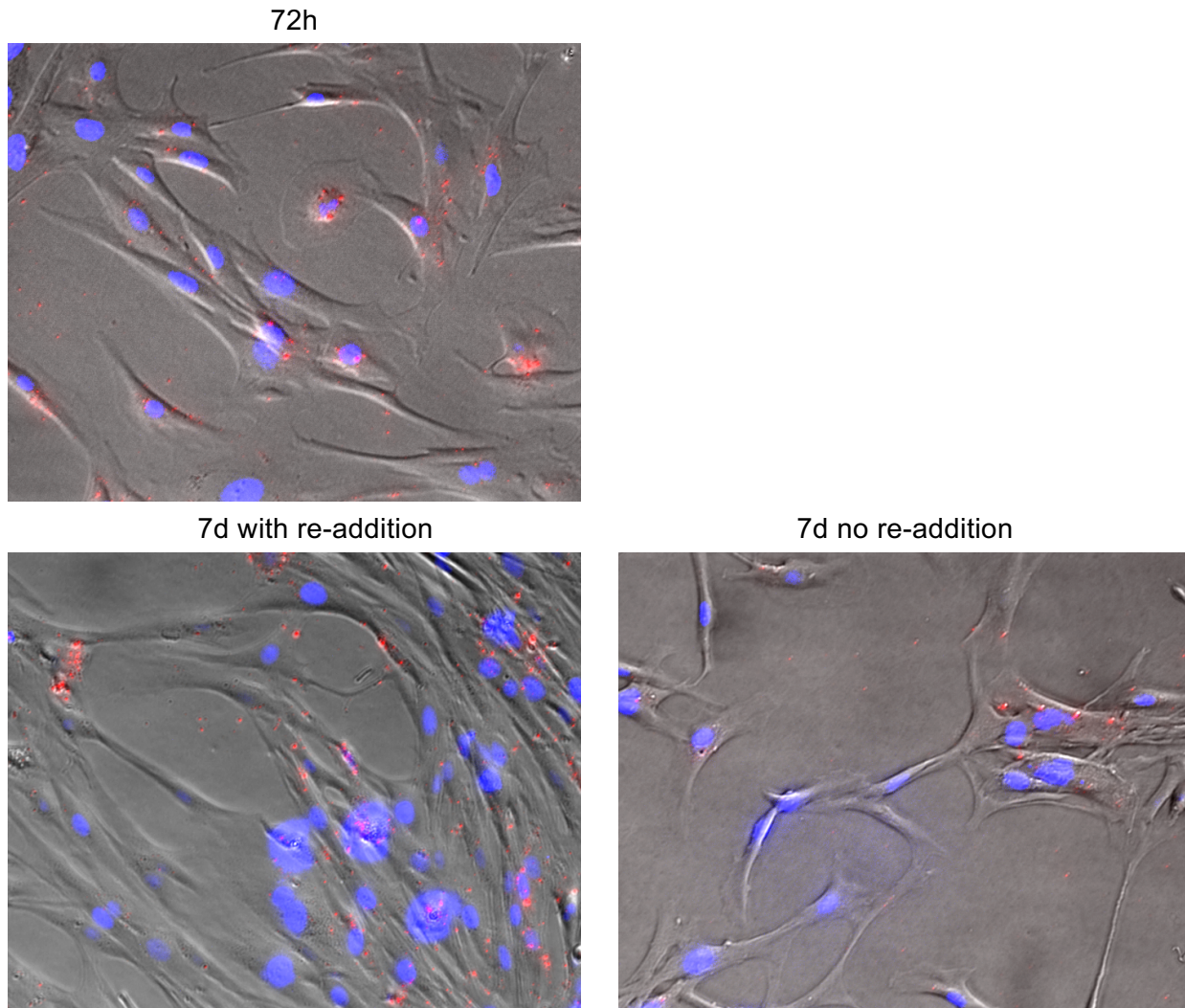


**Figure S1. Total protein blot used for normalization.** The membrane containing samples from both control, nonsense siRNA and miR-transfected cells were blocked and then incubated in anti-salmon collagen type I, and then total protein visualized using SYPRO ruby. Only protein below 100kda with bands that were fully intact on the membrane were used for normalization. The Large blotch at 75 kDa in lane 1 is due to over exposure of ladder band



**Figure S2. 72h and 7d fluorescent siRNA transfection images.** 72h image was taken before re-addition of fluorescent siRNA. Cells that did not have fluorescent siRNA re-added still maintained some evidence of siRNA in cells, but this signal was weaker and less dense than in cells that had been re-transfected.