

Movie 1. Movie showing the reeling behaviour in *Verrucosa arenata*.

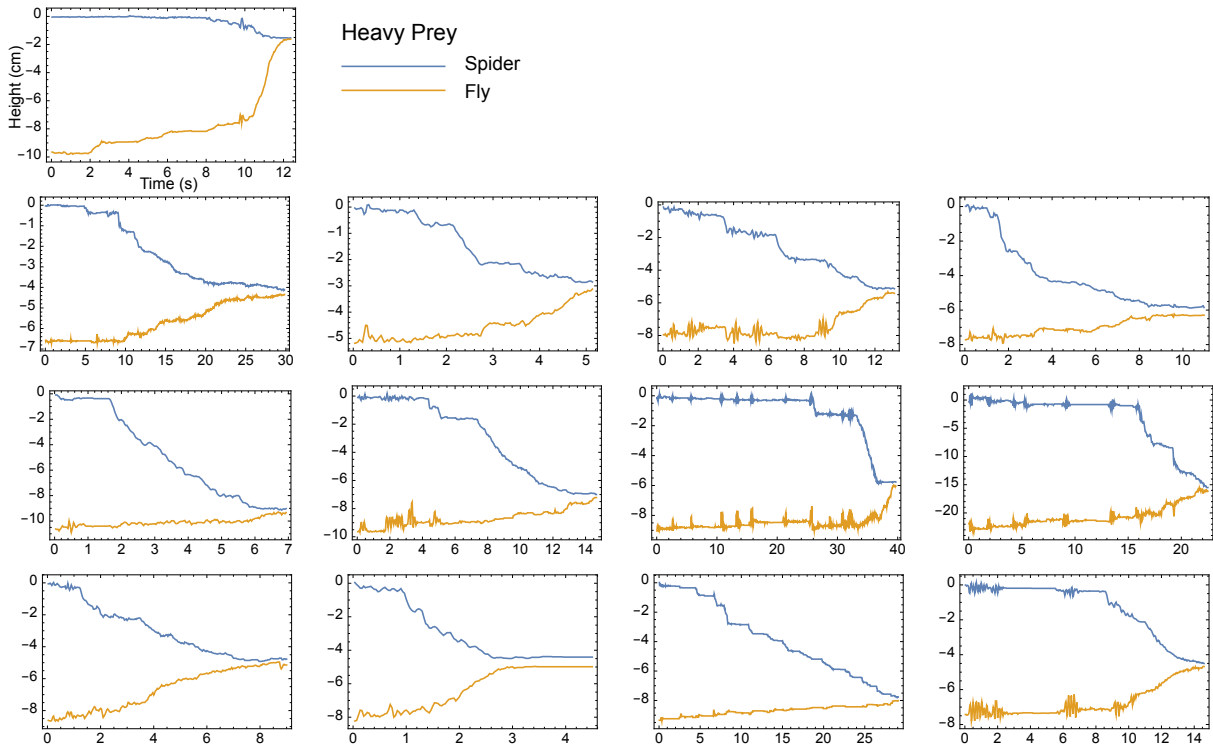


Figure S1: All trajectories of *V. arenata* spiders (blue line) as they approached Heavy prey (*A. ludens*; yellow line), shown here as a time series plot. The Y axis represents the vertical component of positions of the spider and fly (i.e., height in the web), and the X axis is the time taken (in seconds) for the spider to make contact with the fly.

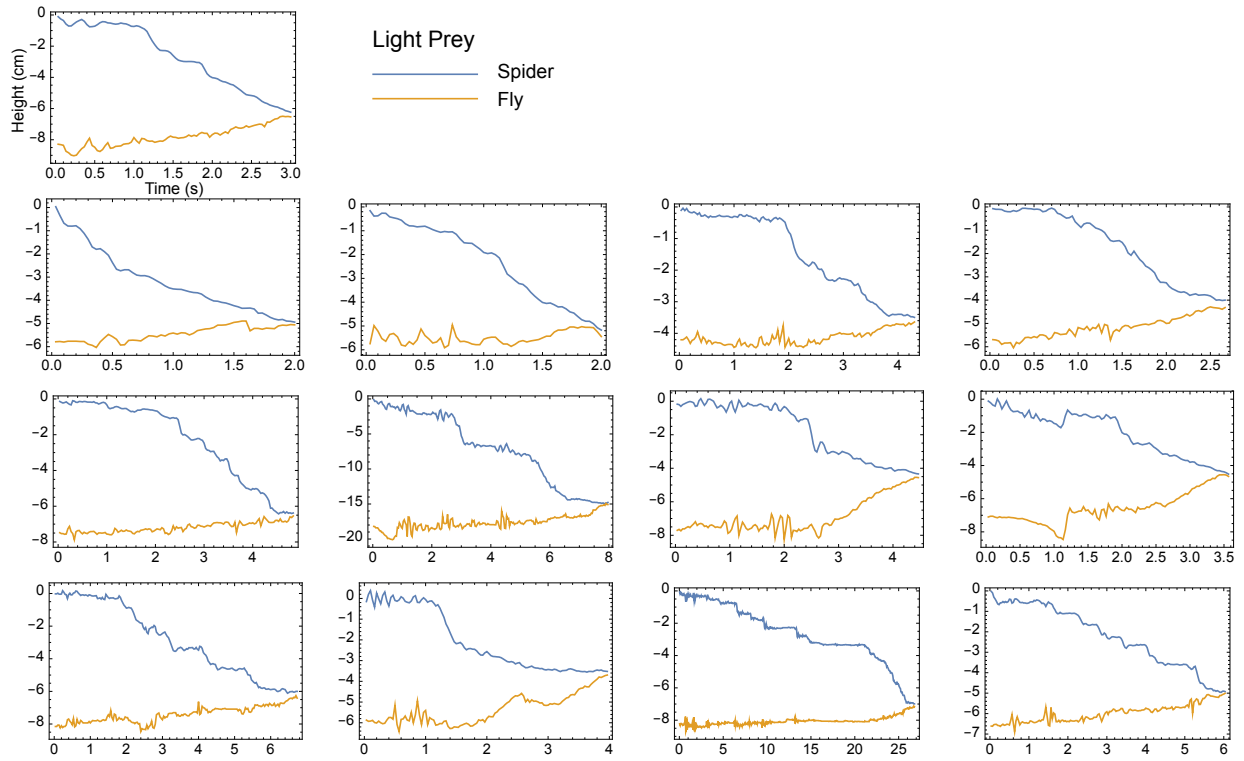


Figure S2: All trajectories of *V. arenata* spiders (blue line) as they approached Light prey (*A. ludens*; yellow line)), shown here as a time series plot. The Y axis represents the vertical component of positions of the spider and fly (i.e., height in the web), and the X axis is the time taken (in seconds) for the spider to make contact with the fly.